

CK7 Monoclonal Antibody(12D7)

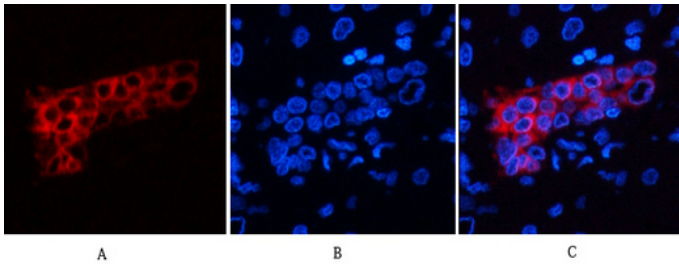
Catalog_no :	AM3054
Applications :	IF,WB,IHC-p,IP
Reactivity :	Human,Mouse,Rat
Category :	抗原抗体
Size :	100µg/50µg
Gene_name :	KRT7
Protein_name :	Keratin type II cytoskeletal 7
Humangene_id :	3855
Humanswissprot_no :	P08729
Mousegene_id :	110310
Mouseswissprot_no :	Q9DCV7
Ratgene_id :	300242
Ratswissprot_no :	Q6IG12
Immunogen :	Synthetic Peptide of CK7
Specificity :	The antibody detects endogenous CK7 proteins.
Formulation :	PBS, pH 7.4, containing 0.02% sodium azide as Preservative and 50% Glycerol.
Source :	Mouse
Dilution :	IF: 1:50-200 WB: 1:1000-2000 IHC: 1:200 IP:1:200
Purification :	The antibody was affinity-purified from mouse ascites by affinity-chromatography using specific immunogen.
Storage_stability :	-20°C/1 year
Msd_s :	MSDS_Antibody.pdf
Other_name :	KRT7; SCL; Keratin, type II cytoskeletal 7; Cytokeratin-7; CK-7; Keratin-7; K7; Sarcolectin; Type-II keratin Kb7



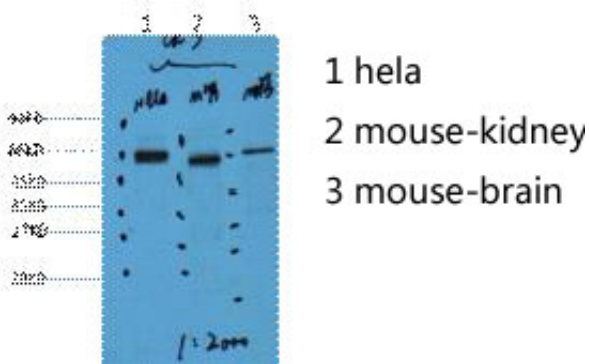
Molecular
Weight :

54KD

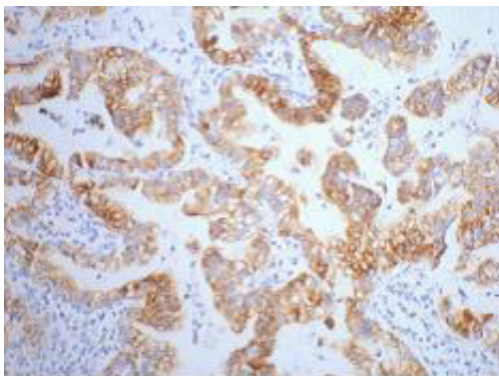
Product Images



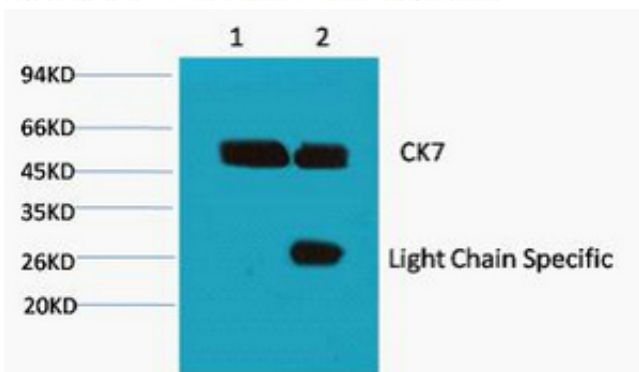
Immunofluorescence analysis of human-liver tissue. 1,CK7 Monoclonal Antibody(12D7)(red) was diluted at 1:200(4°C,overnight). 2, Cy3 labeled Secondary antibody was diluted at 1:300(room temperature, 50min).3, Picture B: DAPI(blue) 10min. Picture A:Target. Picture B: DAPI. Picture C: merge of A+B



Western blot analysis of 1) HeLa, 2) Mouse Kidney, 3) Mouse Brain, diluted at 1:2000.



IHC staining of human lung cancer tissue, diluted at 1:200.



1) Input: HeLa Cell Lysate 2) IP product: IP dilute 1:200