



CK8 Monoclonal Antibody(8G8)

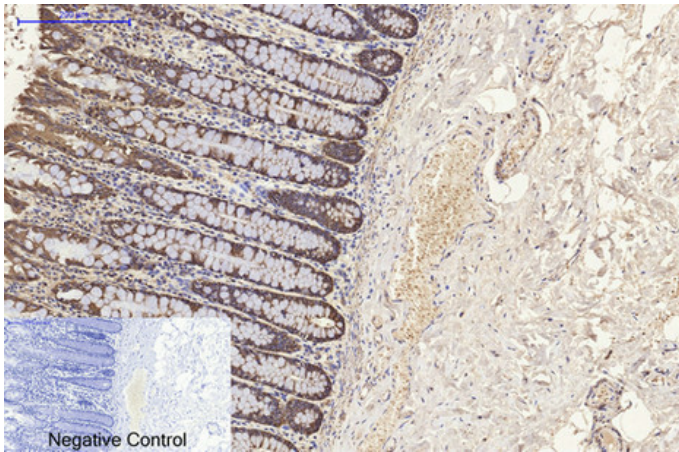
Catalog_no :	AM3055
Applications :	IF,WB,IHC-p
Reactivity :	Human,Mouse,Rat
Category :	抗原抗体
Size :	100µg/50µg
Gene_name :	KRT8
Protein_name :	Keratin type II cytoskeletal 8
Humangene_id :	3856
Humanswissprot_no :	P05787
Mousegene_id :	16691
Mouseswissprot_no :	P11679
Ratgene_id :	25626
Ratswissprot_no :	Q10758
Immunogen :	Synthetic Peptide of CK8
Specificity :	The antibody detects endogenous CK8 proteins.
Formulation :	PBS, pH 7.4, containing 0.02% sodium azide as Preservative and 50% Glycerol.
Source :	Mouse
Dilution :	IF: 1:50-200 WB: 1:2000-5000 IHC: 1:200
Purification :	The antibody was affinity-purified from mouse ascites by affinity-chromatography using specific immunogen.
Storage_stability :	-20°C/1 year
Msds :	MSDS_Antibody.pdf
Other_name :	KRT8; CYK8; Keratin, type II cytoskeletal 8; Cytokeratin-8; CK-8; Keratin-8; K8; Type-II keratin Kb8



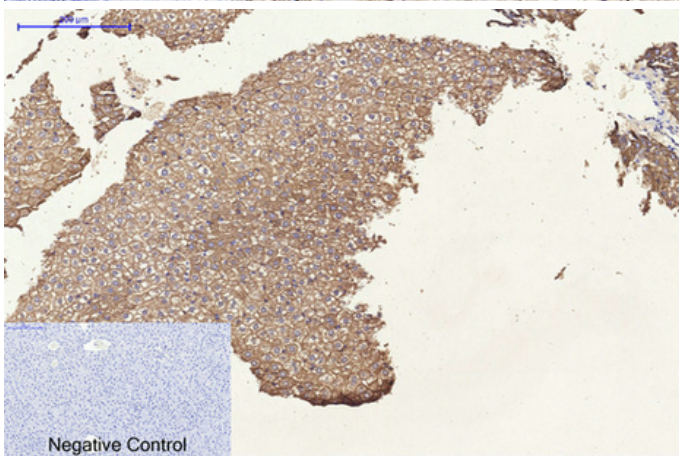
Molecular
Weight :

54KD

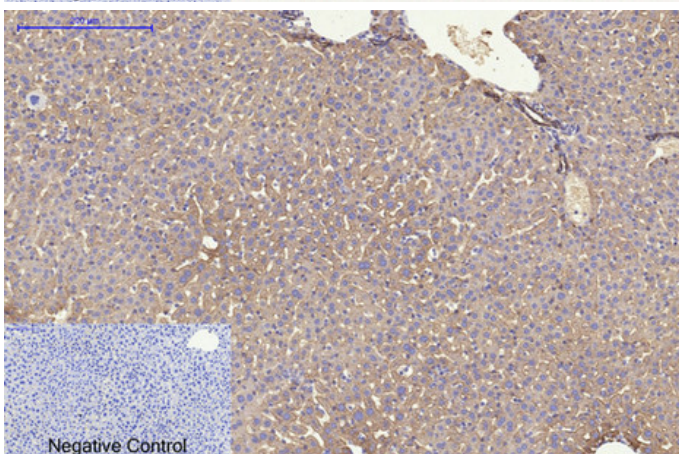
Product Images



Immunohistochemical analysis of paraffin-embedded Human-colon tissue. 1,CK8 Monoclonal Antibody(8G8) was diluted at 1:200(4°C,overnight). 2, Sodium citrate pH 6.0 was used for antibody retrieval(>98°C,20min). 3,Secondary antibody was diluted at 1:200(room temperature, 30min). Negative control was used by secondary antibody only.

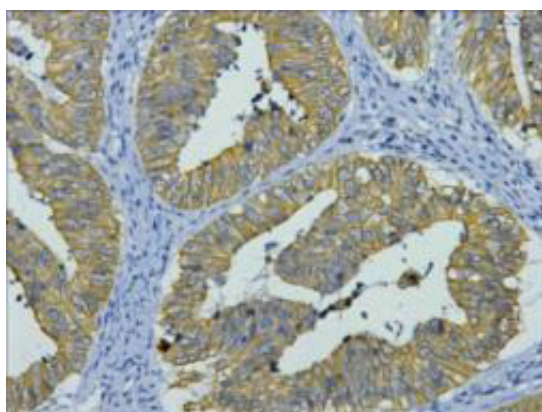
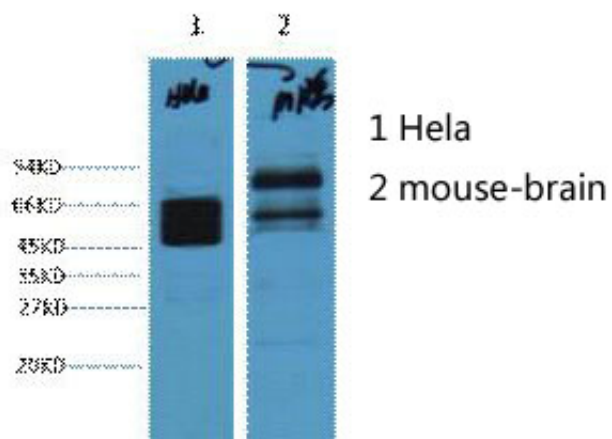


Immunohistochemical analysis of paraffin-embedded Rat-liver tissue. 1,CK8 Monoclonal Antibody(8G8) was diluted at 1:200(4°C,overnight). 2, Sodium citrate pH 6.0 was used for antibody retrieval(>98°C,20min). 3,Secondary antibody was diluted at 1:200(room temperature, 30min). Negative control was used by secondary antibody only.



Immunohistochemical analysis of paraffin-embedded Mouse-liver tissue. 1,CK8 Monoclonal Antibody(8G8) was diluted at 1:200(4°C,overnight). 2, Sodium citrate pH 6.0 was used for antibody retrieval(>98°C,20min). 3,Secondary antibody was diluted at 1:200(room temperature, 30min). Negative control was used by secondary antibody only.

Western blot analysis of 1) Hela, 2) Mouse Brain, diluted at 1:4000.



IHC staining of human colon cancer tissue, diluted at 1:200.