



Carcinoembryonic Antigen Monoclonal Antibody(10E1)

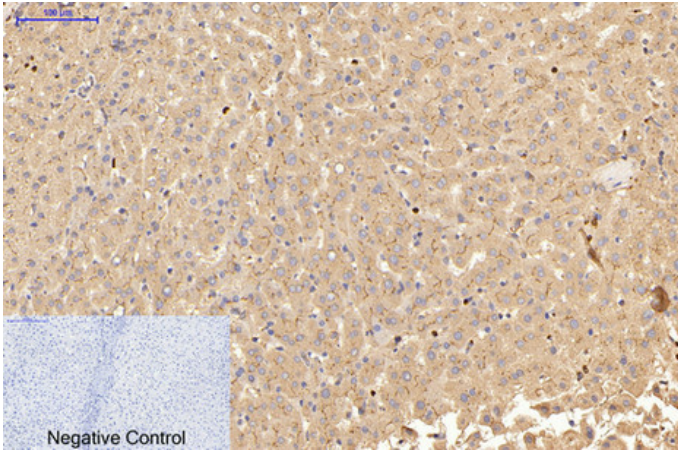
Catalog_no :	AM3061
Applications :	IHC-P,IF
Reactivity :	Human
Category :	抗原抗体
Size :	100µg/50µg
Gene_name :	CEACAM5
Protein_name :	Carcinoembryonic antigen-related cell adhesion molecule 5
Humangene_id :	1048
Humanswissprot_no :	P06731
Mousegene_id :	73250
Mouseswissprot_no :	Q3UUK2
Ratswissprot_no :	
Immunogen :	Synthetic Peptide of Carcinoembryonic Antigen
Specificity :	The antibody detects endogenous CEA proteins.
Formulation :	PBS, pH 7.4, containing 0.02% sodium azide as Preservative and 50% Glycerol.
Source :	Mouse
Dilution :	IHC 1:200 IF 1:50-200
Purification :	The antibody was affinity-purified from mouse ascites by affinity-chromatography using specific immunogen.
Storage_stability :	-20°C/1 year
Msds :	MSDS_Antibody.pdf
Other_name :	CEACAM5; CEA; Carcinoembryonic antigen-related cell adhesion molecule 5; Carcinoembryonic antigen; CEA; Meconium antigen 100; CD66e
Molecular Weight :	113KD



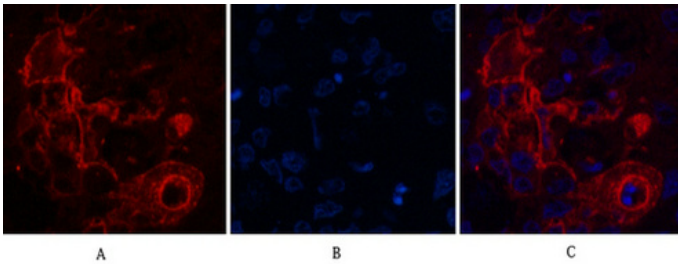
专注二抗产品

Biodragon旗下品牌

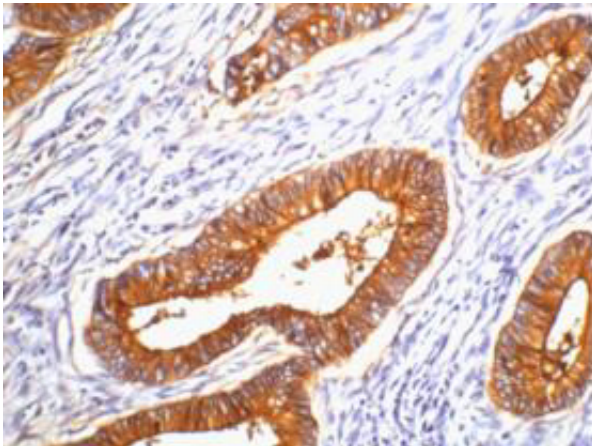
Product Images



Immunohistochemical analysis of paraffin-embedded Human-liver tissue. 1, Carcinoembryonic Antigen Monoclonal Antibody(10E1) was diluted at 1:200(4°C, overnight). 2, Sodium citrate pH 6.0 was used for antibody retrieval(>98°C, 20min). 3, Secondary antibody was diluted at 1:200(room temperature, 30min). Negative control was used by secondary antibody only.



Immunofluorescence analysis of Human-lung-cancer tissue. 1, Carcinoembryonic Antigen Monoclonal Antibody(10E1)(red) was diluted at 1:200(4°C, overnight). 2, Cy3 labeled Secondary antibody was diluted at 1:300(room temperature, 50min). 3, Picture B: DAPI(blue) 10min. Picture A: Target. Picture B: DAPI. Picture C: merge of A+B



IHC staining of human colon cancer tissue, diluted at 1:200.