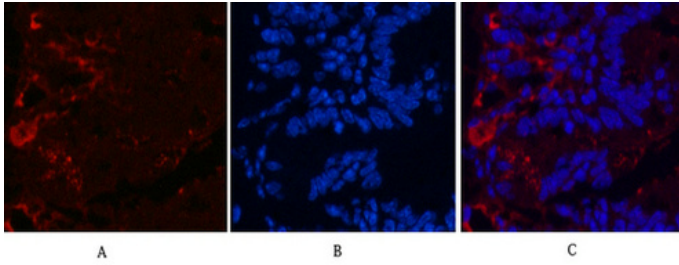




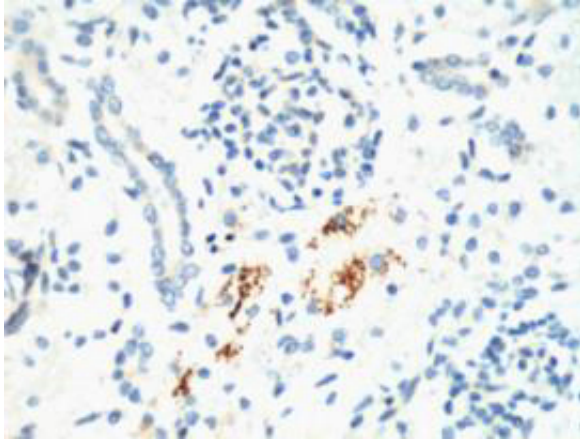
Kif 7 Monoclonal Antibody(3F8)

Catalog_no :	AM3063
Applications :	IHC-P,IF
Reactivity :	Human,Mouse,Rat
Category :	抗原抗体
Size :	100µg/50µg
Gene_name :	KIF7
Protein_name :	Kinesin-like protein KIF7
Humangene_id :	374654
Humanswissprot_no :	Q2M1P5
Mousegene_id :	16576
Mouseswissprot_no :	B7ZNG0
Ratswissprot_no :	
Immunogen :	Synthetic Peptide of Kif 7
Specificity :	The antibody detects endogenous Kif 7 proteins.
Formulation :	PBS, pH 7.4, containing 0.02% sodium azide as Preservative and 50% Glycerol.
Source :	Mouse
Dilution :	IHC 1:200 IF 1:50-200
Purification :	The antibody was affinity-purified from mouse ascites by affinity-chromatography using specific immunogen.
Storage_stability :	-20°C/1 year
Msds :	MSDS_Antibody.pdf
Other_name :	Kinesin-like protein KIF7

Product Images



Immunofluorescence analysis of Mouse-colon tissue. 1, Kif 7 Monoclonal Antibody(3F8)(red) was diluted at 1:200(4°C, overnight). 2, Cy3 labeled Secondary antibody was diluted at 1:300(room temperature, 50min). 3, Picture B: DAPI(blue) 10min. Picture A: Target. Picture B: DAPI. Picture C: merge of A+B



IHC staining of Mouse Kidney tissue, diluted at 1:200.