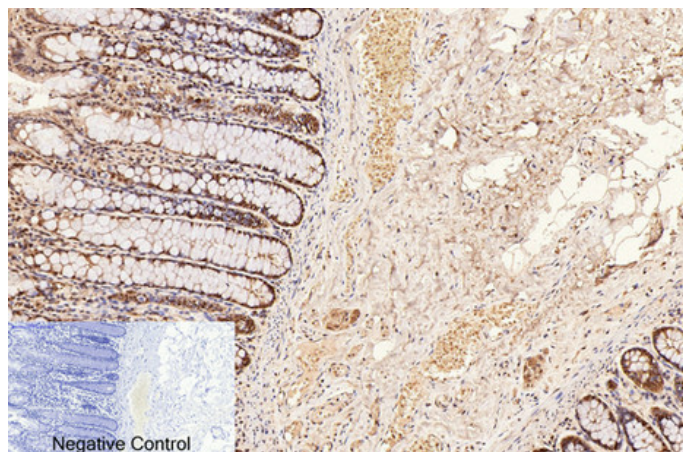




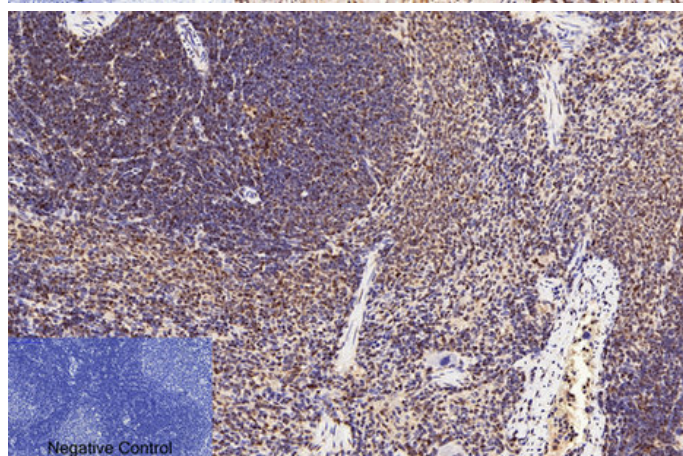
## CD2 Monoclonal Antibody(3F3)

Catalog_no :	AM3069
Applications :	IHC-p
Reactivity :	Human,Mouse,Rat
Category :	抗原抗体
Size :	100µg/50µg
Gene_name :	CD2
Protein_name :	T-cell surface antigen CD2
Humangene_id :	<a href="#">914</a>
Humanswissprot_no :	<a href="#">P06729</a>
Mousegene_id :	<a href="#">12481</a>
Mouseswissprot_no :	<a href="#">P08920</a>
Ratgene_id :	<a href="#">497761</a>
Ratswissprot_no :	<a href="#">P08921</a>
Immunogen :	Synthetic Peptide of CD2
Specificity :	The antibody detects endogenous CD2 proteins.
Formulation :	PBS, pH 7.4, containing 0.02% sodium azide as Preservative and 50% Glycerol.
Source :	Mouse
Dilution :	IHC: 1:200
Purification :	The antibody was affinity-purified from mouse ascites by affinity-chromatography using specific immunogen.
Storage_stability :	-20°C/1 year
Msds :	<a href="#">MSDS_Antibody.pdf</a>
Other_name :	CD2; SRBC; T-cell surface antigen CD2; Erythrocyte receptor; LFA-2; LFA-3 receptor; Rosette receptor; T-cell surface antigen T11/Leu-5; CD2

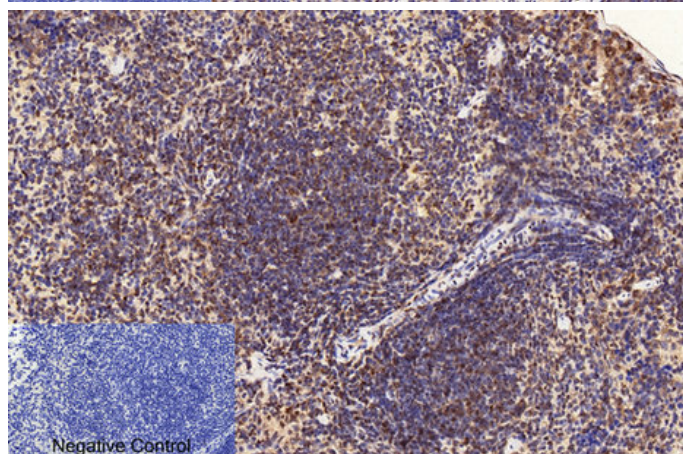
## Product Images



Immunohistochemical analysis of paraffin-embedded Human-colon tissue. 1,CD2 Monoclonal Antibody(3F3) was diluted at 1:200(4°C,overnight). 2, Sodium citrate pH 6.0 was used for antibody retrieval(>98°C,20min). 3,Secondary antibody was diluted at 1:200(room tempeRature, 30min). Negative control was used by secondary antibody only.



Immunohistochemical analysis of paraffin-embedded Rat-spleen tissue. 1,CD2 Monoclonal Antibody(3F3) was diluted at 1:200(4°C,overnight). 2, Sodium citrate pH 6.0 was used for antibody retrieval(>98°C,20min). 3,Secondary antibody was diluted at 1:200(room tempeRature, 30min). Negative control was used by secondary antibody only.



Immunohistochemical analysis of paraffin-embedded Mouse-spleen tissue. 1,CD2 Monoclonal Antibody(3F3) was diluted at 1:200(4°C,overnight). 2, Sodium citrate pH 6.0 was used for antibody retrieval(>98°C,20min). 3,Secondary antibody was diluted at 1:200(room tempeRature, 30min). Negative control was used by secondary antibody only.

Immunohistochemical analysis of paraffin-embedded Human Tonsil Carcinoma using CD2 Mouse mAb diluted at 1:500.

