



CD10 Monoclonal Antibody(5B8)

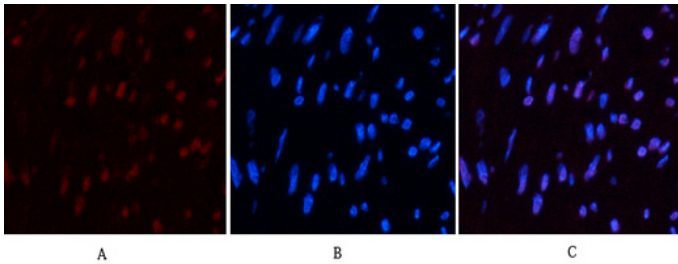
Catalog_no :	<u>AM3072</u>
Applications :	<u>IF,IHC-p</u>
Reactivity :	<u>Human,Mouse,Rat</u>
Category :	<u>抗原抗体</u>
Size :	<u>100µg/50µg</u>
Gene_name :	<u>MME</u>
Protein_name :	<u>Neprilysin</u>
Humangene_id	<u>4311</u>
:	
Humanswissprot	<u>P08473</u>
_no :	
Mousegene_id :	<u>17380</u>
Mouseswissprot	<u>Q61391</u>
_no :	
Ratgene_id :	<u>24590</u>
Ratswissprot_no	<u>P07861</u>
:	
Immunogen :	<u>Synthetic Peptide of CD10</u>
Specificity :	<u>The antibody detects endogenous CD10 proteins.</u>
Formulation :	<u>PBS, pH 7.4, containing 0.02% sodium azide as Preservative and 50% Glycerol.</u>
Source :	<u>Mouse</u>
Dilution :	<u>IF: 1:50-200 IHC: 1:200</u>
Purification :	<u>The antibody was affinity-purified from mouse ascites by affinity-chromatography using specific immunogen.</u>
Storage_stability	<u>-20°C/1 year</u>
:	
Msds :	<u>MSDS_Antibody.pdf</u>
Other_name :	<u>MME; EPN; Neprilysin; Atriopeptidase; Common acute lymphocytic leukemia antigen; CALLA; Enkephalinase; Neutral endopeptidase 24.11; NEP; Neutral endopeptidase; Skin fibroblast elastase; SFE; CD10</u>



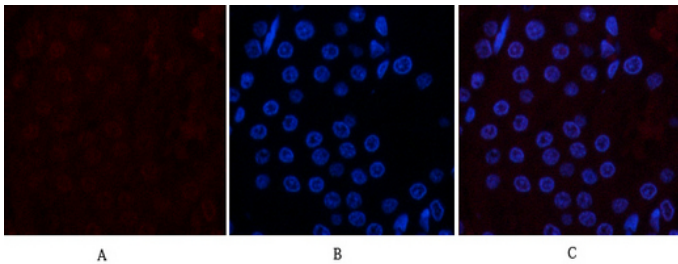
专注二抗产品

Biodragon旗下品牌

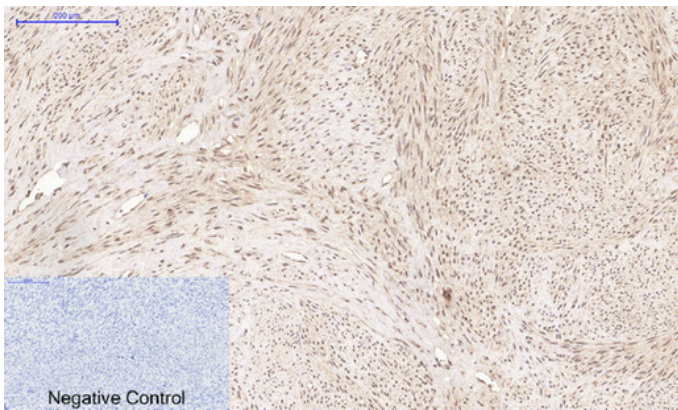
Product Images



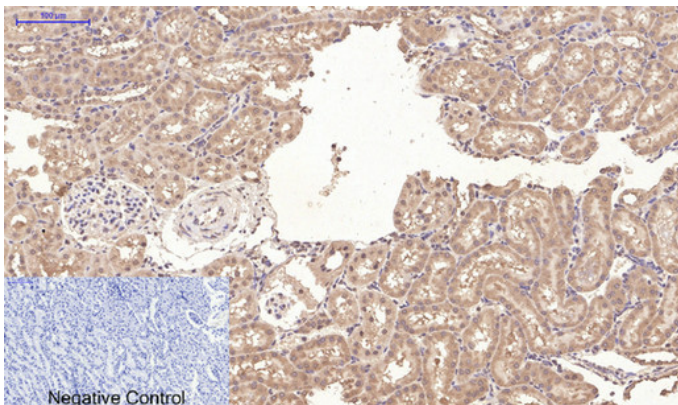
Immunofluorescence analysis of human-uterus tissue. 1,CD10 Monoclonal Antibody(5B8)(red) was diluted at 1:200(4°C,overnight). 2, Cy3 labeled Secondary antibody was diluted at 1:300(room temperature, 50min).3, Picture B: DAPI(blue) 10min. Picture A:Target. Picture B: DAPI. Picture C: merge of A+B



Immunofluorescence analysis of rat-kidney tissue. 1,CD10 Monoclonal Antibody(5B8)(red) was diluted at 1:200(4°C,overnight). 2, Cy3 labeled Secondary antibody was diluted at 1:300(room temperature, 50min).3, Picture B: DAPI(blue) 10min. Picture A:Target. Picture B: DAPI. Picture C: merge of A+B

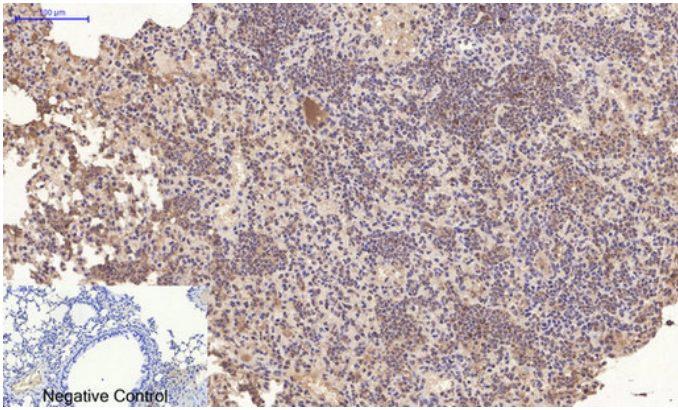


Immunohistochemical analysis of paraffin-embedded Human-uterus tissue. 1,CD10 Monoclonal Antibody(5B8) was diluted at 1:200(4°C,overnight). 2, Sodium citrate pH 6.0 was used for antibody retrieval(>98°C,20min). 3,Secondary antibody was diluted at 1:200(room temperature, 30min). Negative control was used by secondary antibody only.



Immunohistochemical analysis of paraffin-embedded Rat-kidney tissue. 1,CD10 Monoclonal Antibody(5B8) was diluted at 1:200(4°C,overnight). 2, Sodium citrate pH 6.0 was used for antibody retrieval(>98°C,20min). 3,Secondary antibody was diluted at 1:200(room temperature, 30min). Negative control was used by secondary antibody only.

Immunohistochemical analysis of paraffin-embedded Mouse-lung tissue. 1,CD10 Monoclonal Antibody(5B8) was diluted at 1:200(4°C,overnight). 2, Sodium citrate pH 6.0 was used for antibody retrieval(>98°C,20min). 3,Secondary antibody was diluted at 1:200(room temperature, 30min). Negative control was used by secondary antibody only.



Immunohistochemical analysis of paraffin-embedded human breast cancer using antibody diluted at 1:50.

