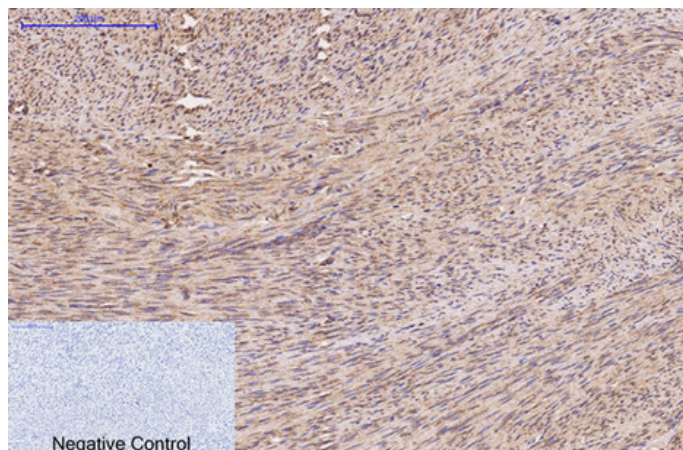




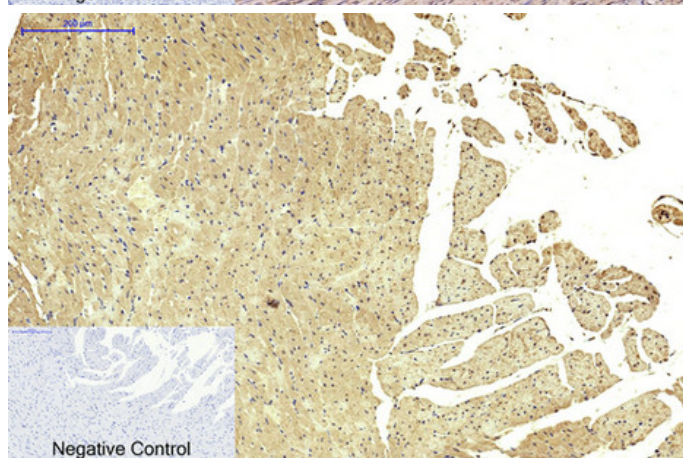
FH Monoclonal Antibody(7F1)

Catalog_no :	AM3073
Applications :	WB,IHC-p,IF
Reactivity :	Human,Mouse,Rat
Category :	抗原抗体
Size :	100µg/50µg
Gene_name :	FH
Protein_name :	Fumarate hydratase, mitochondrial
Humangene_id :	2271
Humanswissprot_no :	P07954
Mousegene_id :	14194
Mouseswissprot_no :	P97807
Ratswissprot_no :	P14408
Immunogen :	Synthetic Peptide of FH
Specificity :	The antibody detects endogenous FH proteins.
Formulation :	PBS, pH 7.4, containing 0.02% sodium azide as Preservative and 50% Glycerol.
Source :	Mouse
Dilution :	WB: 1:3000 IF 1:200 IHC 1:50-300
Purification :	The antibody was affinity-purified from mouse ascites by affinity-chromatography using specific immunogen.
Storage_stability :	-20°C/1 year
Msds :	MSDS_Antibody.pdf
Other_name :	Fumarate hydratase, mitochondrial (Fumarase) (EC 4.2.1.2)
Molecular Weight :	50KD

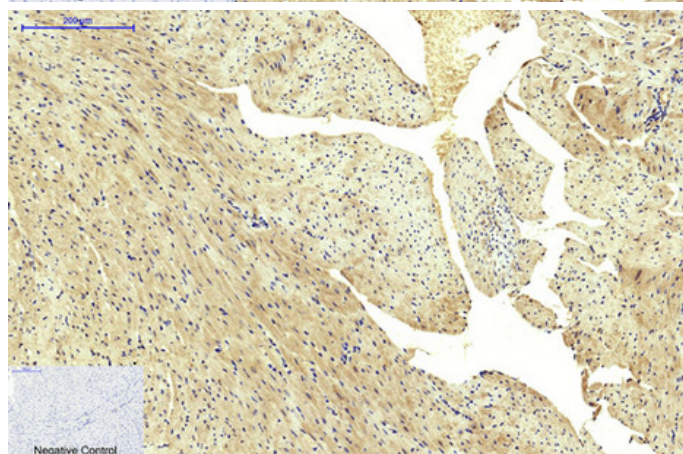
Product Images



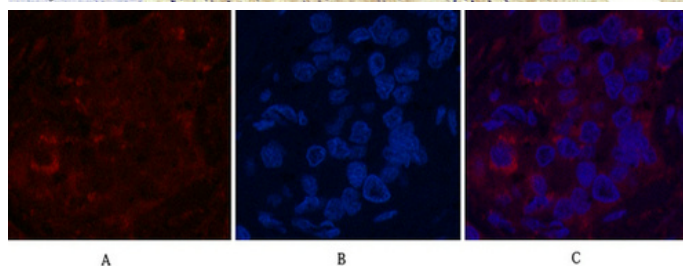
Immunohistochemical analysis of paraffin-embedded Human-uterus tissue. 1, FH Monoclonal Antibody(7F1) was diluted at 1:200(4°C, overnight). 2, Sodium citrate pH 6.0 was used for antibody retrieval(>98°C, 20min). 3, Secondary antibody was diluted at 1:200(room temperature, 30min). Negative control was used by secondary antibody only.



Immunohistochemical analysis of paraffin-embedded Rat-heart tissue. 1, FH Monoclonal Antibody(7F1) was diluted at 1:200(4°C, overnight). 2, Sodium citrate pH 6.0 was used for antibody retrieval(>98°C, 20min). 3, Secondary antibody was diluted at 1:200(room temperature, 30min). Negative control was used by secondary antibody only.

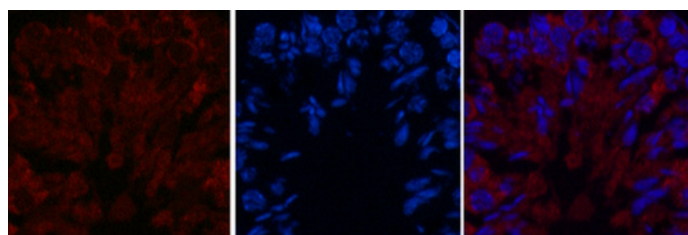


Immunohistochemical analysis of paraffin-embedded Mouse-heart tissue. 1, FH Monoclonal Antibody(7F1) was diluted at 1:200(4°C, overnight). 2, Sodium citrate pH 6.0 was used for antibody retrieval(>98°C, 20min). 3, Secondary antibody was diluted at 1:200(room temperature, 30min). Negative control was used by secondary antibody only.



Immunofluorescence analysis of Human-liver-cancer tissue. 1, FH Monoclonal Antibody(7F1)(red) was diluted at 1:200(4°C, overnight). 2, Cy3 labeled Secondary antibody was diluted at 1:300(room temperature, 50min). 3, Picture B: DAPI(blue) 10min. Picture A: Target. Picture B: DAPI. Picture C: merge of A+B

Immunofluorescence analysis of Mouse-testis tissue. 1, FH Monoclonal Antibody(7F1)(red) was diluted at 1:200(4°C, overnight). 2, Cy3 labeled Secondary antibody

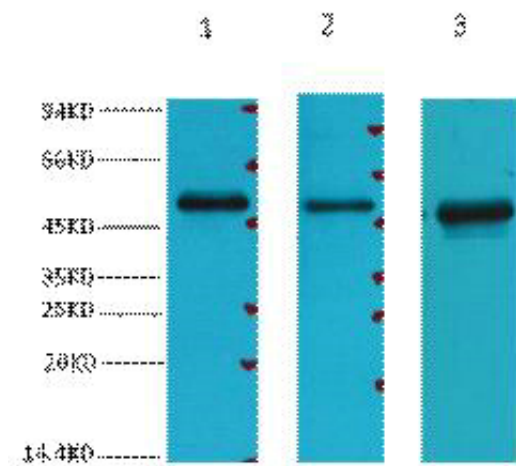


A

B

C

was diluted at 1:300(room temperature, 50min).3,
Picture B: DAPI(blue) 10min. Picture A:Target. Picture B:
DAPI. Picture C: merge of A+B



Western blot analysis of 1) 293T, 2) HepG2, 3) HeLa,
diluted at 1:3000.