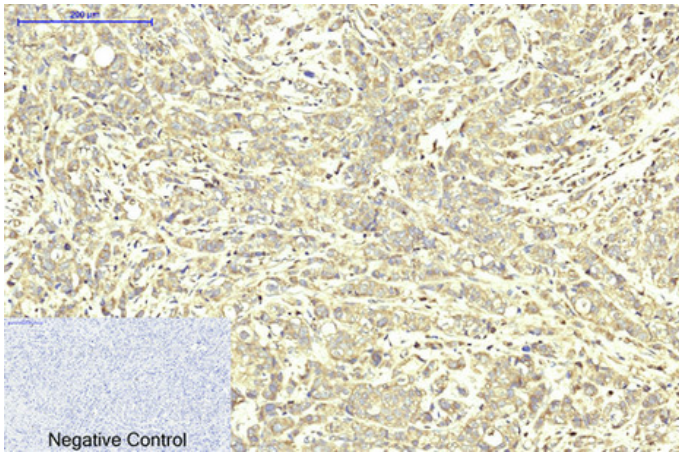




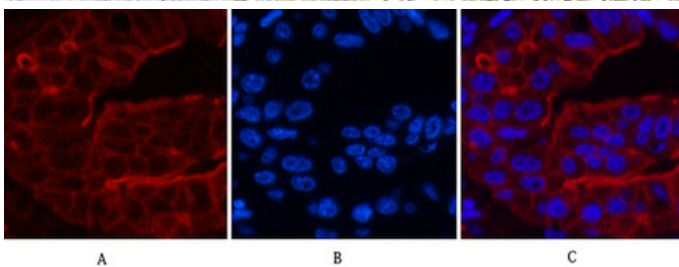
ABCB5 Monoclonal Antibody(11A2)

Catalog_no :	AM3074
Applications :	WB,IHC-p,IF,
Reactivity :	Human
Category :	抗原抗体
Size :	100µg/50µg
Gene_name :	ABCB5
Protein_name :	ATP-binding cassette sub-family B member 5
Humangene_id :	340273
Humanswissprot_no :	Q2M3G0
Immunogen :	Synthetic Peptide of ABCB5
Specificity :	The antibody detects endogenous ABCB5 proteins.
Formulation :	PBS, pH 7.4, containing 0.02% sodium azide as Preservative and 50% Glycerol.
Source :	Mouse
Dilution :	WB: 1:2000 IF 1:200 IHC 1:50-300
Purification :	The antibody was affinity-purified from mouse ascites by affinity-chromatography using specific immunogen.
Storage_stability :	-20°C/1 year
Msds :	MSDS_Antibody.pdf
Other_name :	ABCB5; ATP-binding cassette sub-family B member 5; ABCB5 P-gp; P-glycoprotein ABCB5
Molecular Weight :	90KD

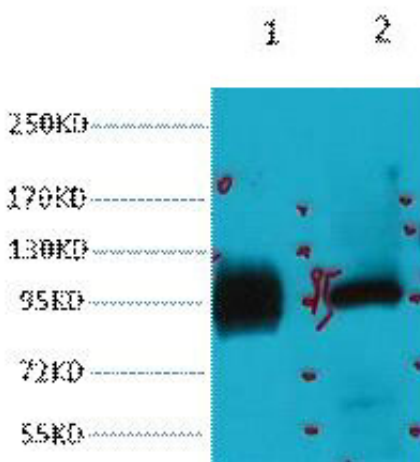
Product Images



Immunohistochemical analysis of paraffin-embedded Human-breast-cancer tissue. 1, ABCB5 Monoclonal Antibody(11A2) was diluted at 1:200(4°C, overnight). 2, Sodium citrate pH 6.0 was used for antibody retrieval(>98°C, 20min). 3, Secondary antibody was diluted at 1:200(room temperature, 30min). Negative control was used by secondary antibody only.



Immunofluorescence analysis of Human-liver-cancer tissue. 1, ABCB5 Monoclonal Antibody(11A2)(red) was diluted at 1:200(4°C, overnight). 2, Cy3 labeled Secondary antibody was diluted at 1:300(room temperature, 50min). 3, Picture B: DAPI(blue) 10min. Picture A: Target. Picture B: DAPI. Picture C: merge of A+B



Western blot analysis of 1) HeLa, 2) 293T, diluted at 1:2000. cells nucleus extracted by Minute TM Cytoplasmic and Nuclear Fractionation kit (SC-003, Invent biotech, MN, USA).