

## CK17 Monoclonal Antibody(10A1)

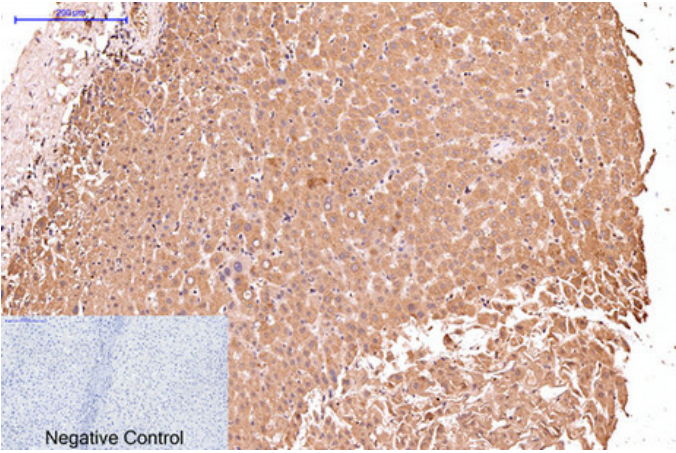
Catalog_no :	AM3081
Applications :	WB,IHC-p,IF,IP
Reactivity :	Human
Category :	抗原抗体
Size :	100µg/50µg
Gene_name :	KRT17
Protein_name :	Keratin type I cytoskeletal 17
Humangene_id :	<a href="#">3872</a>
Humanswissprot_no :	<a href="#">Q04695</a>
Mousegene_id :	<a href="#">16667</a>
Mouseswissprot_no :	<a href="#">Q9QWL7</a>
Ratgene_id :	<a href="#">287702</a>
Ratswissprot_no :	<a href="#">Q6IFU8</a>
Immunogen :	Synthetic Peptide of CK17
Specificity :	The antibody detects CK17 endogenous proteins.
Formulation :	PBS, pH 7.4, containing 0.02% sodium azide as Preservative and 50% Glycerol.
Source :	Mouse
Dilution :	WB: 1:1000 IP:1:200 IF 1:200 IHC 1:50-300
Purification :	The antibody was affinity-purified from mouse ascites by affinity-chromatography using specific immunogen.
Storage_stability :	-20°C/1 year
Msds :	<a href="#">MSDS_Antibody.pdf</a>
Other_name :	KRT17; Keratin, type I cytoskeletal 17; 39.1; Cytokeratin-17; CK-17; Keratin-17; K17
Molecular	48KD



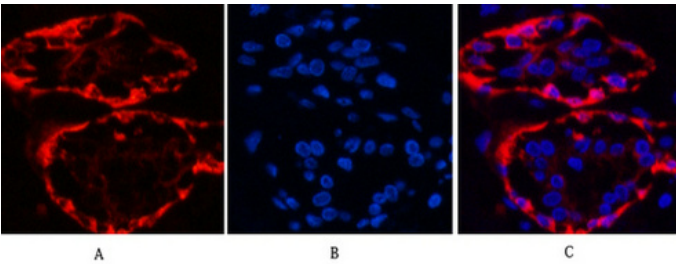
Weight :

---

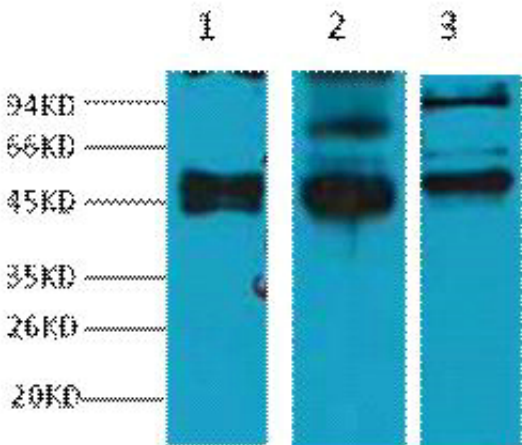
Product Images



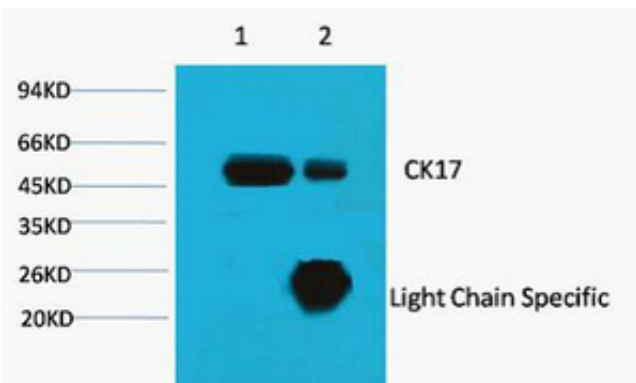
Immunohistochemical analysis of paraffin-embedded Human-liver tissue. 1,CK17 Monoclonal Antibody(10A1) was diluted at 1:200(4°C,overnight). 2, Sodium citrate pH 6.0 was used for antibody retrieval(>98°C,20min). 3,Secondary antibody was diluted at 1:200(room temperature, 30min). Negative control was used by secondary antibody only.



Immunofluorescence analysis of Human-breast tissue. 1,CK17 Monoclonal Antibody(10A1)(red) was diluted at 1:200(4°C,overnight). 2, Cy3 labeled Secondary antibody was diluted at 1:300(room temperature, 50min).3, Picture B: DAPI(blue) 10min. Picture A:Target. Picture B: DAPI. Picture C: merge of A+B



Western blot analysis of 1) HeLa, 2) MCF7, 3) 293T, diluted at 1:2000.



1) Input: HeLa Cell Lysate 2) IP product: IP dilute 1:200