



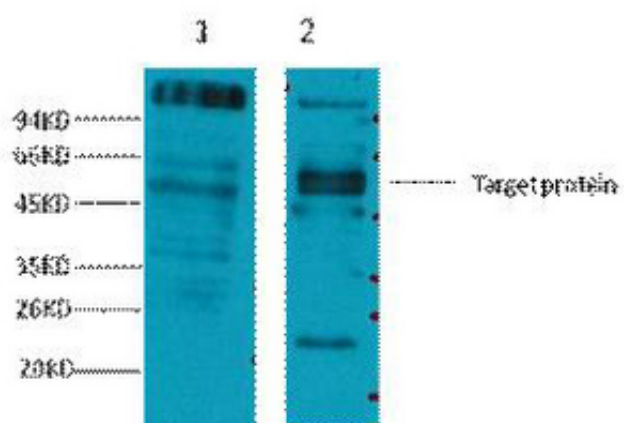
CD23 Monoclonal Antibody(10H2)

Catalog_no :	AM3082
Applications :	WB
Reactivity :	Human,Mouse,Rat
Category :	抗原抗体
Size :	100µg/50µg
Gene_name :	FCER2
Protein_name :	Low affinity immunoglobulin epsilon Fc receptor
Humangene_id :	2208
Humanswissprot_no :	P06734
Mousegene_id :	14128
Mouseswissprot_no :	P20693
Ratswissprot_no :	
Immunogen :	Synthetic Peptide of CD23
Specificity :	The antibody detects endogenous CD23 proteins.
Formulation :	PBS, pH 7.4, containing 0.02% sodium azide as Preservative and 50% Glycerol.
Source :	Mouse
Dilution :	WB: 1:1000
Purification :	The antibody was affinity-purified from mouse ascites by affinity-chromatography using specific immunogen.
Storage_stability :	-20°C/1 year
Msds :	MSDS_Antibody.pdf
Other_name :	FCER2; CD23A; CLEC4J; FCE2; IGEBF; Low affinity immunoglobulin epsilon Fc receptor; BLAST-2; C-type lectin domain family 4 member J; Fc-epsilon-RII; Immunoglobulin E-binding factor; Lymphocyte IgE receptor; CD23
Molecular	36KD



Weight :

Product Images



Western blot analysis of 1) HeLa, 2) Mouse Brain tissue, diluted at 1:2000.