



## IDE Monoclonal Antibody(3H4)

Catalog_no :	<u>AM3083</u>
Applications :	<u>WB,IHC-p,IF,</u>
Reactivity :	<u>Human</u>
Category :	<u>抗原抗体</u>
Size :	<u>100µg/50µg</u>
Gene_name :	<u>IDE</u>
Protein_name :	<u>Insulin-degrading enzyme</u>
Humangene_id :	<u><a href="#">3416</a></u>
Humanswissprot_no :	<u><a href="#">P14735</a></u>
Mouseswissprot_no :	<u><a href="#">Q9JHR7</a></u>
Ratgene_id :	<u><a href="#">25700</a></u>
Ratswissprot_no :	<u><a href="#">P35559</a></u>
Immunogen :	<u>Synthetic Peptide of IDE</u>
Specificity :	<u>The antibody detects endogenous IDE proteins.</u>
Formulation :	<u>PBS, pH 7.4, containing 0.02% sodium azide as Preservative and 50% Glycerol.</u>
Source :	<u>Mouse</u>
Dilution :	<u>WB: 1:1000 IF 1:200 IHC 1:50-300</u>
Purification :	<u>The antibody was affinity-purified from mouse ascites by affinity-chromatography using specific immunogen.</u>
Storage_stability :	<u>-20°C/1 year</u>
Msds :	<u>MSDS_Antibody.pdf</u>
Other_name :	<u>IDE; Insulin-degrading enzyme; Abeta-degrading protease; Insulin protease; Insulinase; Insulysin</u>
Molecular Weight :	<u>118KD</u>

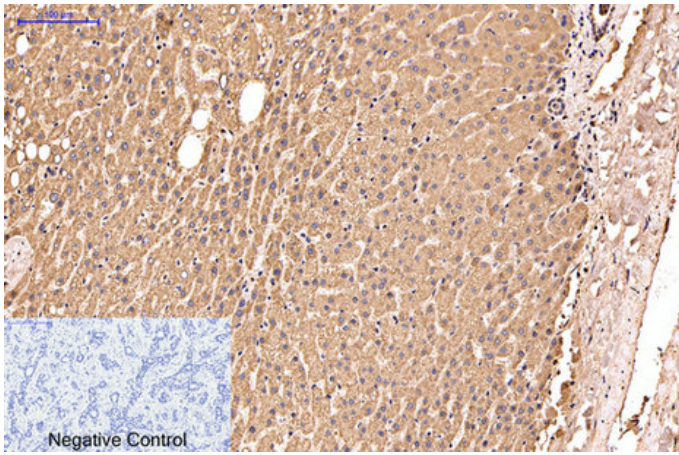


**专注二抗产品**

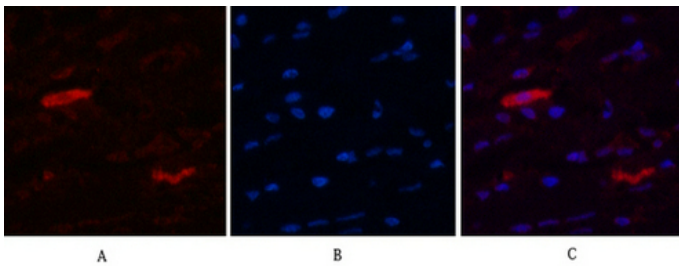
Biodragon旗下品牌

---

Product Images



Immunohistochemical analysis of paraffin-embedded Human-liver-cancer tissue. 1, IDE Monoclonal Antibody(3H4) was diluted at 1:200(4°C, overnight). 2, Sodium citrate pH 6.0 was used for antibody retrieval(>98°C, 20min). 3, Secondary antibody was diluted at 1:200(room temperature, 30min). Negative control was used by secondary antibody only.



Immunofluorescence analysis of Human-breast tissue. 1, IDE Monoclonal Antibody(3H4)(red) was diluted at 1:200(4°C, overnight). 2, Cy3 labeled Secondary antibody was diluted at 1:300(room temperature, 50min). 3, Picture B: DAPI(blue) 10min. Picture A: Target. Picture B: DAPI. Picture C: merge of A+B

Western blot analysis of 1) Hela, 2) HepG2, diluted at 1:2000

