

## alpha Lactalbumin Monoclonal Antibody(9E9)

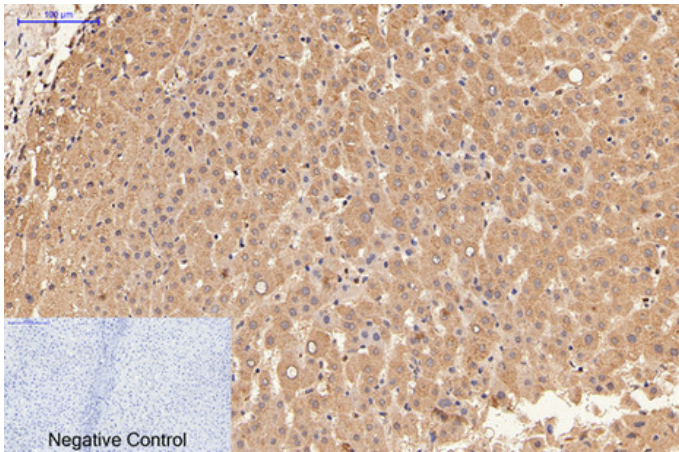
Catalog_no :	AM3084
Applications :	WB,IHC-p,IF,
Reactivity :	Human
Category :	抗原抗体
Size :	100µg/50µg
Gene_name :	LALBA
Protein_name :	Alpha-lactalbumin
Humangene_id	<a href="#">3906</a>
:	
Humanswissprot	<a href="#">P00709</a>
_no :	
Mousegene_id :	<a href="#">16770</a>
Mouseswissprot	<a href="#">P29752</a>
_no :	
Ratgene_id :	<a href="#">24528</a>
Ratswissprot_no	<a href="#">P00714</a>
:	
Immunogen :	Synthetic Peptide of alpha Lactalbumin
Specificity :	The antibody detects endogenous alpha Lactalbumin proteins.
Formulation :	PBS, pH 7.4, containing 0.02% sodium azide as Preservative and 50% Glycerol.
Source :	Mouse
Dilution :	WB: 1:1000 IF 1:200 IHC 1:50-300
Purification :	The antibody was affinity-purified from mouse ascites by affinity-chromatography using specific immunogen.
Storage_stability	-20°C/1 year
:	
Msds :	MSDS_Antibody.pdf
Other_name :	Alpha-lactalbumin (Lactose synthase B protein) (Lysozyme-like protein 7)
Molecular	16KD



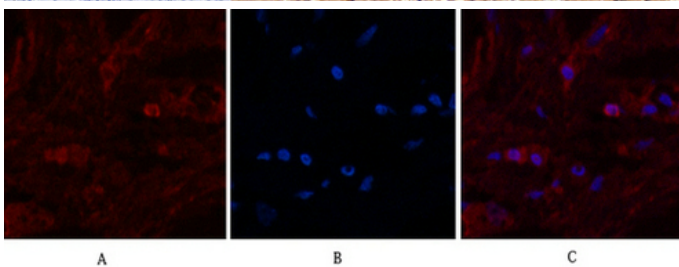
Weight :

---

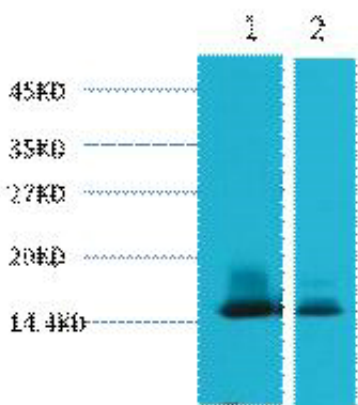
## Product Images



Immunohistochemical analysis of paraffin-embedded Human-liver tissue. 1, alpha Lactalbumin Monoclonal Antibody(9E9) was diluted at 1:200(4°C, overnight). 2, Sodium citrate pH 6.0 was used for antibody retrieval(>98°C, 20min). 3, Secondary antibody was diluted at 1:200(room temperature, 30min). Negative control was used by secondary antibody only.



Immunofluorescence analysis of Human-breast tissue. 1, alpha Lactalbumin Monoclonal Antibody(9E9)(red) was diluted at 1:200(4°C, overnight). 2, Cy3 labeled Secondary antibody was diluted at 1:300(room temperature, 50min). 3, Picture B: DAPI(blue) 10min. Picture A: Target. Picture B: DAPI. Picture C: merge of A+B



Western blot analysis of 1) Human Milk, 2) Milk, diluted at 1:3000.