



EFHD1 Monoclonal Antibody(3G2)

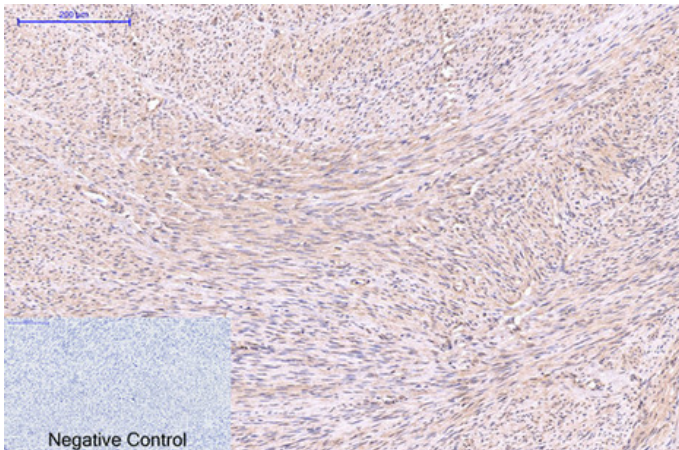
Catalog_no :	AM3085
Applications :	WB,IHC-p,IF
Reactivity :	Human,Mouse,Rat
Category :	抗原抗体
Size :	100µg/50µg
Gene_name :	EFHD1
Protein_name :	EF-hand domain-containing protein D1
Humangene_id :	80303
Humanswissprot_no :	Q9BUP0
Mousegene_id :	98363
Mouseswissprot_no :	Q9D4J1
Ratswissprot_no :	
Immunogen :	Synthetic Peptide of EFHD1
Specificity :	The antibody detects endogenous EFHD1 proteins.
Formulation :	PBS, pH 7.4, containing 0.02% sodium azide as Preservative and 50% Glycerol.
Source :	Mouse
Dilution :	WB: 1:2000 IF: 1:100-200 IHC 1:50-300
Purification :	The antibody was affinity-purified from mouse ascites by affinity-chromatography using specific immunogen.
Storage_stability :	-20°C/1 year
Msds :	MSDS_Antibody.pdf
Other_name :	EF-hand domain-containing protein D1 (EF-hand domain-containing protein 1) (Swiprosin-2)
Molecular Weight :	27KD



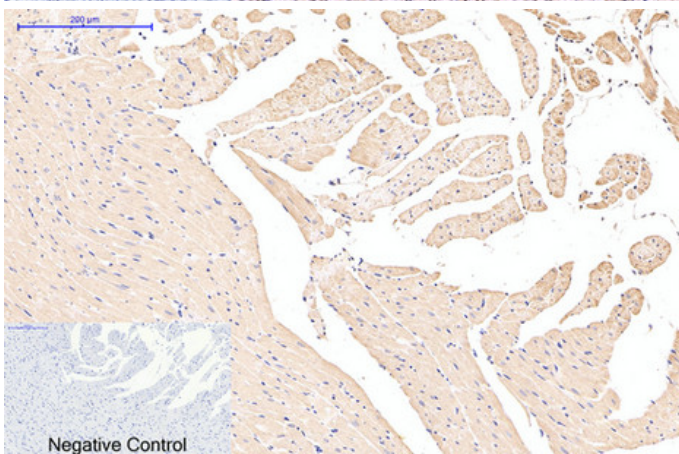
专注二抗产品

Biodragon旗下品牌

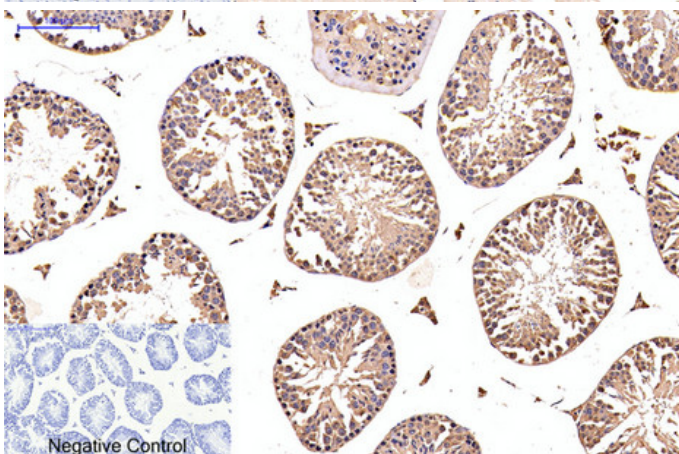
Product Images



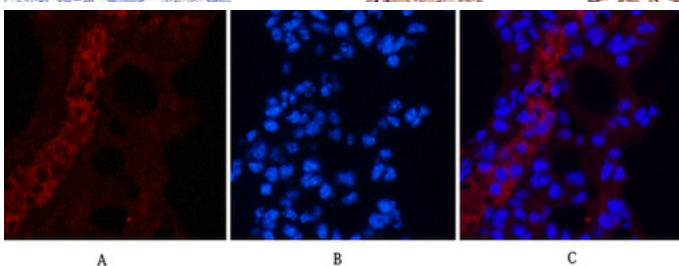
Immunohistochemical analysis of paraffin-embedded Human-uterus tissue. 1,EFHD1 Monoclonal Antibody(3G2) was diluted at 1:200(4°C,overnight). 2, Sodium citrate pH 6.0 was used for antibody retrieval(>98°C,20min). 3,Secondary antibody was diluted at 1:200(room temperature, 30min). Negative control was used by secondary antibody only.



Immunohistochemical analysis of paraffin-embedded Rat-heart tissue. 1,EFHD1 Monoclonal Antibody(3G2) was diluted at 1:200(4°C,overnight). 2, Sodium citrate pH 6.0 was used for antibody retrieval(>98°C,20min). 3,Secondary antibody was diluted at 1:200(room temperature, 30min). Negative control was used by secondary antibody only.

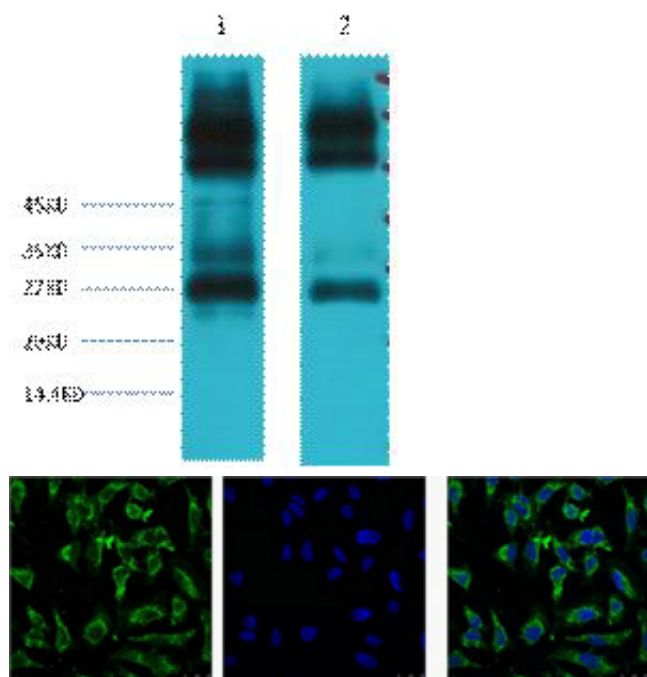


Immunohistochemical analysis of paraffin-embedded Mouse-testis tissue. 1,EFHD1 Monoclonal Antibody(3G2) was diluted at 1:200(4°C,overnight). 2, Sodium citrate pH 6.0 was used for antibody retrieval(>98°C,20min). 3,Secondary antibody was diluted at 1:200(room temperature, 30min). Negative control was used by secondary antibody only.



Immunofluorescence analysis of Mouse-lung tissue. 1,EFHD1 Monoclonal Antibody(3G2)(red) was diluted at 1:200(4°C,overnight). 2, Cy3 labeled Secondary antibody was diluted at 1:300(room temperature, 50min).3, Picture B: DAPI(blue) 10min. Picture A:Target. Picture C: DAPI. Picture C: merge of A+B

Western blot analysis of 1) Mouse spleen tissue, 2) Rat spleen tissue, diluted at 1:3000.



IF analysis of HeLa with antibody (Left) and DAPI (Right) diluted at 1:100.