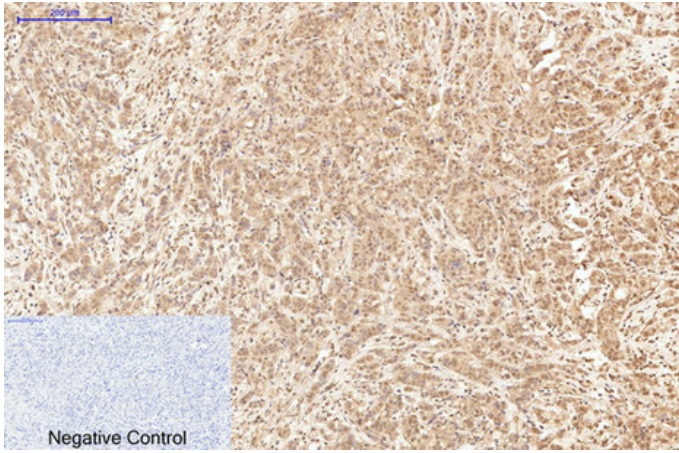




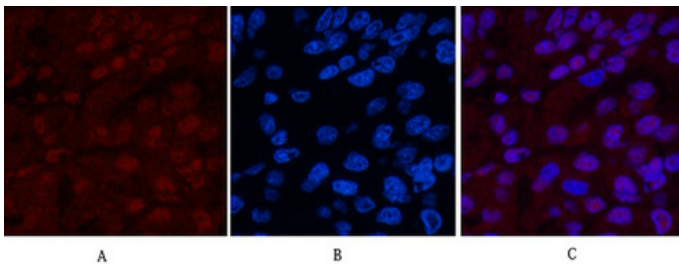
XRCC4 Monoclonal Antibody(5C10)

Catalog_no :	AM3086
Applications :	WB,IHC-p,IF,IP
Reactivity :	Human
Category :	抗原抗体
Size :	100µg/50µg
Gene_name :	XRCC4
Protein_name :	DNA repair protein XRCC4
Humangene_id :	7518
Humanswissprot_no :	Q13426
Mousegene_id :	108138
Mouseswissprot_no :	Q924T3
Ratswissprot_no :	
Immunogen :	Synthetic Peptide of XRCC4
Specificity :	The antibody detects endogenous XRCC4 proteins.
Formulation :	PBS, pH 7.4, containing 0.02% sodium azide as Preservative and 50% Glycerol.
Source :	Mouse
Dilution :	WB: 1:2000 IP:1:200 IF 1:200 IHC 1:50-300
Purification :	The antibody was affinity-purified from mouse ascites by affinity-chromatography using specific immunogen.
Storage_stability :	-20°C/1 year
Msds :	MSDS_Antibody.pdf
Other_name :	XRCC4; DNA repair protein XRCC4; X-ray repair cross-complementing protein 4
Molecular Weight :	38KD

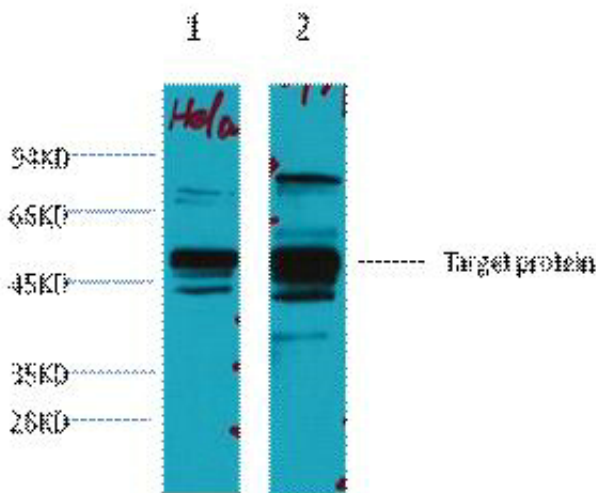
Product Images



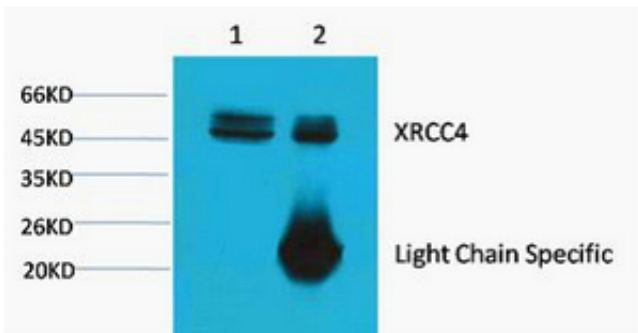
Immunohistochemical analysis of paraffin-embedded Human-breast-cancer tissue. 1,XRCC4 Monoclonal Antibody(5C10) was diluted at 1:200(4°C,overnight). 2, Sodium citrate pH 6.0 was used for antibody retrieval(>98°C,20min). 3,Secondary antibody was diluted at 1:200(room temperature, 30min). Negative control was used by secondary antibody only.



Immunofluorescence analysis of Human-liver-cancer tissue. 1,XRCC4 Monoclonal Antibody(5C10)(red) was diluted at 1:200(4°C,overnight). 2, Cy3 labeled Secondary antibody was diluted at 1:300(room temperature, 50min).3, Picture B: DAPI(blue) 10min. Picture A:Target. Picture B: DAPI. Picture C: merge of A+B



Western blot analysis of 1) HeLa, 2) 293T, diluted at 1:3000.



1) Input: HeLa Cell Lysate 2) IP product: IP dilute 1:200