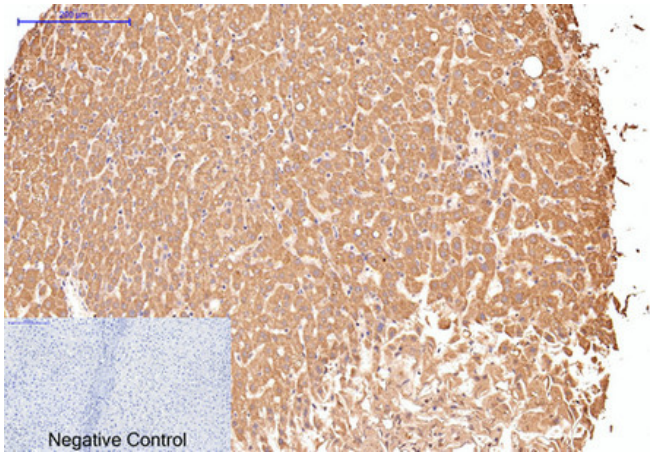




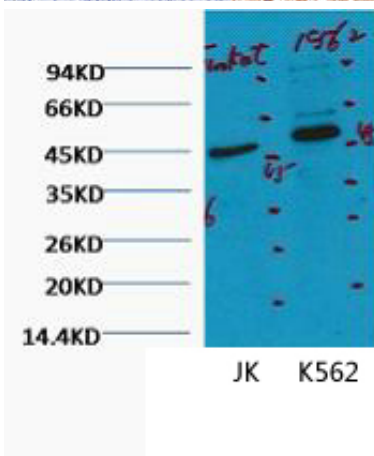
## CD16 Monoclonal Antibody(Q32)

Catalog_no :	AM3090
Applications :	WB,IHC-p,
Reactivity :	Human
Category :	抗原抗体
Size :	100µg/50µg
Gene_name :	FCGR3A/FCGR3B
Protein_name :	Low affinity immunoglobulin gamma Fc region receptor III-A/Low affinity immunoglobulin gamma Fc region receptor III-B
Humangene_id :	<a href="#">2214/2215</a>
Humanswissprot_no :	<a href="#">P08637/O75015</a>
Immunogen :	Synthetic Peptide of CD16
Specificity :	The antibody detects endogenous CD16 protein.
Formulation :	PBS, pH 7.4, containing 0.02% sodium azide as Preservative and 50% Glycerol.
Source :	Mouse
Dilution :	WB: 1:1000 IHC 1:50-300
Purification :	The antibody was affinity-purified from mouse ascites by affinity-chromatography using specific immunogen.
Storage_stability :	-20°C/1 year
Msds :	<a href="#">MSDS_Antibody.pdf</a>
Molecular Weight :	45KD

## Product Images



Immunohistochemical analysis of paraffin-embedded Human-liver tissue. 1,CD16 Monoclonal Antibody(Q32) was diluted at 1:200(4°C,overnight). 2, Sodium citrate pH 6.0 was used for antibody retrieval(>98°C,20min). 3,Secondary antibody was diluted at 1:200(room temperature, 30min). Negative control was used by secondary antibody only.



Western blot analysis of 1) Jurkat, 2) K562, diluted at 1:2000.