



Histone H3 (Tri Methyl Lys79) Monoclonal Antibody(3G3)

Catalog_no :	AM3091
Applications :	WB,IHC-p,IF,IP
Reactivity :	Human,Mouse,Rat
Category :	抗原抗体
Size :	100µg/50µg
Gene_name :	HIST1H3A/HIST1H3B/HIST1H3C/HIST1H3D/HIST1H3E/HIST1H3F/HIST1H3G/HIST1H3H/HIST1H3I/HIST1H3J/HIST2H3A/HIST2H3C/HIST2H3D/H3F3A/H3F3B
Protein_name :	Histone H3.1/Histone H3.2/Histone H3.3
Humangene_id :	8350/8351/8352/8353/8354/8355/8356/8357/8358/8968
Humanswissprot_no :	P68431/Q71DI3/P84243
Mousegene_id :	319152/15077/15078
Ratgene_id :	291159/100361558
Ratswissprot_no :	Q6LED0/P84245
Immunogen :	Synthetic Peptide of Histone H3 (Tri Methyl Lys79)
Specificity :	The antibody detects endogenous Histone H3 (tri methyl K79) protein.
Formulation :	PBS, pH 7.4, containing 0.02% sodium azide as Preservative and 50% Glycerol.
Source :	Mouse
Dilution :	WB: 1:500-2000 IP:1:200 IF 1:200 IHC 1:50-300
Purification :	The antibody was affinity-purified from mouse ascites by affinity-chromatography using specific immunogen.
Storage_stability :	-20°C/1 year
Msds :	MSDS_Antibody.pdf
Other_name :	HIST1H3A; H3FA; HIST1H3B; H3FL; HIST1H3C; H3FC; HIST1H3D; H3FB; HIST1H3E; H3FD; HIST1H3F; H3FI; HIST1H3G; H3FH; HIST1H3H; H3FK; HIST1H3I; H3FF; HIST1H3J; H3FJ; Histone H3.1; Histone H3/a; Histone H3/b; Histone H3/c; Histone H3/d; Histone H3/f; Histone H3/h; Histone H3/i; Histone H3/j; Histone H3/k; Histone H3/l; HIST2H3A; HIST2H3C; H3F2; H3FM; HIST2H3D; Histone H3.2; Histone H3/m; Histone H3/o; H3F3A;

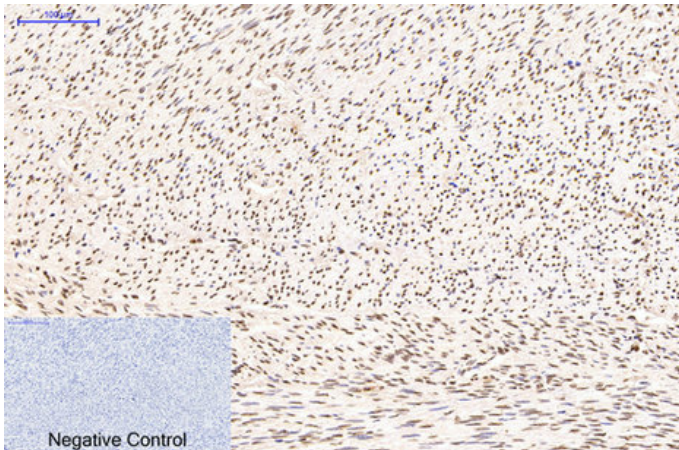


H3.3A; H3F3; PP781; H3F3B; H3.3B; Histone H3.3

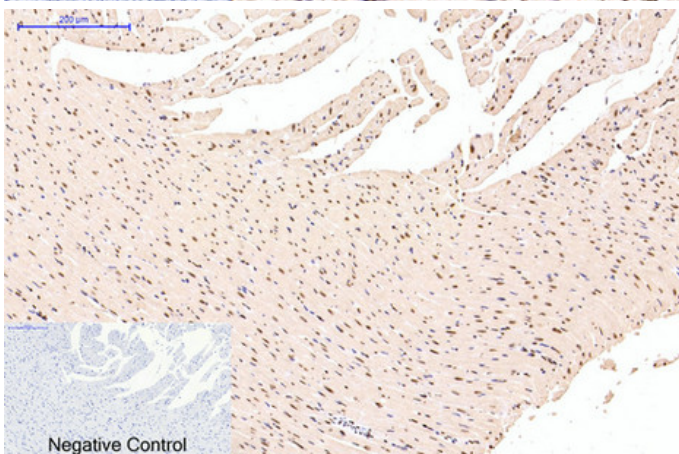
Molecular
Weight :

15KD

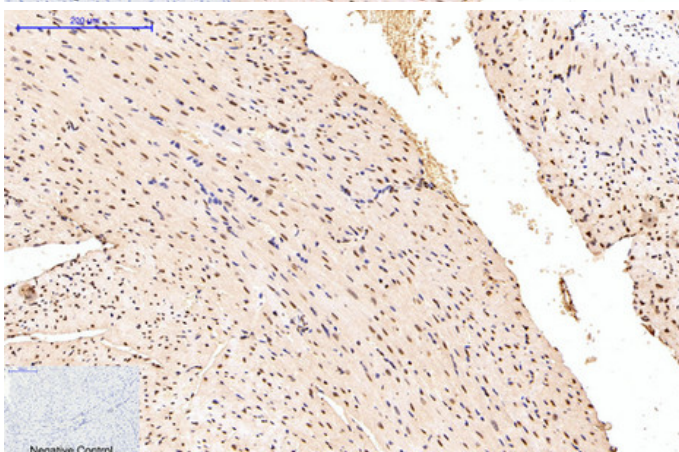
Product Images



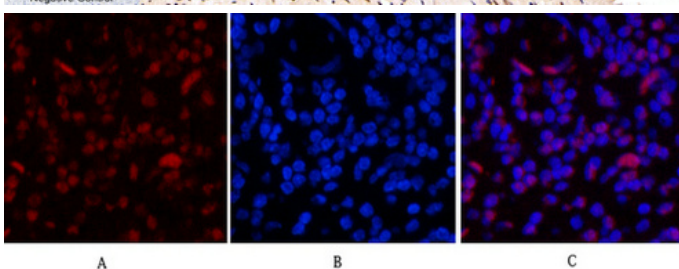
Immunohistochemical analysis of paraffin-embedded Human-uterus tissue. 1, Histone H3 (Tri Methyl Lys79) Monoclonal Antibody(3G3) was diluted at 1:200(4°C, overnight). 2, Sodium citrate pH 6.0 was used for antibody retrieval(>98°C, 20min). 3, Secondary antibody was diluted at 1:200(room temperature, 30min). Negative control was used by secondary antibody only.



Immunohistochemical analysis of paraffin-embedded Rat-heart tissue. 1, Histone H3 (Tri Methyl Lys79) Monoclonal Antibody(3G3) was diluted at 1:200(4°C, overnight). 2, Sodium citrate pH 6.0 was used for antibody retrieval(>98°C, 20min). 3, Secondary antibody was diluted at 1:200(room temperature, 30min). Negative control was used by secondary antibody only.

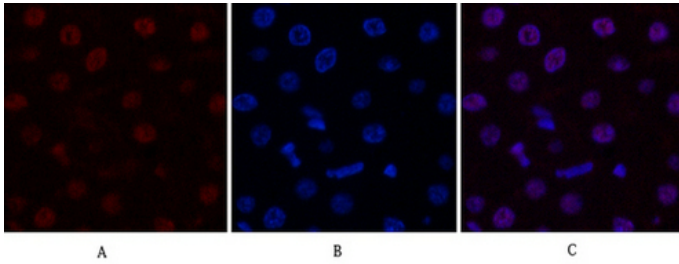


Immunohistochemical analysis of paraffin-embedded Mouse-heart tissue. 1, Histone H3 (Tri Methyl Lys79) Monoclonal Antibody(3G3) was diluted at 1:200(4°C, overnight). 2, Sodium citrate pH 6.0 was used for antibody retrieval(>98°C, 20min). 3, Secondary antibody was diluted at 1:200(room temperature, 30min). Negative control was used by secondary antibody only.

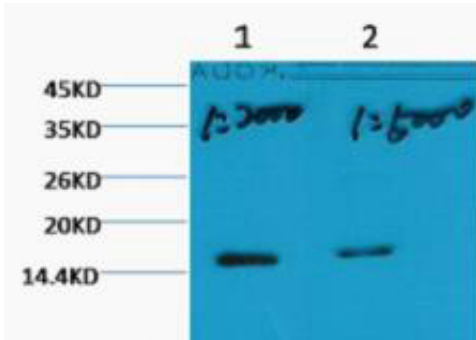


Immunofluorescence analysis of Human-appendix tissue. 1, Histone H3 (Tri Methyl Lys79) Monoclonal Antibody(3G3)(red) was diluted at 1:200(4°C, overnight). 2, Cy3 labeled Secondary antibody was diluted at 1:300(room temperature, 50min). 3, Picture B: DAPI(blue) 10min. Picture A: Target. Picture B: DAPI. Picture C: merge of A+B

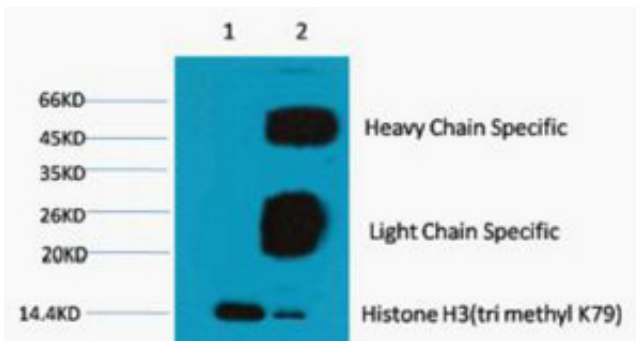
Immunofluorescence analysis of Rat-liver tissue. 1, Histone H3 (Tri Methyl Lys79) Monoclonal Antibody(3G3)(red) was diluted at 1:200(4°C, overnight).



2, Cy3 labeled Secondary antibody was diluted at 1:300(room temperature, 50min).3, Picture B: DAPI(blue) 10min. Picture A:Target. Picture B: DAPI. Picture C: merge of A+B



Western blot analysis of HeLa, diluted at 1) 1:2000 2) 1:5000 cells nucleus extracted by Minute TM Cytoplasmic and Nuclear Fractionation kit (SC-003, Inventbiotech, MN, USA).



1) Input: HeLa Cell Lysate 2) IP product: IP dilute 1:200