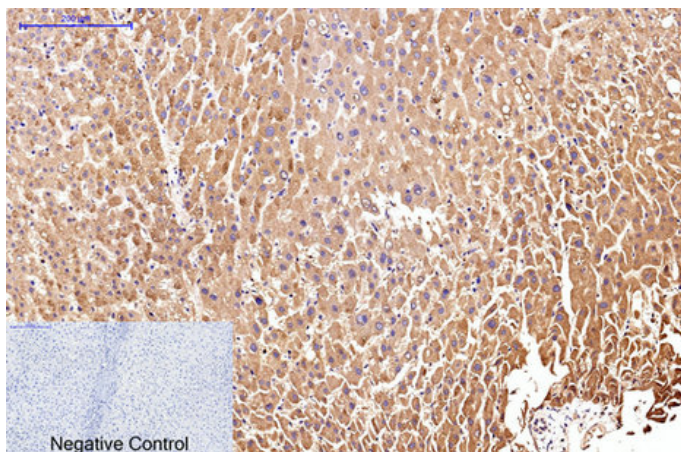


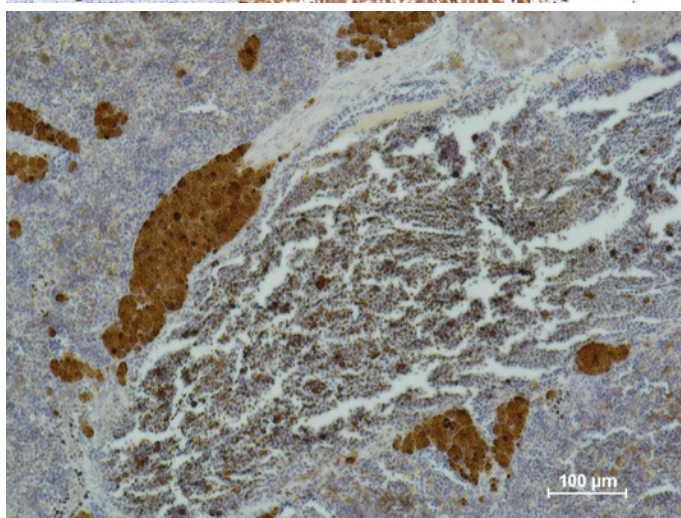
CD25 Monoclonal Antibody(Q22)

Catalog_no :	<u>AM3107</u>
Applications :	<u>IHC-p</u>
Reactivity :	<u>Human</u>
Category :	<u>抗原抗体</u>
Size :	<u>100µg/50µg</u>
Gene_name :	<u>IL2RA</u>
Protein_name :	<u>Interleukin-2 receptor subunit alpha</u>
Humangene_id :	<u>3559</u>
Humanswissprot_no :	<u>P01589</u>
Mousegene_id :	<u>16184</u>
Mouseswissprot_no :	<u>P01590</u>
Ratgene_id :	<u>25704</u>
Ratswissprot_no :	<u>P26897</u>
Immunogen :	<u>Synthetic Peptide of CD25</u>
Specificity :	<u>The antibody detects endogenous human CD25 protein.</u>
Formulation :	<u>PBS, pH 7.4, containing 0.02% sodium azide as Preservative and 50% Glycerol.</u>
Source :	<u>Mouse</u>
Dilution :	<u>IHC: 1:200</u>
Purification :	<u>The antibody was affinity-purified from mouse ascites by affinity-chromatography using specific immunogen.</u>
Storage_stability :	<u>-20°C/1 year</u>
Msds :	<u>MSDS_Antibody.pdf</u>
Other_name :	<u>IL2RA; Interleukin-2 receptor subunit alpha; IL-2 receptor subunit alpha; IL-2-RA; IL-2R subunit alpha; IL2-RA; TAC antigen; p55; CD25</u>

Product Images



Immunohistochemical analysis of paraffin-embedded Human-liver tissue. 1,CD25 Monoclonal Antibody(Q22) was diluted at 1:200(4°C,overnight). 2, Sodium citrate pH 6.0 was used for antibody retrieval(>98°C,20min). 3,Secondary antibody was diluted at 1:200(room temperature, 30min). Negative control was used by secondary antibody only.



Immunohistochemical analysis of paraffin-embedded Mouse Spleen Tissue using CD 25 Mouse mAb diluted at 1:500.