



## PARP Monoclonal Antibody(M3)

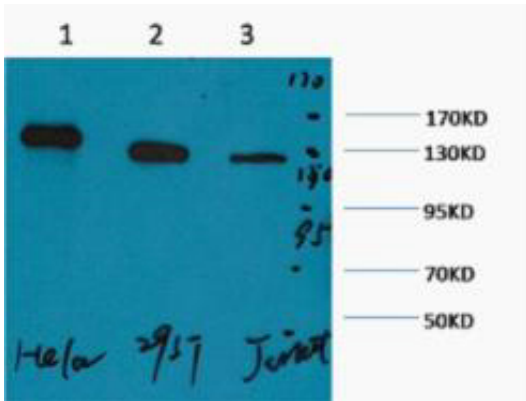
Catalog_no :	AM3131
Applications :	WB
Reactivity :	Human,Chicken(testedbyyourcustomer )
Category :	抗原抗体
Size :	100µg/50µg
Gene_name :	PARP1
Protein_name :	Poly [ADP-ribose] polymerase 1
Humangene_id	<a href="#">142</a>
:	
Humanswissprot	<a href="#">P09874</a>
_no :	
Mouseswissprot	<a href="#">P11103</a>
_no :	
Ratgene_id :	<a href="#">25591</a>
Ratswissprot_no	<a href="#">P27008</a>
:	
Immunogen :	Synthetic Peptide of PARP
Specificity :	The antibody detects endogenous PARP protein.
Formulation :	PBS, pH 7.4, containing 0.02% sodium azide as Preservative and 50% Glycerol.
Source :	Mouse
Dilution :	WB: 1:1000-3000
Purification :	The antibody was affinity-purified from mouse ascites by affinity-chromatography using specific immunogen.
Storage_stability	-20°C/1 year
:	
Msds :	MSDS_Antibody.pdf
Other_name :	Poly [ADP-ribose] polymerase 1 (PARP-1) (EC 2.4.2.30) (ADP-ribosyltransferase diphtheria toxin-like 1) (ARTD1) (NAD(+) ADP-ribosyltransferase 1) (ADPRT 1) (Poly[ADP-ribose] synthase 1)
Molecular	116KD



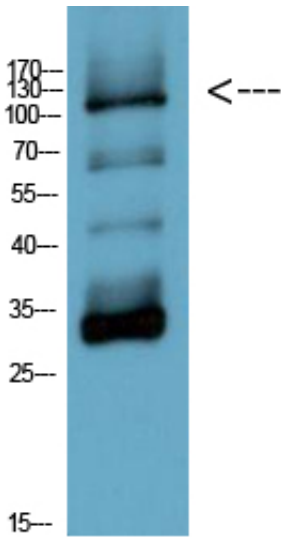
Weight :

---

Product Images



Western blot analysis of 1) HeLa, 2) 293T, 3) Jurkat, diluted at 1:2000. cells nucleus extracted by Minute TM Cytoplasmic and Nuclear Fractionation kit (SC-003, Inventbiotech, MN, USA).



Western Blot analysis of chicken cell lysis using Antibody diluted at 1:1000

chicken cell lysis