

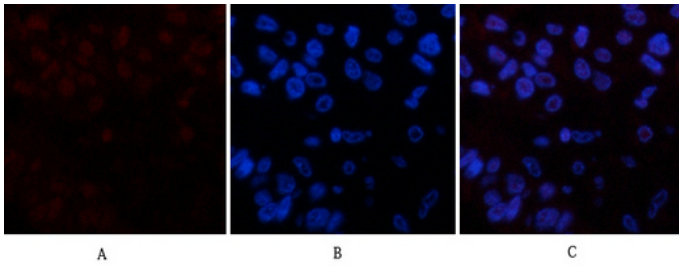
Cleaved PARP Monoclonal Antibody(Mix)

Catalog_no :	AM3145
Applications :	IF,WB,IHC-p,
Reactivity :	Human
Category :	抗原抗体
Size :	100µg/50µg
Gene_name :	PARP1
Protein_name :	Poly [ADP-ribose] polymerase 1
Humangene_id	142
:	
Humanswissprot	P09874
_no :	
Mouseswissprot	P11103
_no :	
Ratgene_id :	25591
Ratswissprot_no	P27008
:	
Immunogen :	Synthetic Peptide of Cleaved PARP
Specificity :	The antibody detects endogenous pro and active PARP protein.
Formulation :	PBS, pH 7.4, containing 0.02% sodium azide as Preservative and 50% Glycerol.
Source :	Mouse
Dilution :	IF: 1:50-200 WB: 1:2000-5000 IHC 1:50-300
Purification :	The antibody was affinity-purified from mouse ascites by affinity-chromatography using specific immunogen.
Storage_stability	-20°C/1 year
:	
Msds :	MSDS_Antibody.pdf
Other_name :	PARP1; ADPRT; PPOL; Poly [ADP-ribose] polymerase 1; PARP-1; ADP-ribosyltransferase diphtheria toxin-like 1; ARTD1; NAD(+) ADP-ribosyltransferase 1; ADPRT 1; Poly[ADP-ribose] synthase 1
Molecular	116KD,89KD

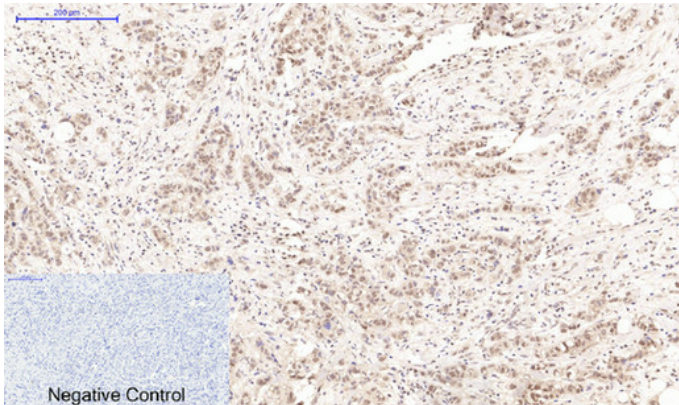


Weight :

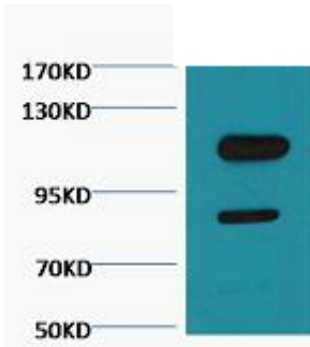
Product Images



Immunofluorescence analysis of human-liver-cancer tissue. 1, Cleaved PARP Monoclonal Antibody (Mix) (red) was diluted at 1:200 (4°C, overnight). 2, Cy3 labeled Secondary antibody was diluted at 1:300 (room temperature, 50 min). 3, Picture B: DAPI (blue) 10 min. Picture A: Target. Picture B: DAPI. Picture C: merge of A+B



Immunohistochemical analysis of paraffin-embedded Human-breast-cancer tissue. 1, Cleaved PARP Monoclonal Antibody (Mix) was diluted at 1:200 (4°C, overnight). 2, Sodium citrate pH 6.0 was used for antibody retrieval (>98°C, 20 min). 3, Secondary antibody was diluted at 1:200 (room temperature, 30 min). Negative control was used by secondary antibody only.



Western blot analysis of Jurkat, diluted at 1:3000. cells nucleus extracted by Minute TM Cytoplasmic and Nuclear Fractionation kit (SC-003, Invent biotech, MN, USA).