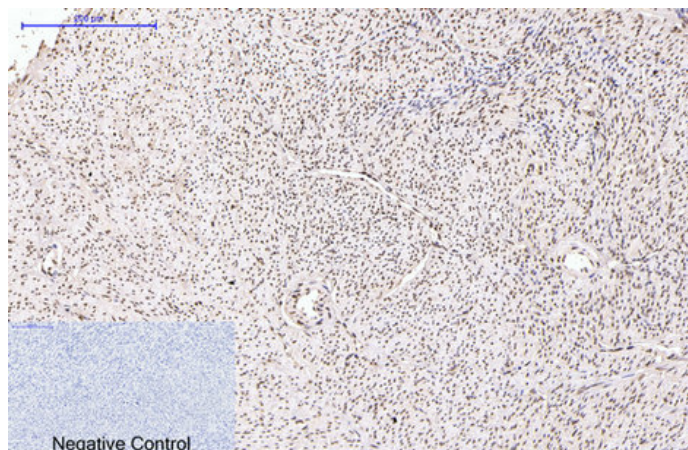




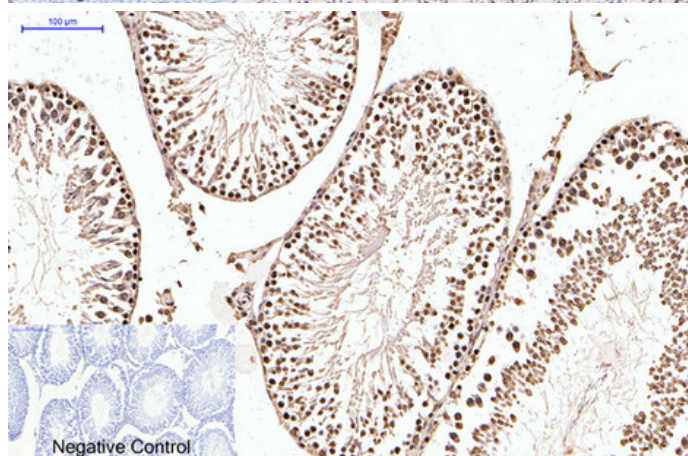
## PR Monoclonal Antibody(Z15)

|                     |  |
|---------------------|--|
| Catalog_no :        | AM3348   |
| Applications :      | IHC-p,IF   |
| Reactivity :        | Human,Mouse,Rat  |
| Category :          | 抗原抗体   |
| Size :              | 100µg/50µg   |
| Gene_name :         | PGR  |
| Protein_name :      | Progesterone receptor  |
| Humangene_id :      | <a href="#">5241</a>   |
| Humanswissprot_no : | <a href="#">P06401</a>   |
| Immunogen :         | Synthetic Peptide of PR  |
| Specificity :       | The antibody detects endogenous PR protein.  |
| Formulation :       | PBS, pH 7.4, containing 0.02% sodium azide as Preservative and 50% Glycerol.                                       |
| Source :            | Mouse  |
| Dilution :          | IHC: 1:200 IF: 1:100-200   |
| Purification :      | The antibody was affinity-purified from mouse ascites by affinity-chromatography using epitope-specific immunogen. |
| Storage_stability : | -20°C/1 year   |
| Msds :              | <a href="#">MSDS_Antibody.pdf</a>  |
| Other_name :        | PGR; NR3C3; Progesterone receptor; PR; Nuclear receptor subfamily 3 group C member 3                               |

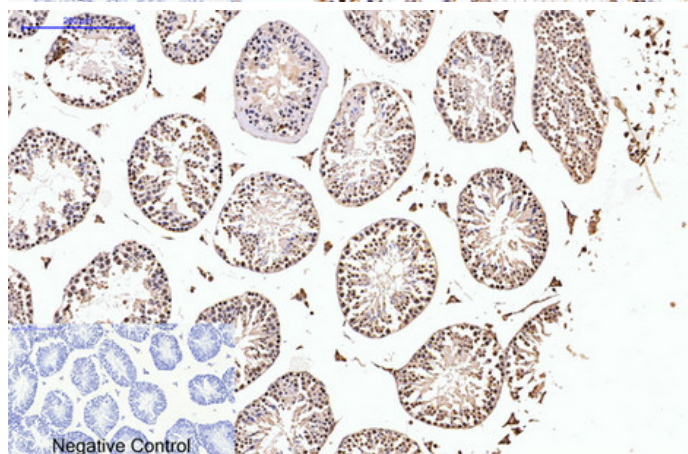
## Product Images



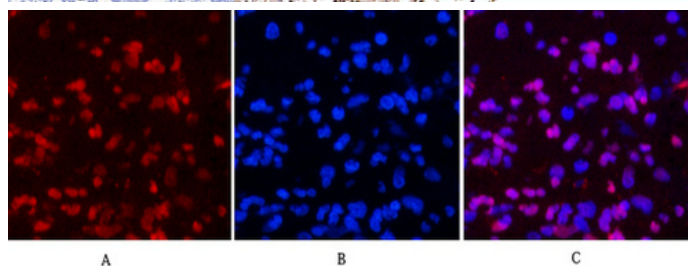
Immunohistochemical analysis of paraffin-embedded Human-uterus tissue. 1,PR Monoclonal Antibody(Z15) was diluted at 1:200(4°C,overnight). 2, Sodium citrate pH 6.0 was used for antibody retrieval(>98°C,20min). 3,Secondary antibody was diluted at 1:200(room temperature, 30min). Negative control was used by secondary antibody only.



Immunohistochemical analysis of paraffin-embedded Rat-testis tissue. 1,PR Monoclonal Antibody(Z15) was diluted at 1:200(4°C,overnight). 2, Sodium citrate pH 6.0 was used for antibody retrieval(>98°C,20min). 3,Secondary antibody was diluted at 1:200(room temperature, 30min). Negative control was used by secondary antibody only.

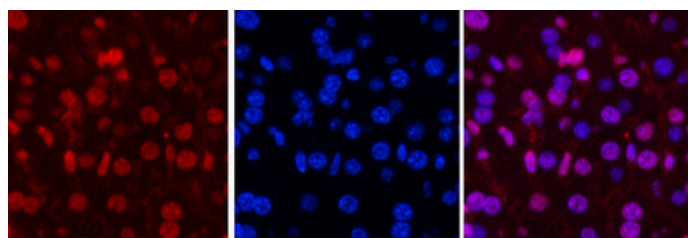


Immunohistochemical analysis of paraffin-embedded Mouse-testis tissue. 1,PR Monoclonal Antibody(Z15) was diluted at 1:200(4°C,overnight). 2, Sodium citrate pH 6.0 was used for antibody retrieval(>98°C,20min). 3,Secondary antibody was diluted at 1:200(room temperature, 30min). Negative control was used by secondary antibody only.



Immunofluorescence analysis of Human-appendix tissue. 1,PR Monoclonal Antibody(Z15)(red) was diluted at 1:200(4°C,overnight). 2, Cy3 labeled Secondary antibody was diluted at 1:300(room temperature, 50min).3, Picture B: DAPI(blue) 10min. Picture A:Target. Picture B: DAPI. Picture C: merge of A+B

Immunofluorescence analysis of Mouse-liver tissue. 1,PR Monoclonal Antibody(Z15)(red) was diluted at 1:200(4°C,overnight). 2, Cy3 labeled Secondary antibody

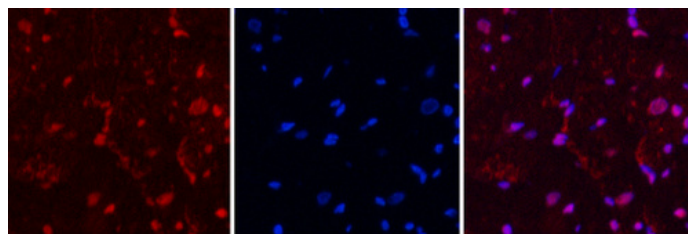


A

B

C

was diluted at 1:300(room temperature, 50min).3, Picture B: DAPI(blue) 10min. Picture A:Target. Picture B: DAPI. Picture C: merge of A+B

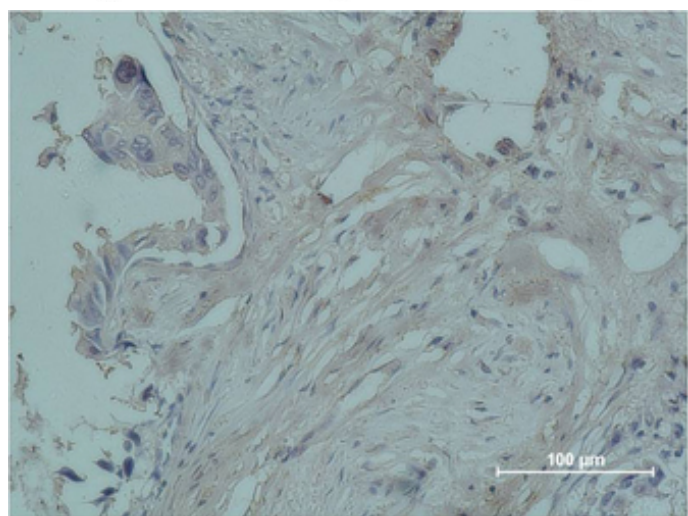


A

B

C

Immunofluorescence analysis of Rat-heart tissue. 1,PR Monoclonal Antibody(Z15)(red) was diluted at 1:200(4°C,overnight). 2, Cy3 labeled Secondary antibody was diluted at 1:300(room temperature, 50min).3, Picture B: DAPI(blue) 10min. Picture A:Target. Picture B: DAPI. Picture C: merge of A+B



Immunohistochemical analysis of paraffin-embedded human breast carcinoma using PR Monoclonal Antibody.