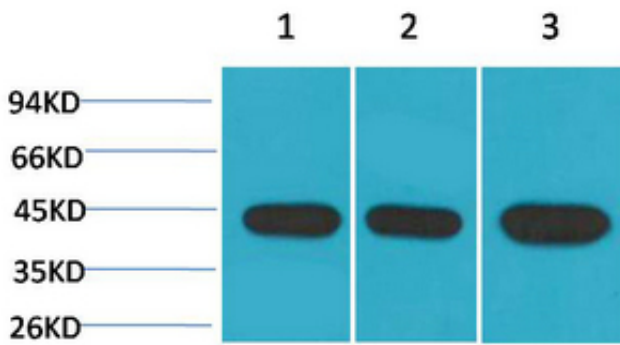




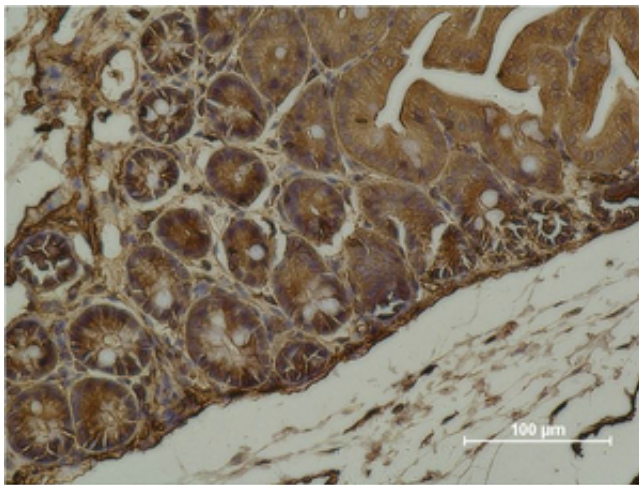
α-SMA Monoclonal Antibody(1E12)

Catalog_no :	AM3364
Applications :	WB,IHC-p
Reactivity :	Human,Mouse,Rat
Category :	抗原抗体
Size :	100μg/50μg
Gene_name :	ACTA2
Protein_name :	Actin, aortic smooth muscle
Humangene_id :	59
Humanswissprot_no :	P62736
Immunogen :	Synthetic Peptide of α-SMA
Specificity :	The antibody detects endogenous α-SMA protein.
Formulation :	PBS, pH 7.4, containing 0.02% sodium azide as Preservative and 50% Glycerol.
Source :	Mouse
Dilution :	WB: 1:5000-50000 IHC: 1:1000-2000
Purification :	The antibody was affinity-purified from mouse ascites by affinity-chromatography using epitope-specific immunogen.
Storage_stability :	-20°C/1 year
Msds :	MSDS_Antibody.pdf
Other_name :	ACTA2; ACTSA; ACTVS; GIG46; Actin, aortic smooth muscle; Alpha-actin-2; Cell growth-inhibiting gene 46 protein
Molecular Weight :	42KD

Product Images



Western blot analysis of 1) HeLa, 2) 3T3, 3) Rat Brain using α -SMA Monoclonal Antibody.



Immunohistochemical analysis of paraffin-embedded Mouse Cecal Tissue using α -SMA Monoclonal Antibody.

Pancreatic stellate cel



Wuhan Union Hospital

The picture was kindly provided by our customer