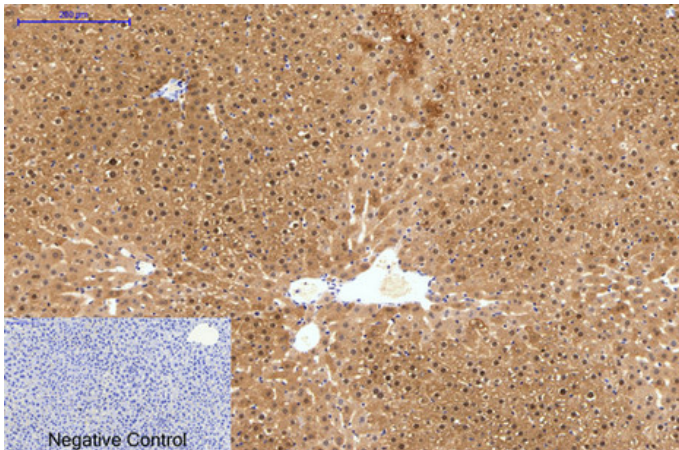




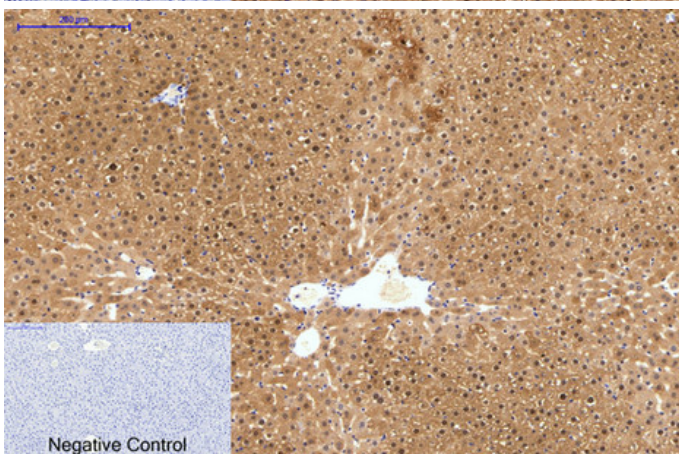
HAO1 Monoclonal Antibody(Mix)

Catalog_no :	AM3378
Applications :	WB,IHC-p,IF,
Reactivity :	Mouse,Rat
Category :	抗原抗体
Size :	100µg/50µg
Gene_name :	HAO1
Protein_name :	Hydroxyacid oxidase 1
Humangene_id	54363
:	
Humanswissprot	Q9UJM8
_no :	
Immunogen :	Recombinant Protein of HAO1
Specificity :	The antibody detects endogenous HAO1 protein.
Formulation :	PBS, pH 7.4, containing 0.02% sodium azide as Preservative and 50% Glycerol.
Source :	Mouse
Dilution :	WB: 1:1000-2000 IF 1:200 IHC 1:50-300
Purification :	The antibody was affinity-purified from mouse ascites by affinity-chromatography using epitope-specific immunogen.
Storage_stability	-20°C/1 year
:	
Msds :	MSDS_Antibody.pdf
Other_name :	Hydroxyacid oxidase 1; HAOX1; Glycolate oxidase; GOX
Molecular Weight :	41KD

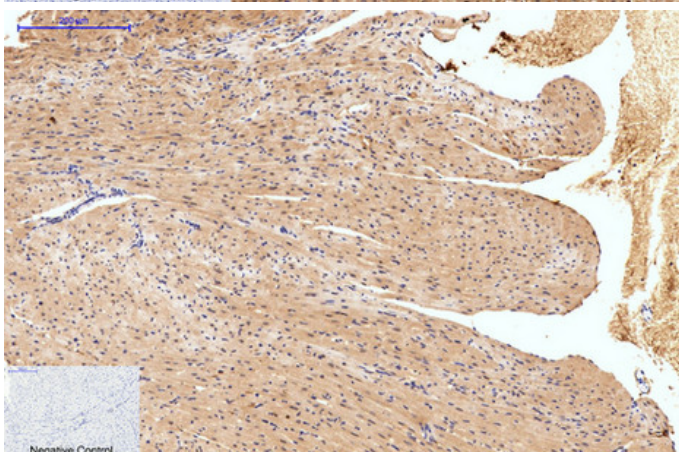
Product Images



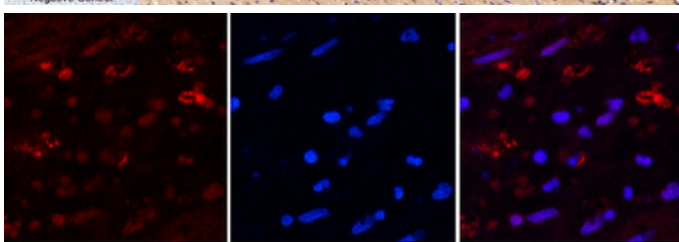
Immunohistochemical analysis of paraffin-embedded Human-liver tissue. 1,HAO1 Monoclonal Antibody(Mix) was diluted at 1:200(4°C,overnight). 2, Sodium citrate pH 6.0 was used for antibody retrieval(>98°C,20min). 3,Secondary antibody was diluted at 1:200(room temperature, 30min). Negative control was used by secondary antibody only.



Immunohistochemical analysis of paraffin-embedded Rat-liver tissue. 1,HAO1 Monoclonal Antibody(Mix) was diluted at 1:200(4°C,overnight). 2, Sodium citrate pH 6.0 was used for antibody retrieval(>98°C,20min). 3,Secondary antibody was diluted at 1:200(room temperature, 30min). Negative control was used by secondary antibody only.



Immunohistochemical analysis of paraffin-embedded Mouse-heart tissue. 1,HAO1 Monoclonal Antibody(Mix) was diluted at 1:200(4°C,overnight). 2, Sodium citrate pH 6.0 was used for antibody retrieval(>98°C,20min). 3,Secondary antibody was diluted at 1:200(room temperature, 30min). Negative control was used by secondary antibody only.



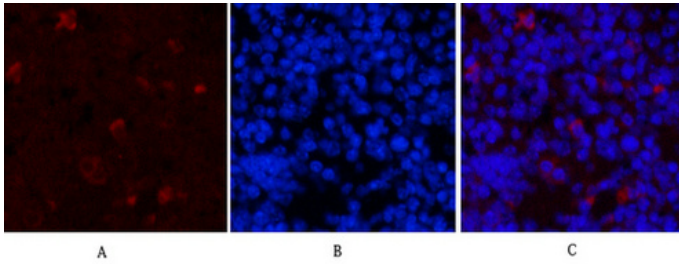
Immunofluorescence analysis of Human-appendix tissue. 1,HAO1 Monoclonal Antibody(Mix)(red) was diluted at 1:200(4°C,overnight). 2, Cy3 labeled Secondary antibody was diluted at 1:300(room temperature, 50min).3, Picture B: DAPI(blue) 10min. Picture A:Target. Picture B: DAPI. Picture C: merge of A+B

A

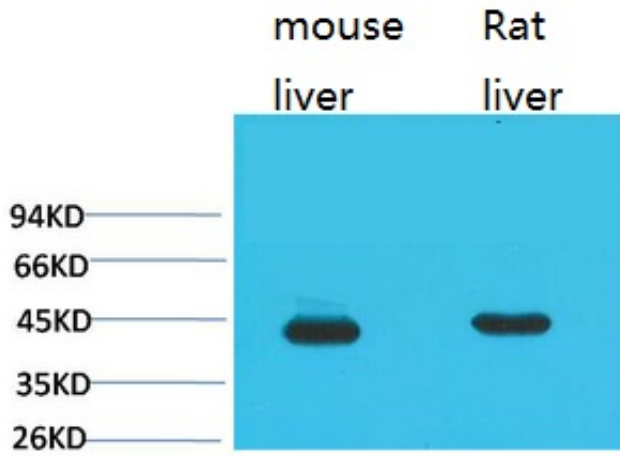
B

C

Immunofluorescence analysis of Mouse-spleen tissue. 1,HAO1 Monoclonal Antibody(Mix)(red) was diluted at 1:200(4°C,overnight). 2, Cy3 labeled Secondary antibody



was diluted at 1:300(room temperature, 50min).3,
Picture B: DAPI(blue) 10min. Picture A:Target. Picture B:
DAPI. Picture C: merge of A+B



Western blot analysis of 1) Mouse Liver Tissue, 2) Rat Liver Tissue using HAO1 Monoclonal Antibody.