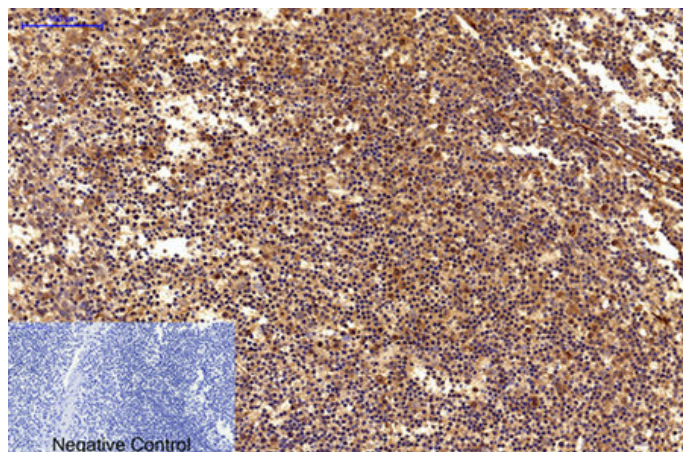




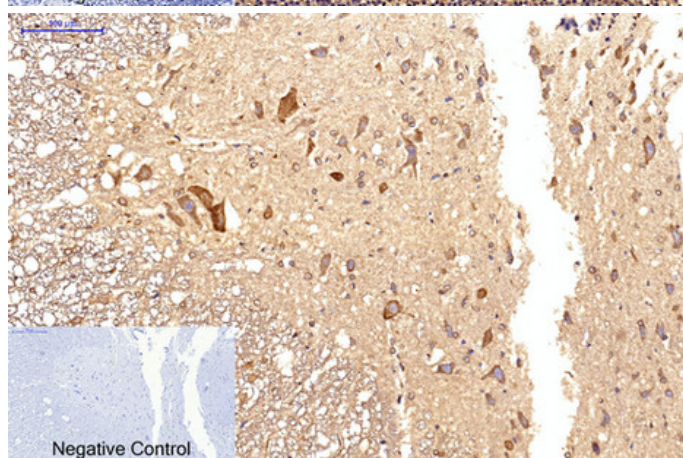
Survivin Monoclonal Antibody(Mix)

Catalog_no :	AM3419
Applications :	WB,IHC-p
Reactivity :	Human,Rat
Category :	抗原抗体
Size :	100µg/50µg
Gene_name :	BIRC5
Protein_name :	Baculoviral IAP repeat-containing protein 5
Humangene_id :	332
Humanswissprot_no :	O15392
Immunogen :	Recombinant Protein of Survivin
Specificity :	The antibody detects endogenous Survivin protein.
Formulation :	PBS, pH 7.4, containing 0.02% sodium azide as Preservative and 50% Glycerol.
Source :	Mouse
Dilution :	WB: 1:1000-2000 IHC: 1:200-500
Purification :	The antibody was affinity-purified from mouse ascites by affinity-chromatography using epitope-specific immunogen.
Storage_stability :	-20°C/1 year
Msds :	MSDS_Antibody.pdf
Other_name :	BIRC5; API4; IAP4; Baculoviral IAP repeat-containing protein 5; Apoptosis inhibitor 4; Apoptosis inhibitor survivin
Molecular Weight :	16KD

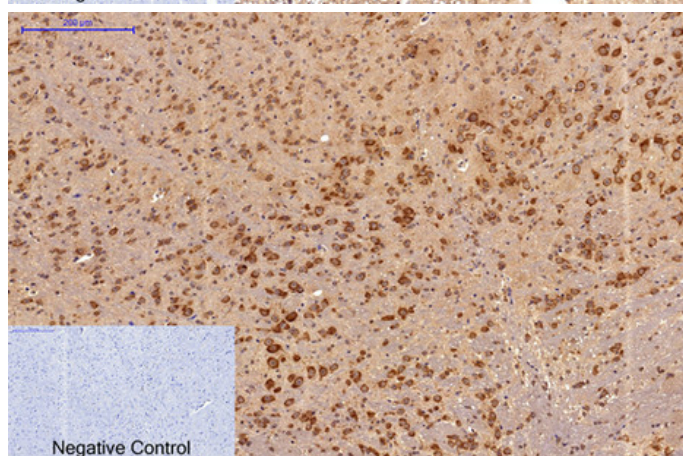
Product Images



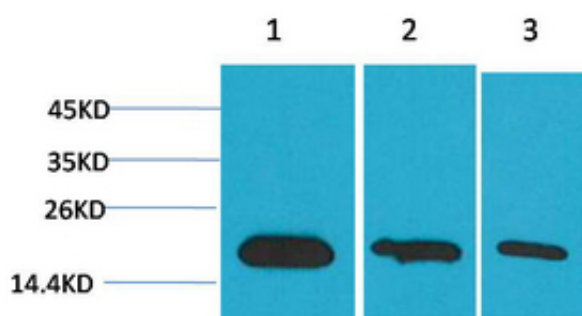
Immunohistochemical analysis of paraffin-embedded Human-Tonsil tissue. 1, Survivin Monoclonal Antibody(Mix) was diluted at 1:200(4°C, overnight). 2, Sodium citrate pH 6.0 was used for antibody retrieval(>98°C, 20min). 3, Secondary antibody was diluted at 1:200(room temperature, 30min). Negative control was used by secondary antibody only.



Immunohistochemical analysis of paraffin-embedded Rat-spinal-cord tissue. 1, Survivin Monoclonal Antibody(Mix) was diluted at 1:200(4°C, overnight). 2, Sodium citrate pH 6.0 was used for antibody retrieval(>98°C, 20min). 3, Secondary antibody was diluted at 1:200(room temperature, 30min). Negative control was used by secondary antibody only.

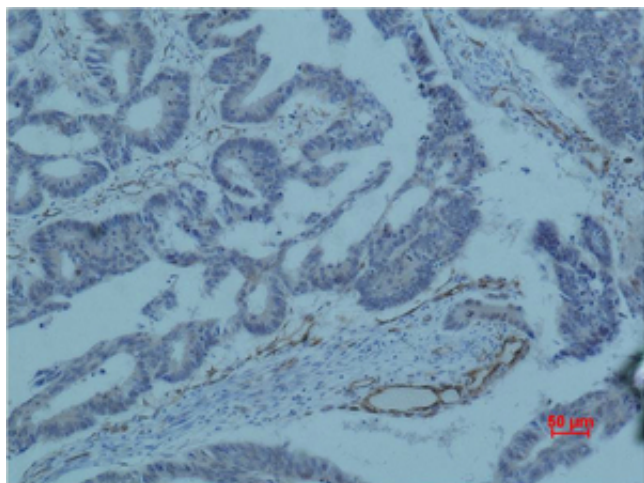


Immunohistochemical analysis of paraffin-embedded Mouse-brain tissue. 1, Survivin Monoclonal Antibody(Mix) was diluted at 1:200(4°C, overnight). 2, Sodium citrate pH 6.0 was used for antibody retrieval(>98°C, 20min). 3, Secondary antibody was diluted at 1:200(room temperature, 30min). Negative control was used by secondary antibody only.

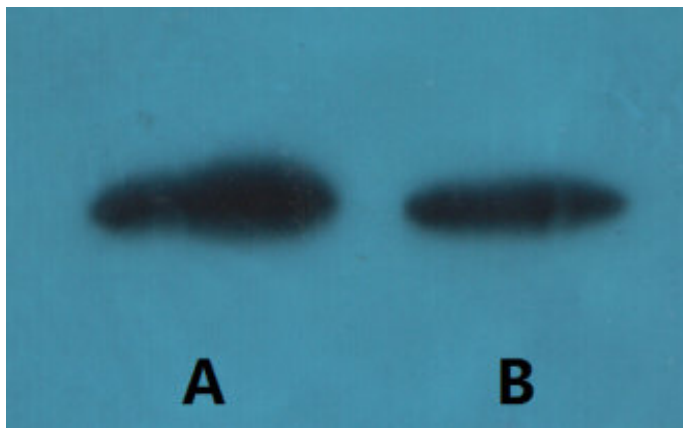


Western blot analysis of 1) HeLa, 2) 293, 3) PC12 using Survivin Monoclonal Antibody.

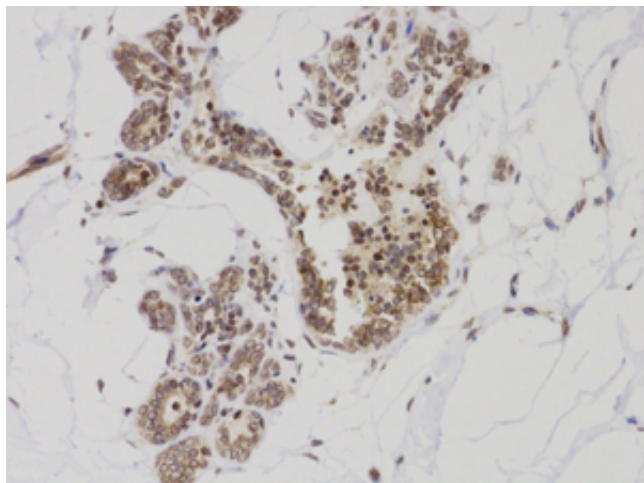
Immunohistochemical analysis of paraffin-embedded



human colon carcinoma using Survivin Monoclonal Antibody.

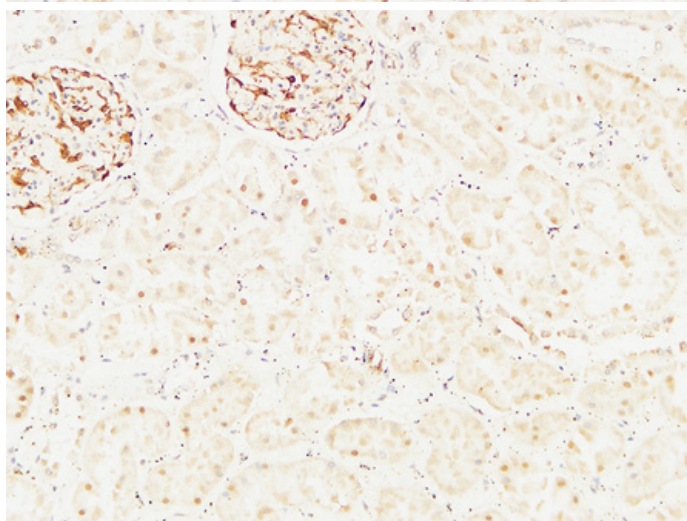
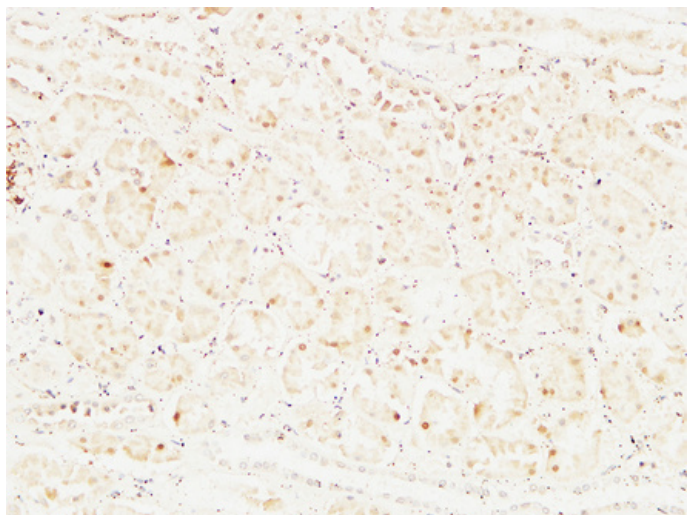


Western blot detection of Survivin in human breast cancer cell line MCF-7(A) and Cal51 (B) using Survivin mouse mAb (1:1000 diluted). Predicted band size: 16kDa. Observed band size: 16kDa. Picture was kindly provided by our customer from Tianjin Medical University Cancer Institute and Hospital

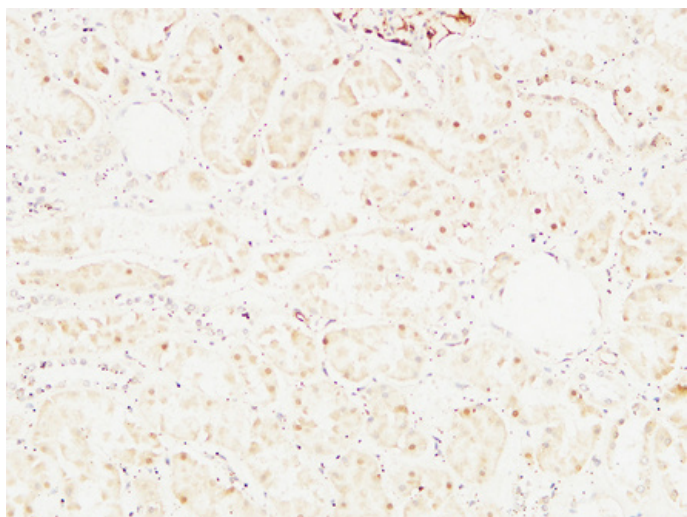


Immunohistochemical analysis of paraffin-embedded Human breast cancer. 1, Using Survivin Mouse mAb diluted at 1:200 (4°, overnight). 2, High-pressure and temperature Citric acid, pH6.0 was used for antigen retrieval. 3, Secondary antibody was diluted at 1:200 (room temperature, 50min). Picture was kindly provided by our customer from Tianjin Medical University Cancer Institute and Hospital

Immunohistochemical analysis of paraffin-embedded Human kidney. 1, Antibody was diluted at 1:200 (4°, overnight). 2, High-pressure and temperature EDTA, pH8.0 was used for antigen retrieval. 3, Secondary antibody was diluted at 1:200 (room temperature, 30min).



Immunohistochemical analysis of paraffin-embedded Human kidney. 1, Antibody was diluted at 1:200(4°,overnight). 2, High-pressure and temperature EDTA, pH8.0 was used for antigen retrieval. 3,Secondary antibody was diluted at 1:200(room temperature, 30min).



Immunohistochemical analysis of paraffin-embedded Human kidney. 1, Antibody was diluted at 1:200(4°,overnight). 2, High-pressure and temperature EDTA, pH8.0 was used for antigen retrieval. 3,Secondary antibody was diluted at 1:200(room temperature, 30min).