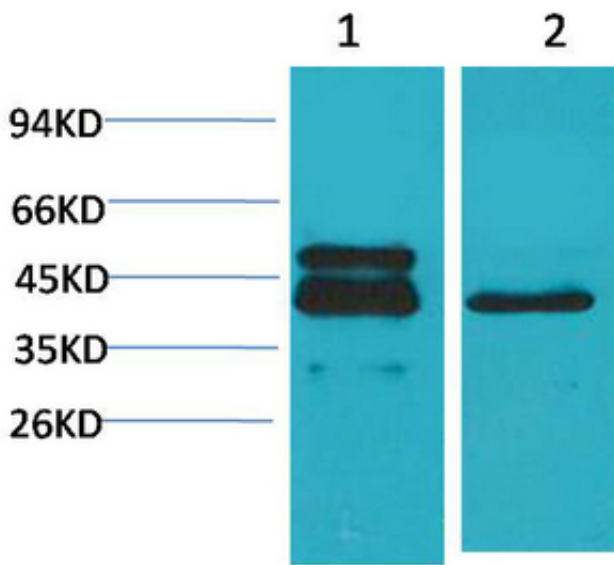




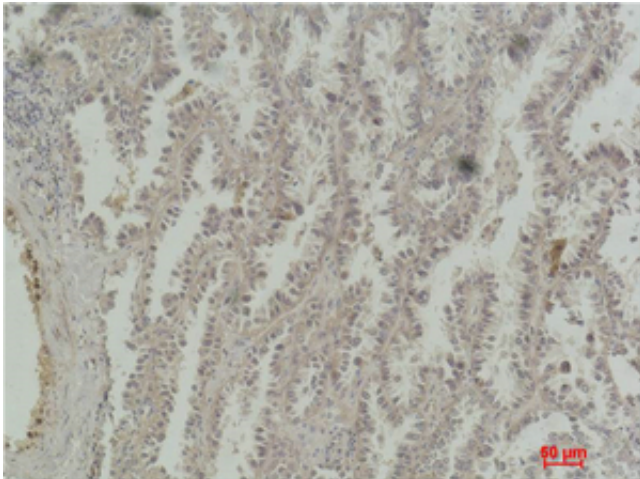
CREB-1 Monoclonal Antibody(4B4)

Catalog_no :	AM3428
Applications :	WB,IHC-p
Reactivity :	Human,Mouse
Category :	抗原抗体
Size :	100µg/50µg
Gene_name :	CREB1
Protein_name :	Cyclic AMP-responsive element-binding protein 1
Humangene_id :	1385
Humanswissprot_no :	P16220
Immunogen :	Recombinant Protein of CREB-1
Specificity :	The antibody detects endogenous CREB-1 protein.
Formulation :	PBS, pH 7.4, containing 0.02% sodium azide as Preservative and 50% Glycerol.
Source :	Mouse
Dilution :	WB: 1:500-1000 IHC: 1:100-200
Purification :	The antibody was affinity-purified from mouse ascites by affinity-chromatography using epitope-specific immunogen.
Storage_stability :	-20°C/1 year
Msds :	MSDS_Antibody.pdf
Other_name :	CREB1; Cyclic AMP-responsive element-binding protein 1; CREB-1; cAMP-responsive element-binding protein 1
Molecular Weight :	43KD

Product Images



Western blot analysis of 1) A431, 2) 3T3 using CREB-1 Monoclonal Antibody.



Immunohistochemical analysis of paraffin-embedded Human Lung Carcinoma using CREB-1 Monoclonal Antibody.