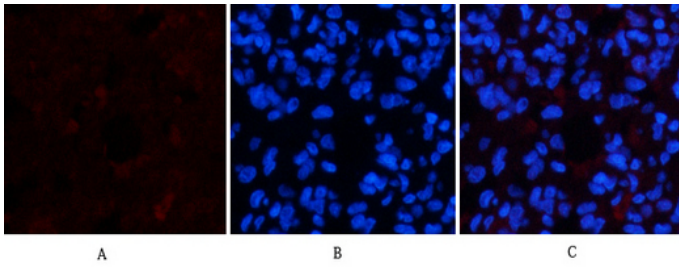




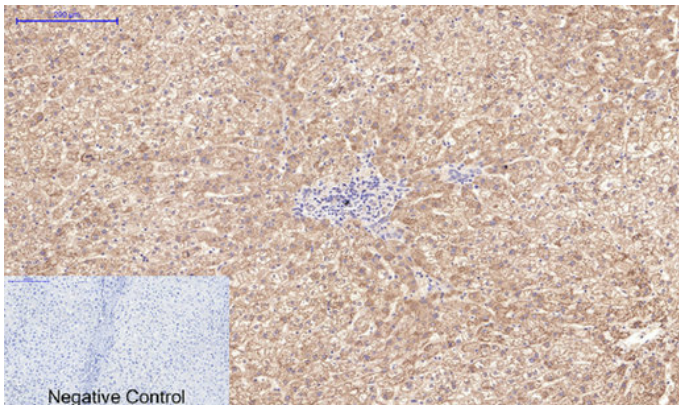
Active Caspase-3 Monoclonal Antibody(5E1)

Catalog_no :	AM3431
Applications :	IF,WB,IHC-p
Reactivity :	Human,Mouse,Rat,Chicken
Category :	抗原抗体
Size :	100µg/50µg
Gene_name :	CASP3
Protein_name :	Caspase-3
Humangene_id :	836
Humanswissprot_no :	P42574
Immunogen :	Recombinant Protein of Active Caspase-3
Specificity :	The antibody detects endogenous Active Caspase-3 protein.
Formulation :	PBS, pH 7.4, containing 0.02% sodium azide as Preservative and 50% Glycerol.
Source :	Mouse
Dilution :	IF: 1:50-200 WB: 1:500-1000 IHC: 1:100-200
Purification :	The antibody was affinity-purified from mouse ascites by affinity-chromatography using epitope-specific immunogen.
Storage_stability :	-20°C/1 year
Msds :	MSDS_Antibody.pdf
Other_name :	CASP3; CPP32; Caspase-3; CASP-3; Apopain; Cysteine protease CPP32; CPP-32; Protein Yama; SREBP cleavage activity 1; SCA-1
Molecular Weight :	17KD

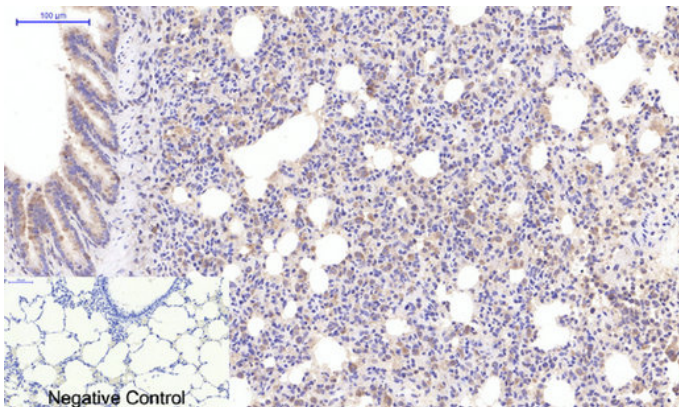
Product Images



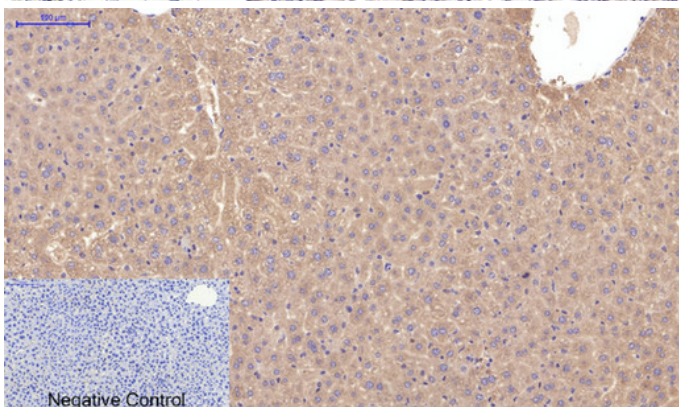
Immunofluorescence analysis of rat-lung tissue. 1,Active Caspase-3 Monoclonal Antibody(5E1)(red) was diluted at 1:200(4°C,overnight). 2, Cy3 labeled Secondary antibody was diluted at 1:300(room temperature, 50min).3, Picture B: DAPI(blue) 10min. Picture A:Target. Picture B: DAPI. Picture C: merge of A+B



Immunohistochemical analysis of paraffin-embedded Human-liver tissue. 1,Active Caspase-3 Monoclonal Antibody(5E1) was diluted at 1:200(4°C,overnight). 2, Sodium citrate pH 6.0 was used for antibody retrieval(>98°C,20min). 3,Secondary antibody was diluted at 1:200(room temperature, 30min). Negative control was used by secondary antibody only.

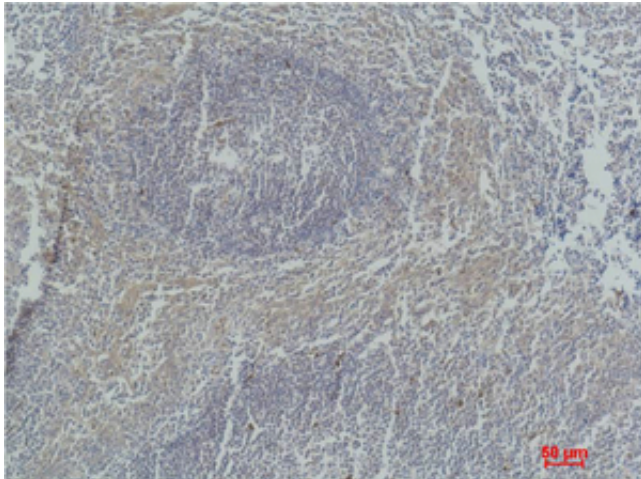
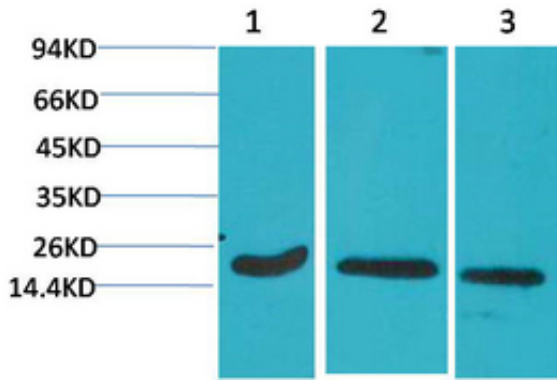


Immunohistochemical analysis of paraffin-embedded Rat-lung tissue. 1,Active Caspase-3 Monoclonal Antibody(5E1) was diluted at 1:200(4°C,overnight). 2, Sodium citrate pH 6.0 was used for antibody retrieval(>98°C,20min). 3,Secondary antibody was diluted at 1:200(room temperature, 30min). Negative control was used by secondary antibody only.

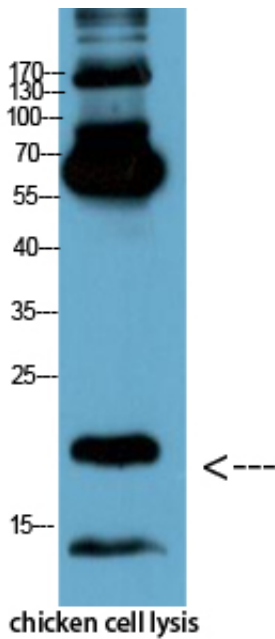


Immunohistochemical analysis of paraffin-embedded Mouse-liver tissue. 1,Active Caspase-3 Monoclonal Antibody(5E1) was diluted at 1:200(4°C,overnight). 2, Sodium citrate pH 6.0 was used for antibody retrieval(>98°C,20min). 3,Secondary antibody was diluted at 1:200(room temperature, 30min). Negative control was used by secondary antibody only.

Western blot analysis of 1) Hela, 2) 3T3, 3) Rat Brain Tissue using Active Caspase-3 Monoclonal Antibody.



Immunohistochemical analysis of paraffin-embedded Human Tonsil Tissue using Active Caspase-3 Monoclonal Antibody.



Western Blot analysis of chicken cell lysis using Antibody diluted at 1:1000