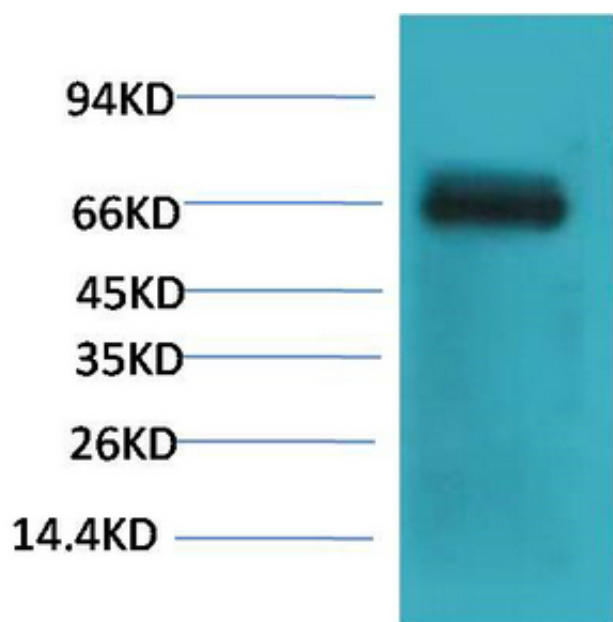




Bovine Serum Albumin Monoclonal Antibody(Mix-mA)

Catalog_no :	AM3444
Applications :	WB
Reactivity :	Cow
Category :	抗原抗体
Size :	100µg/50µg
Immunogen :	Purified Protein
Specificity :	The antibody detects endogenous Bovine Serum Albumin protein.
Formulation :	PBS, pH 7.4, containing 0.02% sodium azide as Preservative and 50% Glycerol.
Source :	Mouse
Dilution :	WB: 1:1000-2000
Purification :	The antibody was affinity-purified from mouse ascites by affinity-chromatography using epitope-specific immunogen.
Storage_stability :	-20°C/1 year
Msds :	MSDS_Antibody.pdf
Molecular Weight :	66KD

Product Images



Western blot analysis of Bovine Serum Albumin using Bovine Serum Albumin Monoclonal Antibody.