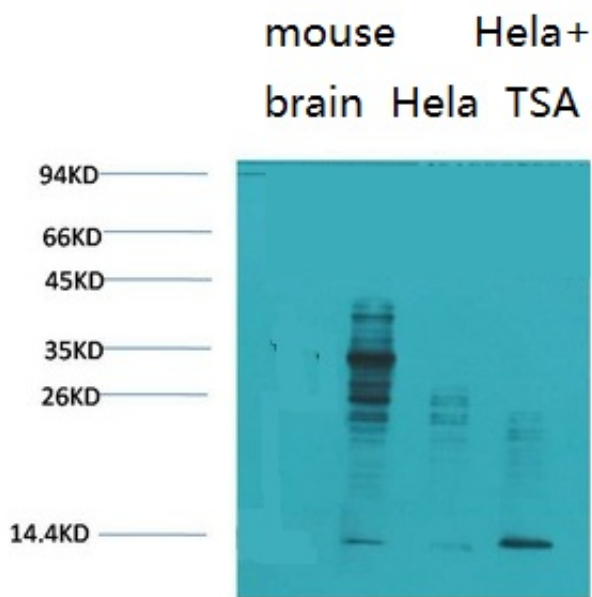




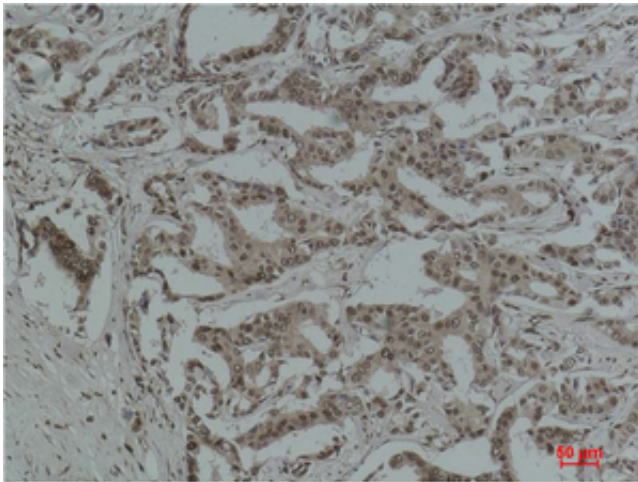
Acetyl Lysine Monoclonal Antibody(10B10)

Catalog_no :	AM3449
Applications :	WB,IHC-p
Reactivity :	All
Category :	抗原抗体
Size :	100µg/50µg
Immunogen :	Purified Protein
Specificity :	The antibody detects endogenous Acetyl Lysine protein.
Formulation :	PBS, pH 7.4, containing 0.02% sodium azide as Preservative and 50% Glycerol.
Source :	Mouse
Dilution :	WB: 1:1000-2000 IHC: 1:200-500
Purification :	The antibody was affinity-purified from mouse ascites by affinity-chromatography using epitope-specific immunogen.
Storage_stability :	-20°C/1 year
Msds :	MSDS_Antibody.pdf

Product Images



Western blot analysis of 1) Mouse Brain Tissue, 2) HeLa, 3) HeLa+TSA Treated using Acetyl Lysine Monoclonal Antibody.



Immunohistochemical analysis of paraffin-embedded Human Breast Carcinoma using Acetyl Lysine Monoclonal Antibody.