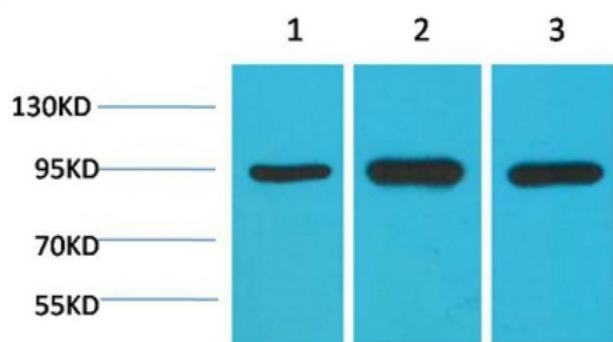


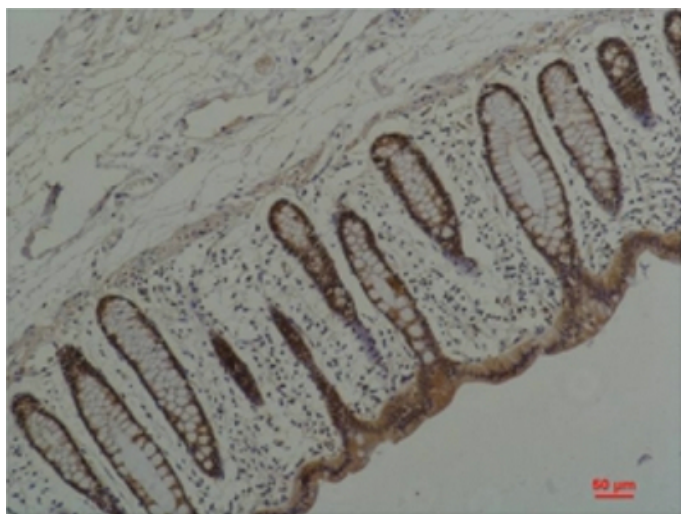
HSP90  $\alpha$  Monoclonal Antibody(1F6)

Catalog_no :	AM3480
Applications :	WB,IHC-p
Reactivity :	Human,Rat,Mouse
Category :	抗原抗体
Size :	100 $\mu$ g/50 $\mu$ g
Gene_name :	HSP90AA1
Protein_name :	Heat shock protein HSP 90-alpha (Heat shock 86 kDa) (HSP 86) (HSP86) (Renal carcinoma antigen NY-REN-38)
Humangene_id :	<a href="#">3320</a>
Humanswissprot_no :	<a href="#">P07900</a>
Immunogen :	Synthesized peptide derived from the C-terminal region of human HSP90A. at AA range: 660-740
Specificity :	The antibody detects endogenous HSP90 $\alpha$ protein
Formulation :	Liquid in PBS containing 50% glycerol, 0.5% BSA and 0.02% sodium azide.
Source :	Mouse
Dilution :	Western Blot: 1/500 - 1/2000. Immunohistochemistry: 1/100 - 1/300. ELISA: 1/40000. Not yet tested in other applications.
Purification :	The antibody was affinity-purified from rabbit antiserum by affinity-chromatography using epitope-specific immunogen.
Concentration :	1 mg/ml
Storage_stability :	-20°C/1 year
Other_name :	Heat shock protein HSP 90-alpha (Heat shock 86 kDa) (HSP 86) (HSP86) (Renal carcinoma antigen NY-REN-38)
Molecular Weight :	95KD

## Product Images



Western blot analysis of 1) HeLa, 2) Mouse Brain Tissue, 3) Rat Brain Tissue with HSP90  $\alpha$  Mouse mAb diluted at 1:2,000.



Immunohistochemical analysis of paraffin-embedded Human Colon Carcinoma using HSP90  $\alpha$  Mouse mAb diluted at 1:200.