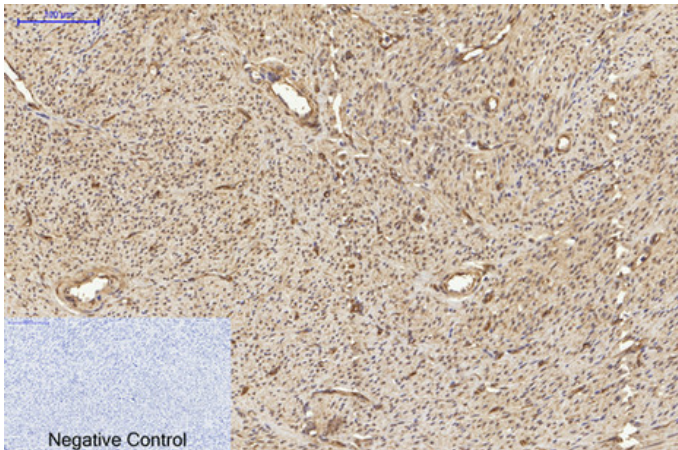


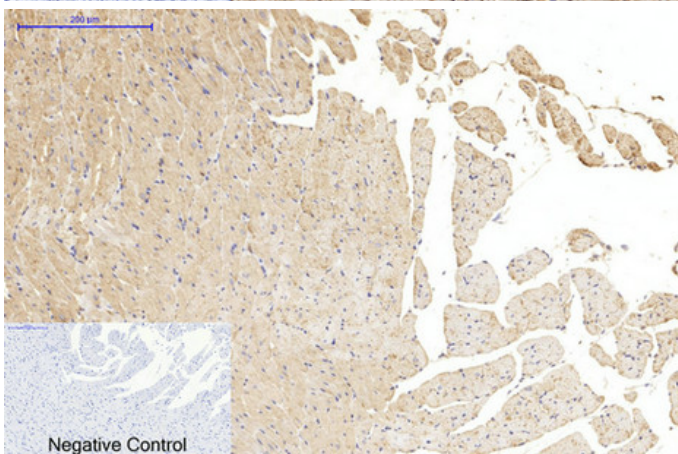
α -tubulin (Acetyl Lys40) Monoclonal Antibody(4A8)

Catalog_no :	AM3519
Applications :	WB,IF,IHC-p
Reactivity :	Human,Rat,Mouse
Category :	抗原抗体
Size :	100 μ g/50 μ g
Gene_name :	TUBA1B
Protein_name :	Tubulin alpha-1B chain (Alpha-tubulin ubiquitous) (Tubulin K-alpha-1) (Tubulin alpha-ubiquitous chain)
Humangene_id :	7277
Humanswissprot_no :	P68363
Immunogen :	Synthetic Peptide of α -tubulin (Acetyl Lys40)
Specificity :	α -tubulin (Acetyl Lys40) protein detects endogenous levels of α -tubulin (Acetyl Lys40)
Formulation :	Liquid in PBS containing 50% glycerol, 0.5% BSA and 0.02% sodium azide.
Source :	Mouse
Dilution :	WB 1:1000-2000, IHC 1:50-100 IF 1:200
Purification :	The antibody was affinity-purified from mouse ascites by affinity-chromatography using specific immunogen.
Concentration :	1 mg/ml
Storage_stability :	-20°C/1 year
Other_name :	Tubulin alpha-1B chain (Alpha-tubulin ubiquitous) (Tubulin K-alpha-1) (Tubulin alpha-ubiquitous chain)
Molecular Weight :	52KD

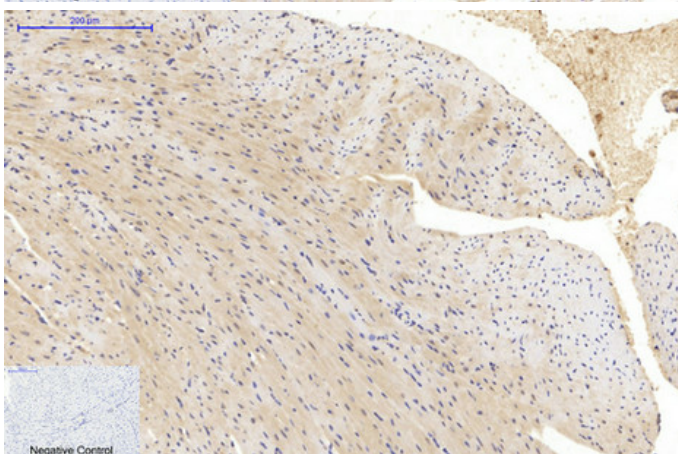
Product Images



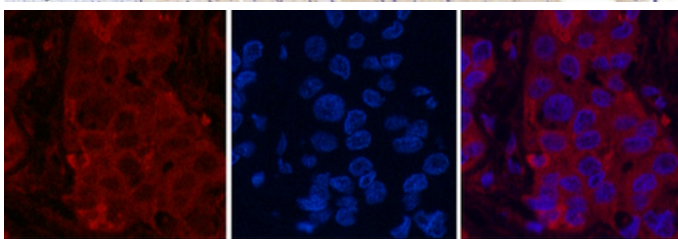
Immunohistochemical analysis of paraffin-embedded Human-uterus tissue. 1, α -tubulin (Acetyl Lys40) Monoclonal Antibody(4A8) was diluted at 1:200(4°C,overnight). 2, Sodium citrate pH 6.0 was used for antibody retrieval(>98°C,20min). 3,Secondary antibody was diluted at 1:200(room temperature, 30min). Negative control was used by secondary antibody only.



Immunohistochemical analysis of paraffin-embedded Rat-heart tissue. 1, α -tubulin (Acetyl Lys40) Monoclonal Antibody(4A8) was diluted at 1:200(4°C,overnight). 2, Sodium citrate pH 6.0 was used for antibody retrieval(>98°C,20min). 3,Secondary antibody was diluted at 1:200(room temperature, 30min). Negative control was used by secondary antibody only.

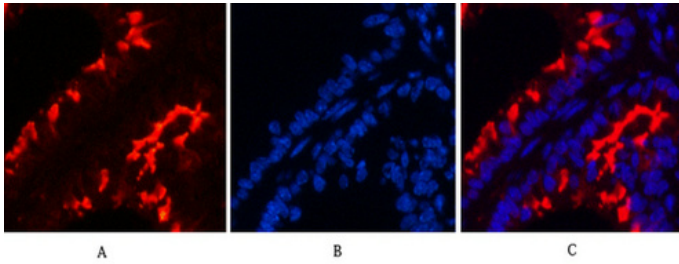


Immunohistochemical analysis of paraffin-embedded Mouse-heart tissue. 1, α -tubulin (Acetyl Lys40) Monoclonal Antibody(4A8) was diluted at 1:200(4°C,overnight). 2, Sodium citrate pH 6.0 was used for antibody retrieval(>98°C,20min). 3,Secondary antibody was diluted at 1:200(room temperature, 30min). Negative control was used by secondary antibody only.

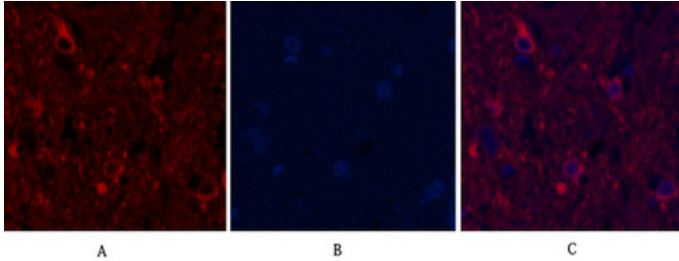


Immunofluorescence analysis of Human-liver-cancer tissue. 1, α -tubulin (Acetyl Lys40) Monoclonal Antibody(4A8)(red) was diluted at 1:200(4°C,overnight). 2, Cy3 labeled Secondary antibody was diluted at 1:300(room temperature, 50min).3, Picture B: DAPI(blue) 10min. Picture A:Target. Picture B: DAPI. Picture C: merge of A+B

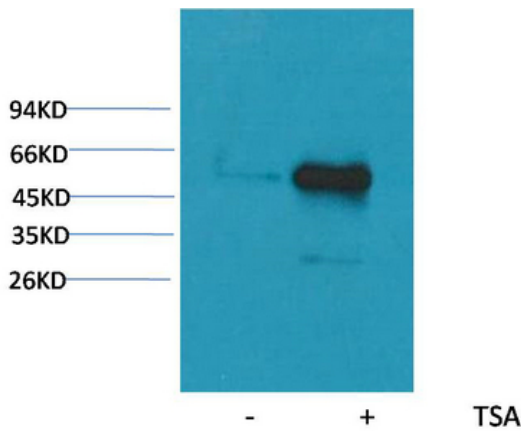
Immunofluorescence analysis of Mouse-lung tissue. 1, α -tubulin (Acetyl Lys40) Monoclonal Antibody(4A8)(red) was diluted at 1:200(4°C,overnight). 2, Cy3 labeled



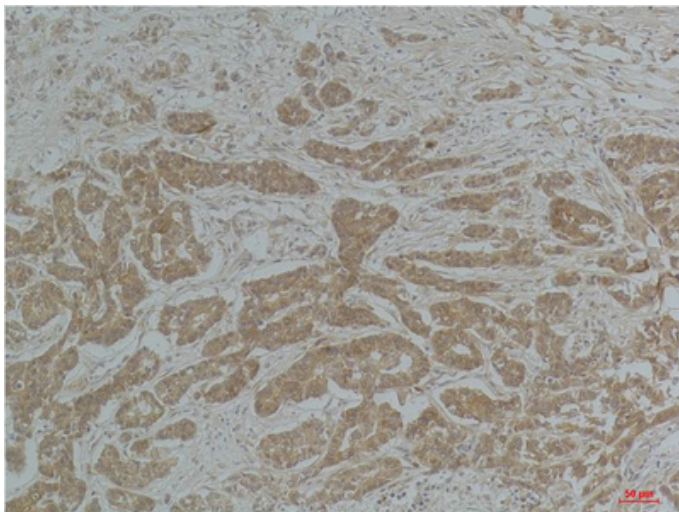
Secondary antibody was diluted at 1:300(room temperature, 50min).3, Picture B: DAPI(blue) 10min. Picture A:Target. Picture B: DAPI. Picture C: merge of A+B



Immunofluorescence analysis of Rat-spinal-cord tissue. 1, α -tubulin (Acetyl Lys40) Monoclonal Antibody(4A8)(red) was diluted at 1:200(4°C,overnight). 2, Cy3 labeled Secondary antibody was diluted at 1:300(room temperature, 50min).3, Picture B: DAPI(blue) 10min. Picture A:Target. Picture B: DAPI. Picture C: merge of A+B



Western blot analysis of extracts from Hela cells, untreated (-) or treated with TSA (1 μ M, 18 hr; +), using Acetyl- α -tubulin(Lys40) Mouse mAb 1:2000.



Immunohistochemical analysis of paraffin-embedded Human Breast Carcinoma using α -tubulin(Acetyl Lys40) Mouse mAb diluted at 1:200.

Immunohistochemical analysis of paraffin-embedded Mouse Brain Tissue using α -tubulin(Acetyl Lys40) Mouse mAb diluted at 1:200.

