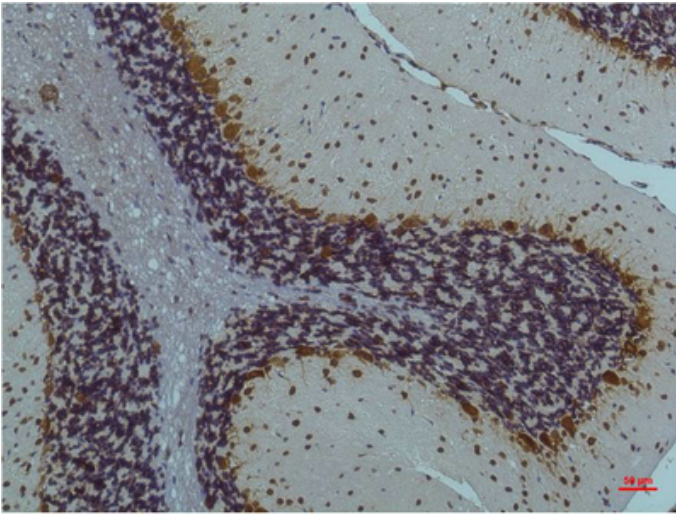




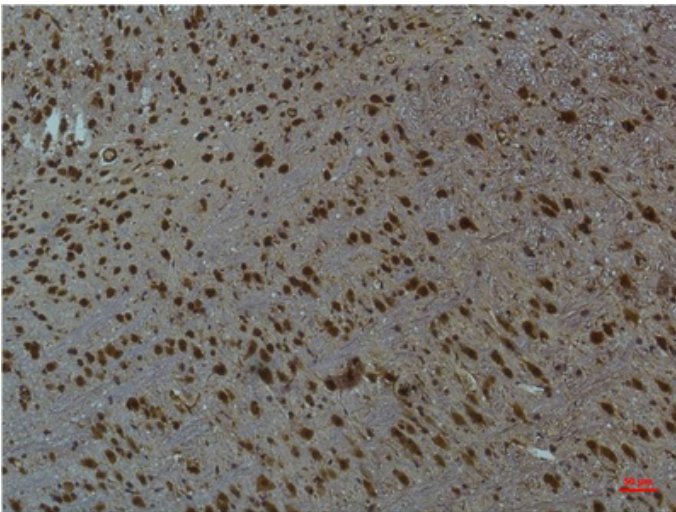
CaMKII $\beta/\gamma/\delta$ (Phospho Thr287) Monoclonal Antibody(1B9)

Catalog_no :	AM3524
Applications :	IHC-p
Reactivity :	Human,Rat,Mouse
Category :	抗原抗体
Size :	100 μ g/50 μ g
Humangene_id :	816/817/818
Humanswissprot_no :	Q13554/Q13555/Q13557
Immunogen :	Synthetic Peptide of CaMKII $\beta/\gamma/\delta$ (Phospho Thr287)
Specificity :	CaMKII $\beta/\gamma/\delta$ (Phospho Thr287) protein detects endogenous levels of CaMKII $\beta/\gamma/\delta$ (Phospho Thr287)
Formulation :	Liquid in PBS containing 50% glycerol, 0.5% BSA and 0.02% sodium azide.
Source :	Mouse
Dilution :	IHC 1:100-200
Purification :	The antibody was affinity-purified from mouse ascites by affinity-chromatography using specific immunogen.
Concentration :	1 mg/ml
Storage_stability :	-20°C/1 year
Other_name :	CAMK2B; CAM2; CAMK2; CAMKB; Calcium/calmodulin-dependent protein kinase type II subunit beta; CaM kinase II subunit beta; CaMK-II subunit beta; CAMK2G; CAMK; CAMK-II; CAMKG; Calcium/calmodulin-dependent protein kinase type II subunit gamma;
Molecular Weight :	50KD

Product Images



Immunohistochemical analysis of paraffin-embedded Rat Brain Tissue using CaMKII $\beta/\gamma/\delta$ (Phospho Thr287) (mAb diluted at 1:200).



Immunohistochemical analysis of paraffin-embedded Mouse Brain Tissue using CaMKII $\beta/\gamma/\delta$ (Phospho Thr287) Mouse mAb diluted at 1:200.