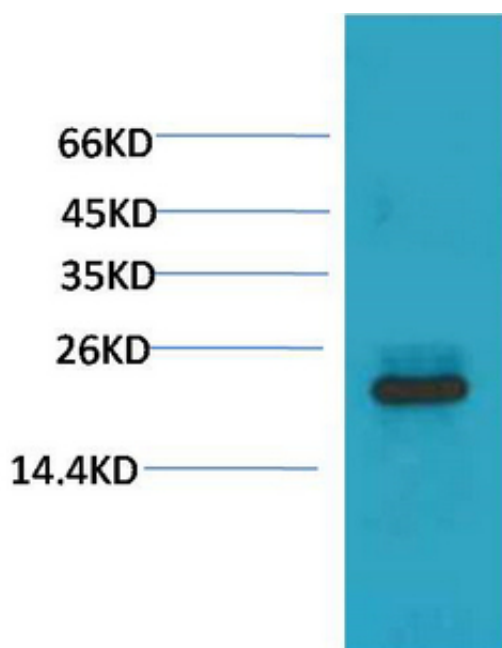




## HSPB8/HSP22 Monoclonal Antibody(2C3)

Catalog_no :	AM3525
Applications :	WB
Reactivity :	Human,Rat,Mouse
Category :	抗原抗体
Size :	100µg/50µg
Gene_name :	HSPB8
Protein_name :	Heat shock protein beta-8 (HspB8) (Alpha-crystallin C chain) (E2-induced gene 1 protein) (Protein kinase H11) (Small stress protein-like protein HSP22)
Humangene_id :	<a href="#">26353</a>
Humanswissprot_no :	<a href="#">Q9UJY1</a>
Immunogen :	Recombinant Protein of HSPB8/HSP22
Specificity :	HSPB8/HSP22 protein detects endogenous levels of HSPB8/HSP22
Formulation :	Liquid in PBS containing 50% glycerol, 0.5% BSA and 0.02% sodium azide.
Source :	Mouse
Dilution :	WB 1:1000-2000
Purification :	The antibody was affinity-purified from mouse ascites by affinity-chromatography using specific immunogen.
Concentration :	1 mg/ml
Storage_stability :	-20°C/1 year
Other_name :	HSPB8; CRYAC; E2IG1; HSP22; PP1629; Heat shock protein beta-8; HspB8; Alpha-crystallin C chain; E2-induced gene 1 protein; Protein kinase H11; Small stress protein-like protein HSP22
Molecular Weight :	22KD

## Product Images



Western blot analysis of 293T with HSPB8/HSP22 Mouse mAb diluted at 1:2,000.