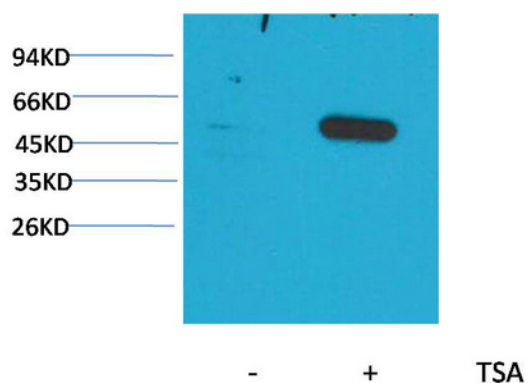


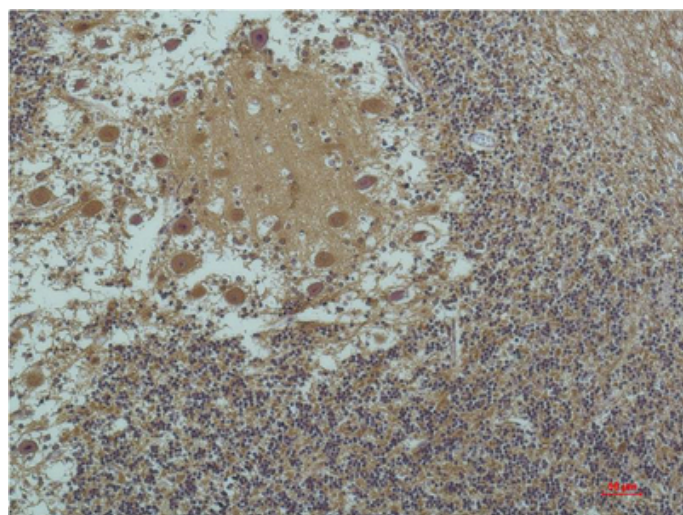
## $\alpha$ -tubulin (Acetyl Lys40) Monoclonal Antibody(5H5)

Catalog_no :	AM3585
Applications :	WB,IHC-p
Reactivity :	Human,Rat,Mouse
Category :	抗原抗体
Size :	100 $\mu$ g/50 $\mu$ g
Gene_name :	TUBA1B
Protein_name :	Tubulin alpha-1B chain (Alpha-tubulin ubiquitous) (Tubulin K-alpha-1) (Tubulin alpha-ubiquitous chain)
Humangene_id :	<a href="#">7277</a>
Humanswissprot_no :	<a href="#">P68363</a>
Immunogen :	Synthetic Peptide of $\alpha$ -tubulin (Acetyl Lys40)
Specificity :	$\alpha$ -tubulin (Acetyl Lys40) protein detects endogenous levels of $\alpha$ -tubulin (Acetyl Lys40)
Formulation :	Liquid in PBS containing 50% glycerol, 0.5% BSA and 0.02% sodium azide.
Source :	Mouse
Dilution :	WB 1:1000-2000, IHC 1:100-200
Purification :	The antibody was affinity-purified from mouse ascites by affinity-chromatography using specific immunogen.
Concentration :	1 mg/ml
Storage_stability :	-20°C/1 year
Other_name :	Tubulin alpha-1B chain (Alpha-tubulin ubiquitous) (Tubulin K-alpha-1) (Tubulin alpha-ubiquitous chain)
Molecular Weight :	52KD

## Product Images



Western blot analysis of extracts from HeLa cells, untreated (-) or treated with TSA (1 $\mu$ M, 18 hr; +), using Acetyl- $\alpha$ -tubulin(Lys40) Mouse mAb 1:2000.



Immunohistochemical analysis of paraffin-embedded Human Brain Tissue using  $\alpha$ -tubulin(Acetyl Lys40) Mouse mAb diluted at 1:200.