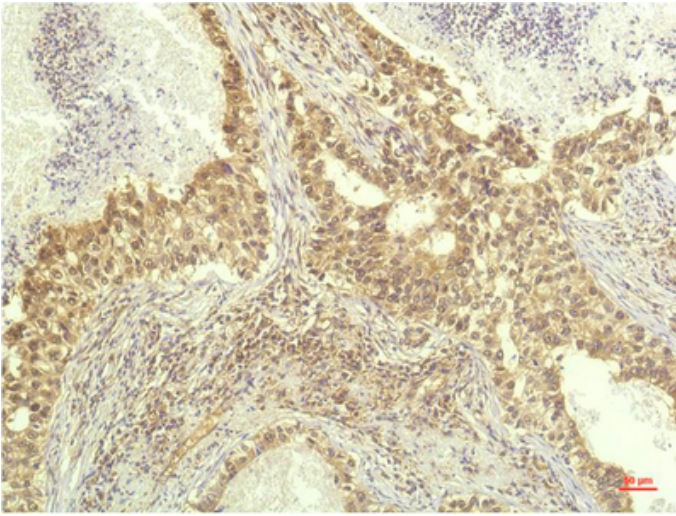




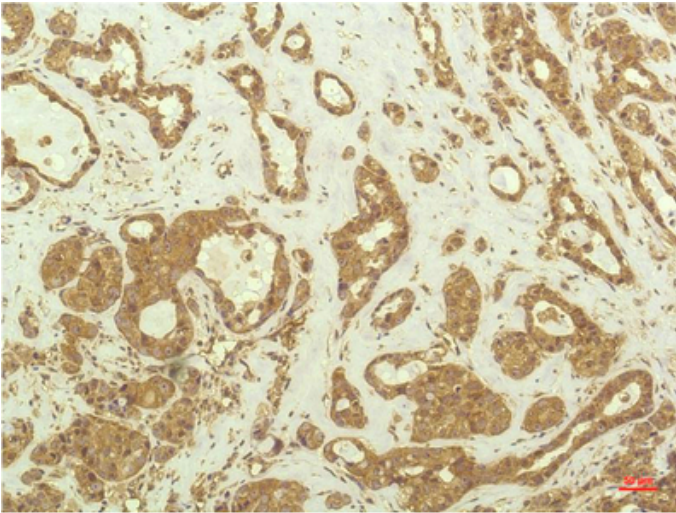
P70 S6 Kinase mouse Monoclonal Antibody(1C7)

Catalog_no :	AM3602
Applications :	IHC-p
Reactivity :	Human,Rat,Mouse
Category :	抗原抗体
Size :	100µg/50µg
Gene_name :	RPS6KB1
Protein_name :	RPS6KB1
Humangene_id	6198
:	
Humanswissprot	P23443
_no :	
Immunogen :	Recombinant Protein of P70 S6 Kinase of RPS6KB1
Specificity :	P70 S6 Kinase protein detects endogenous levels of RPS6KB1
Formulation :	Liquid in PBS containing 50% glycerol, 0.5% BSA and 0.02% sodium azide.
Source :	Mouse
Dilution :	IHC 1:100-200
Purification :	The antibody was affinity-purified from mouse ascites by affinity-chromatography using specific immunogen.
Concentration :	1 mg/ml
Storage_stability	-20°C/1 year
:	
Msds :	MSDS_Antibody.pdf
Other_name :	RPS6KB1
Molecular Weight :	70KD,85KD

Product Images



Immunohistochemical analysis of paraffin-embedded Human Lung Carcinoma Tissue using P70 S6 Kinase Mouse mAb diluted at 1:200.



Immunohistochemical analysis of paraffin-embedded Human Breast Carcinoma Tissue using P70 S6 Kinase Mouse mAb diluted at 1:200.