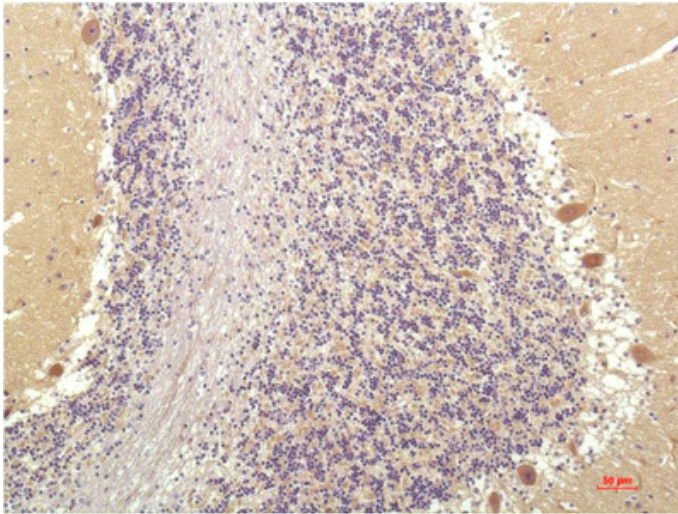


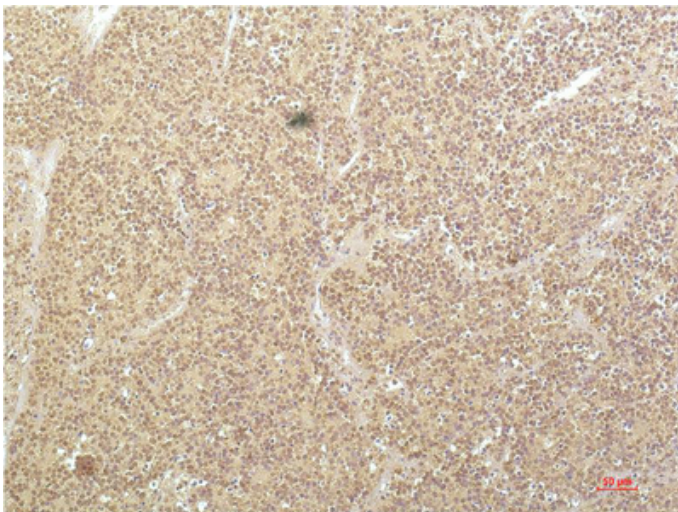
SGK1 mouse Monoclonal Antibody(4D12)

Catalog_no :	AM3615
Applications :	IHC-p
Reactivity :	Human,Rat,Mouse
Category :	抗原抗体
Size :	100µg/50µg
Gene_name :	SGK1
Protein_name :	SGK1
Humangene_id :	6446
Humanswissprot_no :	O00141
Immunogen :	Synthetic Peptide of SGK1 at AA range of 350-430
Specificity :	SGK1 protein detects endogenous levels of SGK1
Formulation :	Liquid in PBS containing 50% glycerol, 0.5% BSA and 0.02% sodium azide.
Source :	Mouse
Dilution :	IHC 1:100-200
Purification :	The antibody was affinity-purified from mouse ascites by affinity-chromatography using specific immunogen.
Concentration :	1 mg/ml
Storage_stability :	-20°C/1 year
Msds :	MSDS_Antibody.pdf
Other_name :	SGK1
Molecular Weight :	45-60KD

Product Images



Immunohistochemical analysis of paraffin-embedded Human Brain Tissue using SGK1 Mouse mAb diluted at 1:200.



Immunohistochemical analysis of paraffin-embedded Human Kidney Carcinoma Tissue using SGK1 Mouse mAb diluted at 1:200.