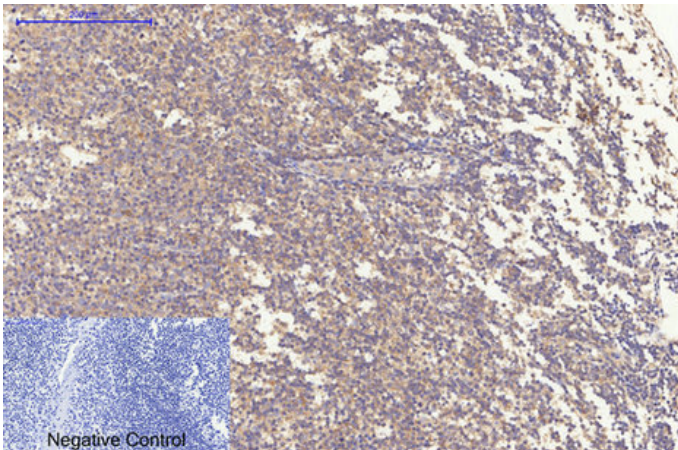




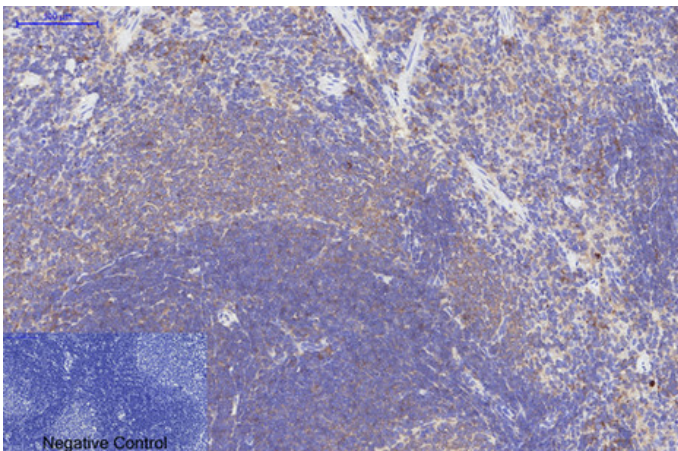
Bax mouse Monoclonal Antibody(6F11)

Catalog_no :	AM3619
Applications :	IF,WB,IHC-p
Reactivity :	Human,Rat,Mouse,Chicken
Category :	抗原抗体
Size :	100µg/50µg
Gene_name :	BAX
Protein_name :	BAX
Humangene_id :	581
Humanswissprot_no :	Q07812
Immunogen :	Synthetic Peptide of Bax at AA range of 30-110
Specificity :	Bax protein detects endogenous levels of BAX
Formulation :	Liquid in PBS containing 50% glycerol, 0.5% BSA and 0.02% sodium azide.
Source :	Mouse
Dilution :	IF: 1:50-200 WB 1:1000-2000, IHC 1:100-200
Purification :	The antibody was affinity-purified from mouse ascites by affinity-chromatography using specific immunogen.
Concentration :	1 mg/ml
Storage_stability :	-20°C/1 year
Msds :	MSDS_Antibody.pdf
Other_name :	BAX
Molecular Weight :	20KD

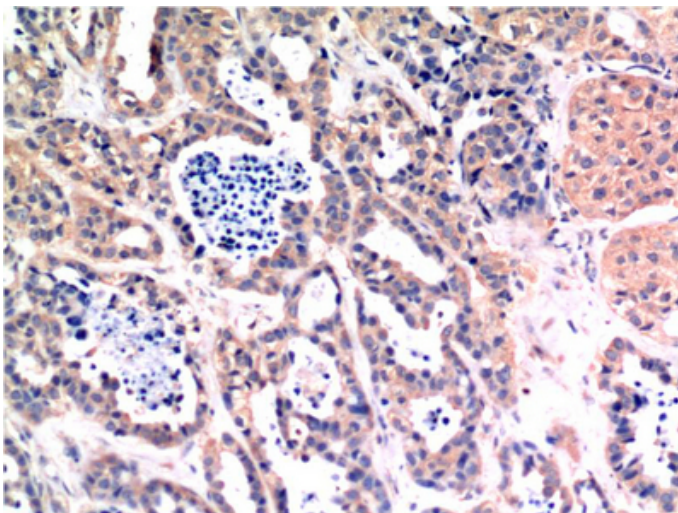
Product Images



Immunohistochemical analysis of paraffin-embedded Human-Tonsil tissue. 1, Bax Mouse Monoclonal Antibody(6F11) was diluted at 1:200(4°C, overnight). 2, Sodium citrate pH 6.0 was used for antibody retrieval(>98°C, 20min). 3, Secondary antibody was diluted at 1:200(room temperature, 30min). Negative control was used by secondary antibody only.

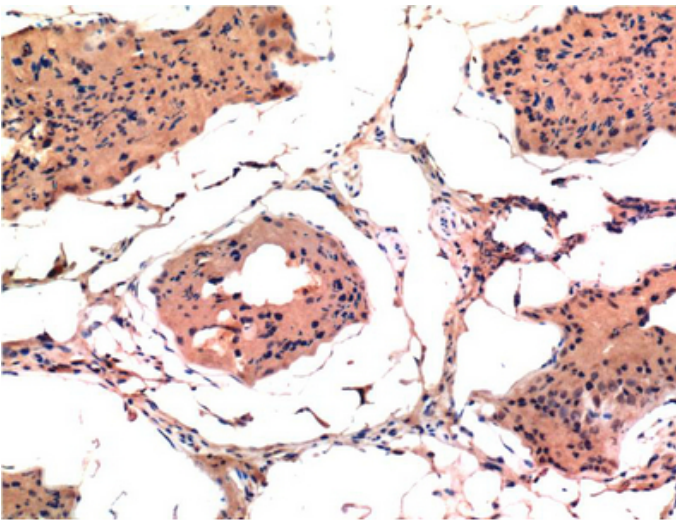
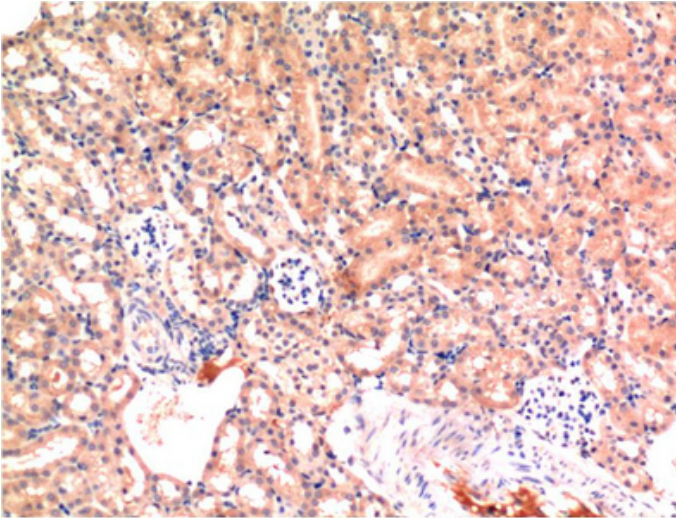


Immunohistochemical analysis of paraffin-embedded Rat-spleen tissue. 1, Bax Mouse Monoclonal Antibody(6F11) was diluted at 1:200(4°C, overnight). 2, Sodium citrate pH 6.0 was used for antibody retrieval(>98°C, 20min). 3, Secondary antibody was diluted at 1:200(room temperature, 30min). Negative control was used by secondary antibody only.

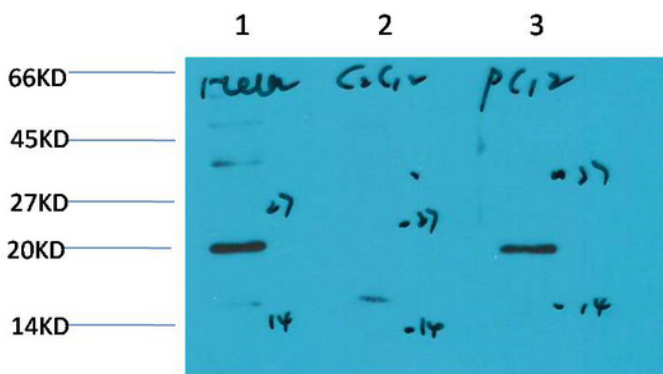


Immunohistochemical analysis of paraffin-embedded Human Breast Carcinoma Tissue using Bax Mouse mAb diluted at 1:200.

Immunohistochemical analysis of paraffin-embedded Mouse Kidney Tissue using Bax Mouse mAb diluted at 1:200.

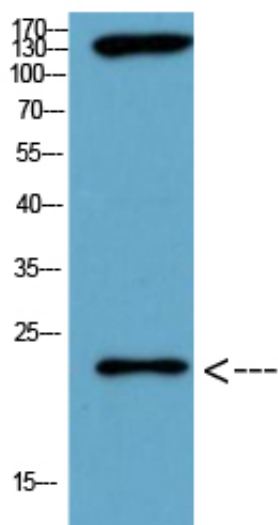


Immunohistochemical analysis of paraffin-embedded Rat Testis Tissue using Bax Mouse mAb diluted at 1:200.



Western blot analysis of 1) HeLa Cell Lysate, 2) C2C12 Cell Lysate, 3) PC12 Cell Lysate using Bax Mouse mAb diluted at 1:1000.

Western Blot analysis of chicken cell lysis using Antibody diluted at 1:1000



chicken cell lysis