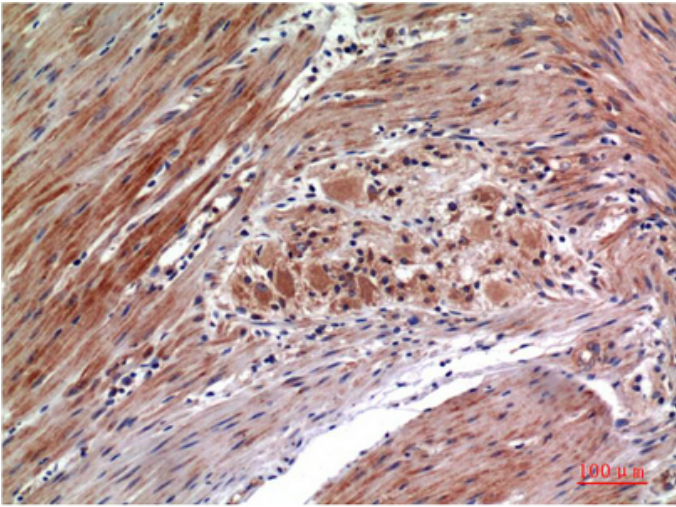




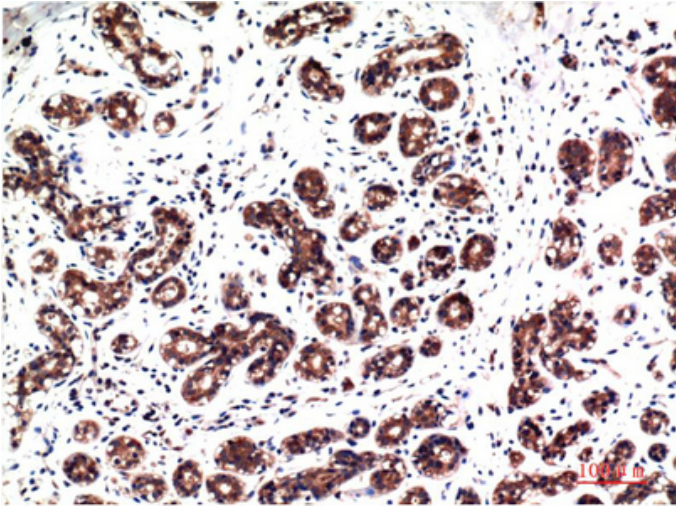
Phospho-ERK 1/2 (Y222/205) Mouse Monoclonal Antibody(4G3)

Catalog_no :	AM3632
Applications :	IHC-p
Reactivity :	Human,Rat,Mouse
Category :	抗原抗体
Size :	100µg/50µg
Gene_name :	MAPK1/MAPK3
Protein_name :	MAPK1/MAPK3
Humangene_id :	5594/5595
Humanswissprot_no :	P27361/P28482
Immunogen :	Synthetic Peptide of Phospho-ERK 1/2 (Y222/205) at AA range of 140-220
Specificity :	Phospho-ERK 1/2 (Y222/205)protein detects endogenous levels of MAPK1/MAPK3
Formulation :	Liquid in PBS containing 50% glycerol, 0.5% BSA and 0.02% sodium azide.
Source :	Mouse
Dilution :	IHC 1:100-200
Purification :	The antibody was affinity-purified from mouse ascites by affinity-chromatography using specific immunogen.
Concentration :	1 mg/ml
Storage_stability :	-20°C/1 year
Msds :	MSDS_Antibody.pdf
Other_name :	MAPK1/MAPK3
Molecular Weight :	44KD,42KD

Product Images



Immunohistochemical analysis of paraffin-embedded Human Colon Carcinoma Tissue using Phospho-ERK1/2 Y222/205 Mouse mAb diluted at 1:200



Immunohistochemical analysis of paraffin-embedded Human Breast Carcinoma Tissue using Phospho-ERK1/2 Y222/205 Mouse mAb diluted at 1:200.