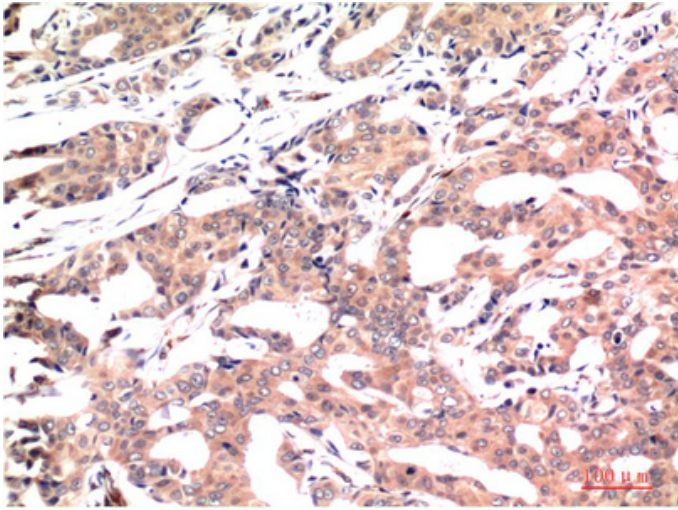




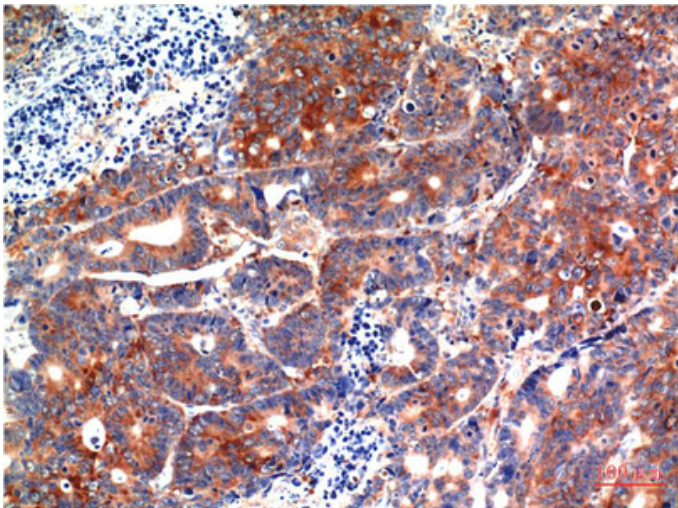
## GSK3β mouse Monoclonal Antibody(1A6)

|                     |  |
|---------------------|--|
| Catalog_no :        | AM3633   |
| Applications :      | WB,IHC-p   |
| Reactivity :        | Human,Rat,Mouse  |
| Category :          | 抗原抗体   |
| Size :              | 100μg/50μg   |
| Gene_name :         | GSK3B  |
| Protein_name :      | GSK3B  |
| Humangene_id :      | <a href="#">2932</a>   |
| Humanswissprot_no : | <a href="#">P49841</a>   |
| Immunogen :         | Synthetic Peptide of GSK3β at AA range of 1-80   |
| Specificity :       | GSK3β protein detects endogenous levels of GSK3B   |
| Formulation :       | Liquid in PBS containing 50% glycerol, 0.5% BSA and 0.02% sodium azide.                                    |
| Source :            | Mouse  |
| Dilution :          | WB 1:1000-2000, IHC 1:100-200  |
| Purification :      | The antibody was affinity-purified from mouse ascites by affinity-chromatography using specific immunogen. |
| Concentration :     | 1 mg/ml  |
| Storage_stability : | -20°C/1 year   |
| Msds :              | <a href="#">MSDS_Antibody.pdf</a>  |
| Other_name :        | GSK3B  |
| Molecular Weight :  | 46KD   |

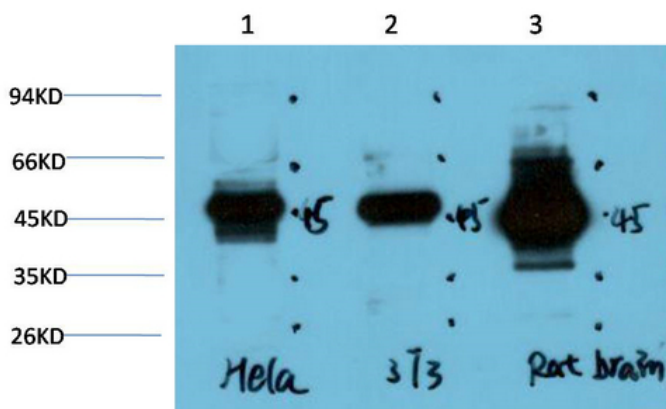
## Product Images



Immunohistochemical analysis of paraffin-embedded Human Breast Carcinoma Tissue using GSK3 $\beta$  Mouse mAb diluted at 1:200.



Immunohistochemical analysis of paraffin-embedded Human Stomach Carcinoma Tissue using GSK3 $\beta$  Mouse mAb diluted at 1:200.



Western blot analysis of 1) Hela Cell Lysate, 2) 3T3 Cell Lysate, 3) Rat Brain Tissue Lysate using GSK3 $\beta$  Mouse mAb diluted at 1:1000.