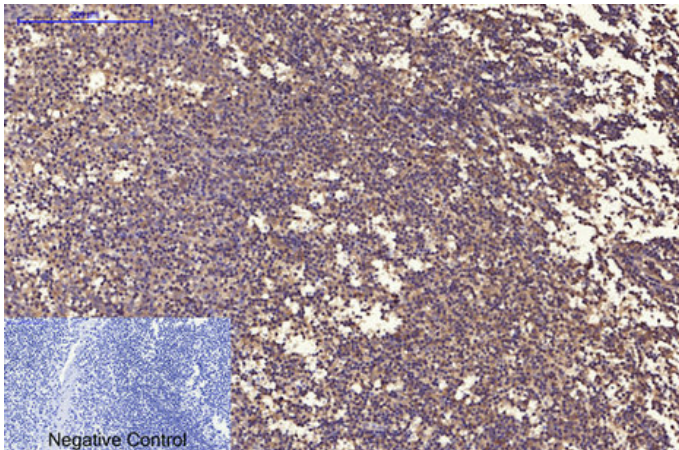




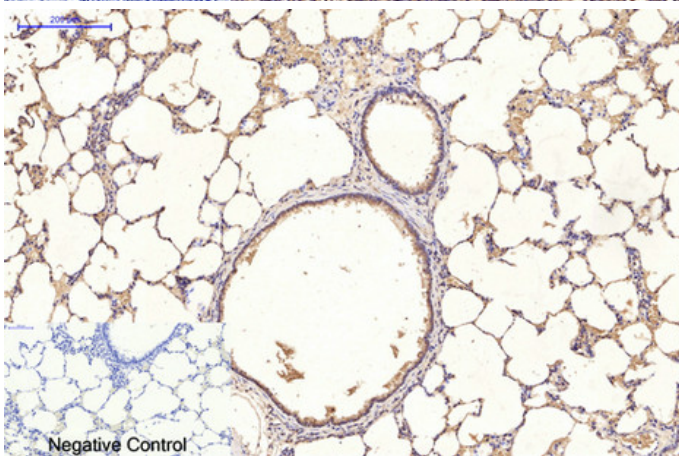
Ubiquitin mouse Monoclonal Antibody(5F1)

Catalog_no :	AM3636
Applications :	WB,IF,IHC-p
Reactivity :	Human,Rat,Mouse
Category :	抗原抗体
Size :	100µg/50µg
Protein_name :	Ubiquitin
Humangene_id :	7314
Humanswissprot_no :	PAN
Immunogen :	Synthetic Peptide of Ubiquitin
Specificity :	Ubiquitin protein detects endogenous levels of Ubiquitin
Formulation :	Liquid in PBS containing 50% glycerol, 0.5% BSA and 0.02% sodium azide.
Source :	Mouse
Dilution :	WB 1:1000-2000, IHC 1:100-200 IF 1:200
Purification :	The antibody was affinity-purified from mouse ascites by affinity-chromatography using specific immunogen.
Concentration :	1 mg/ml
Storage_stability :	-20°C/1 year
Msds :	MSDS_Antibody.pdf

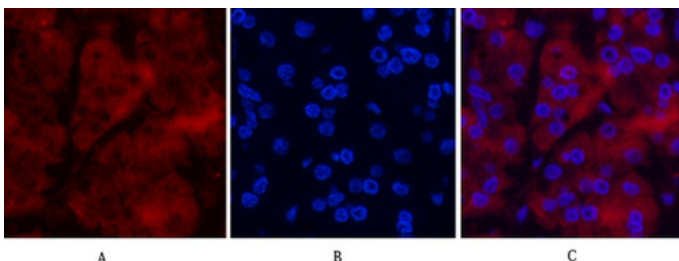
Product Images



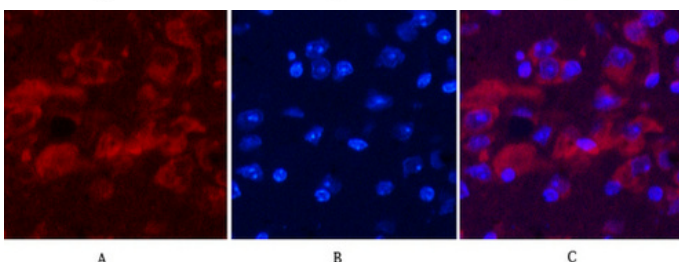
Immunohistochemical analysis of paraffin-embedded Human-Tonsil tissue. 1, Ubiquitin Mouse Monoclonal Antibody(5F1) was diluted at 1:200(4°C, overnight). 2, Sodium citrate pH 6.0 was used for antibody retrieval(>98°C, 20min). 3, Secondary antibody was diluted at 1:200(room temperature, 30min). Negative control was used by secondary antibody only.



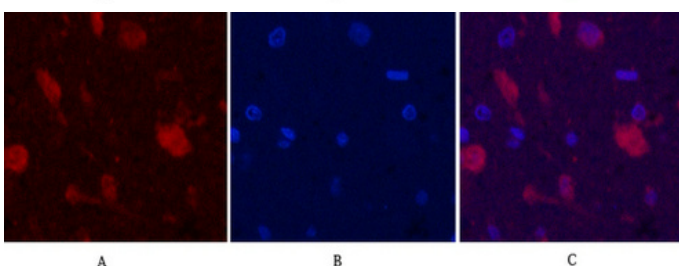
Immunohistochemical analysis of paraffin-embedded Rat-lung tissue. 1, Ubiquitin Mouse Monoclonal Antibody(5F1) was diluted at 1:200(4°C, overnight). 2, Sodium citrate pH 6.0 was used for antibody retrieval(>98°C, 20min). 3, Secondary antibody was diluted at 1:200(room temperature, 30min). Negative control was used by secondary antibody only.



Immunofluorescence analysis of Human-stomach-cancer tissue. 1, Ubiquitin Mouse Monoclonal Antibody(5F1)(red) was diluted at 1:200(4°C, overnight). 2, Cy3 labeled Secondary antibody was diluted at 1:300(room temperature, 50min). 3, Picture B: DAPI(blue) 10min. Picture A: Target. Picture B: DAPI. Picture C: merge of A+B

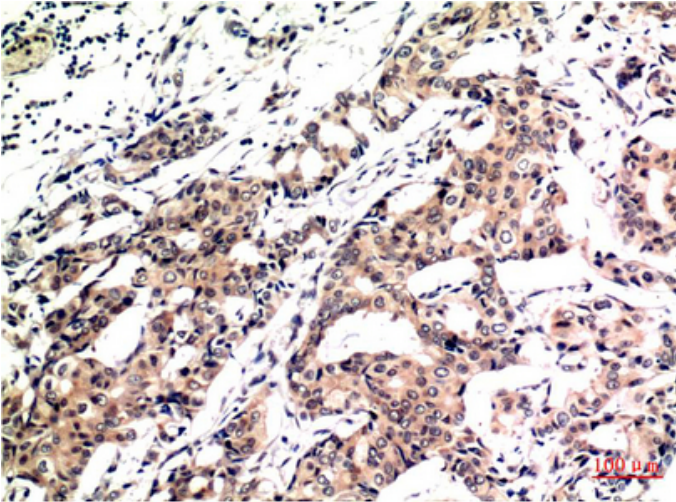


Immunofluorescence analysis of Mouse-brain tissue. 1, Ubiquitin Mouse Monoclonal Antibody(5F1)(red) was diluted at 1:200(4°C, overnight). 2, Cy3 labeled Secondary antibody was diluted at 1:300(room temperature, 50min). 3, Picture B: DAPI(blue) 10min. Picture A: Target. Picture B: DAPI. Picture C: merge of A+B

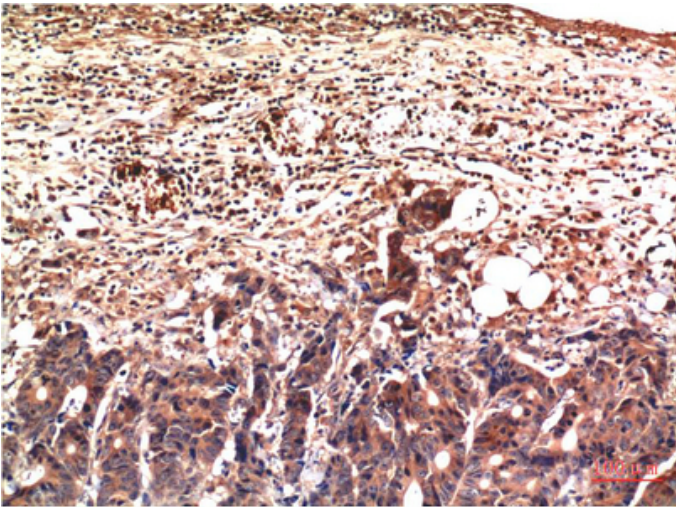


Immunofluorescence analysis of Rat-brain tissue. 1, Ubiquitin Mouse Monoclonal Antibody(5F1)(red) was diluted at 1:200(4°C, overnight). 2, Cy3 labeled Secondary antibody was diluted at 1:300(room temperature, 50min). 3, Picture B: DAPI(blue) 10min. Picture A: Target. Picture B: DAPI. Picture C: merge of A+B

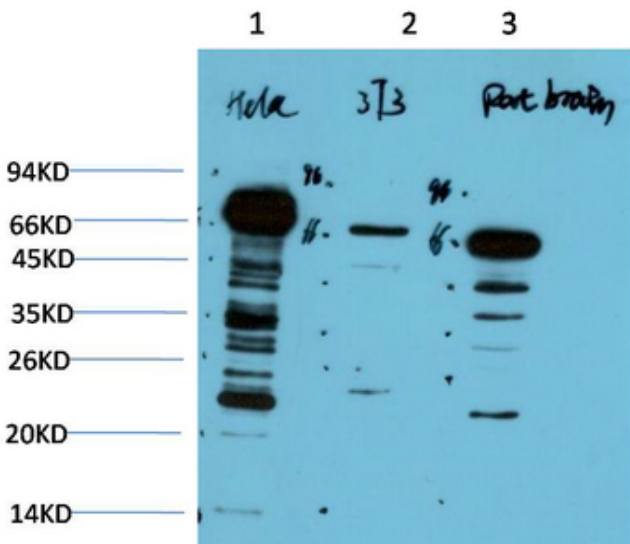
Immunohistochemical analysis of paraffin-embedded



Human Breast Carcinoma Tissue using Ubiquitin Mouse mAb diluted at 1:200.



Immunohistochemical analysis of paraffin-embedded Human Stomach Carcinoma Tissue using Ubiquitin Mouse mAb diluted at 1:200.



Western blot analysis of 1) HeLa Cell Lysate, 2) 3T3 Cell Lysate, 3) Rat Brain Tissue Lysate using Ubiquitin Mouse mAb diluted at 1:1000.