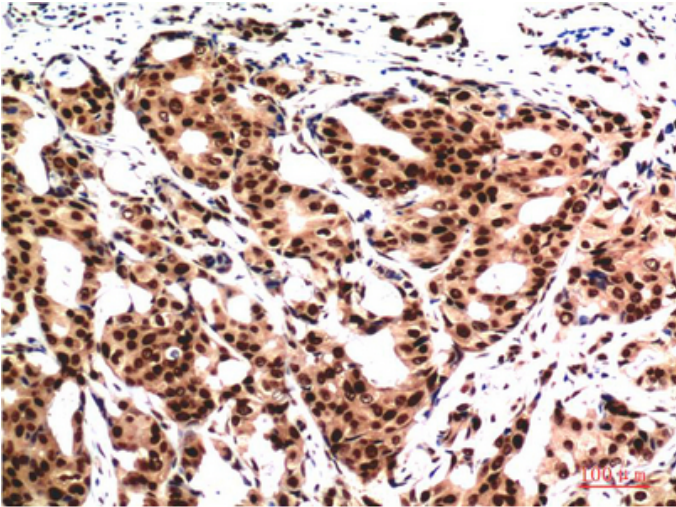


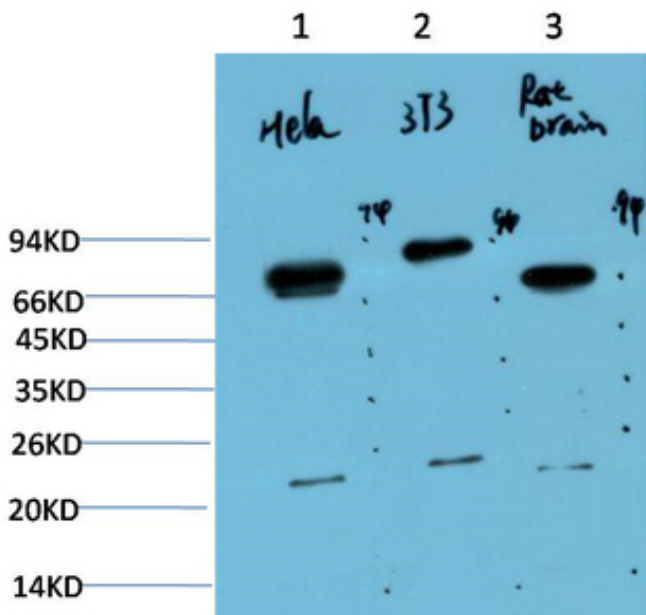
## Ubiquitin mouse Monoclonal Antibody(6G6)

Catalog_no :	<u>AM3647</u>
Applications :	<u>WB,IHC-p</u>
Reactivity :	<u>Human,Rat,Mouse</u>
Category :	<u>抗原抗体</u>
Size :	<u>100µg/50µg</u>
Protein_name :	<u>Ubiquitin</u>
Humangene_id :	<u><a href="#">7314</a></u>
Humanswissprot_no :	<u><a href="#">PAN</a></u>
Immunogen :	<u>Synthetic Peptide of Ubiquitin</u>
Specificity :	<u>Ubiquitin protein detects endogenous levels of Ubiquitin</u>
Formulation :	<u>Liquid in PBS containing 50% glycerol, 0.5% BSA and 0.02% sodium azide.</u>
Source :	<u>Mouse</u>
Dilution :	<u>WB 1:1000-2000, IHC 1:100-200</u>
Purification :	<u>The antibody was affinity-purified from mouse ascites by affinity-chromatography using specific immunogen.</u>
Concentration :	<u>1 mg/ml</u>
Storage_stability :	<u>-20°C/1 year</u>
Msds :	<u>MSDS_Antibody.pdf</u>

## Product Images



Immunohistochemical analysis of paraffin-embedded Human Breast Carcinoma Tissue using Ubiquitin Mouse mAb diluted at 1:200.



Western blot analysis of 1) HeLa Cell Lysate, 2) 3T3 Cell Lysate, 3) Rat Brain Tissue Lysate using Ubiquitin Mouse mAb diluted at 1:1000.