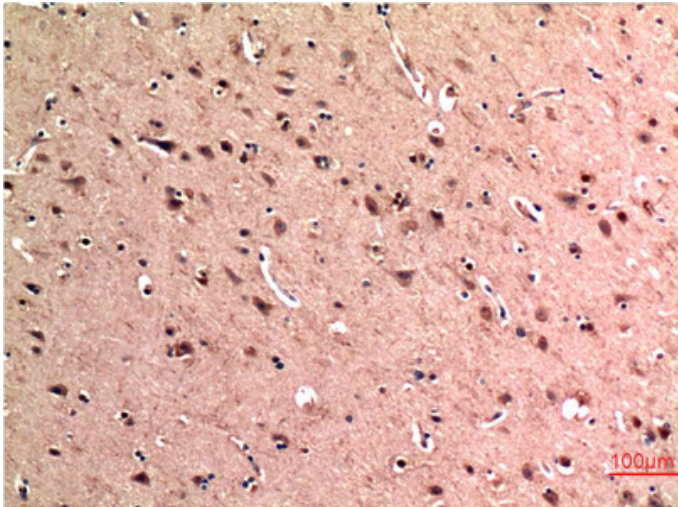




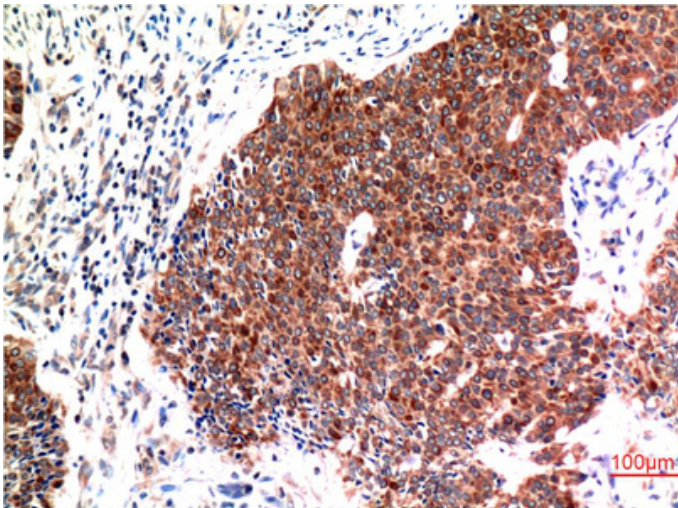
## Beclin-1 mouse Monoclonal Antibody(5C2)

Catalog_no :	AM3655
Applications :	WB,IHC-p
Reactivity :	Human,Rat,Mouse
Category :	抗原抗体
Size :	100µg/50µg
Gene_name :	BECN1
Protein_name :	BECN1
Humangene_id :	<a href="#">8678</a>
Humanswissprot_no :	<a href="#">Q14457</a>
Immunogen :	Synthetic Peptide of Beclin-1 at AA range of 110-190
Specificity :	Beclin-1 protein detects endogenous levels of BECN1
Formulation :	Liquid in PBS containing 50% glycerol, 0.5% BSA and 0.02% sodium azide.
Source :	Mouse
Dilution :	WB 1:1000-2000, IHC 1:100-200
Purification :	The antibody was affinity-purified from mouse ascites by affinity-chromatography using specific immunogen.
Concentration :	1 mg/ml
Storage_stability :	-20°C/1 year
Msds :	<a href="#">MSDS_Antibody.pdf</a>
Other_name :	BECN1
Molecular Weight :	60KD

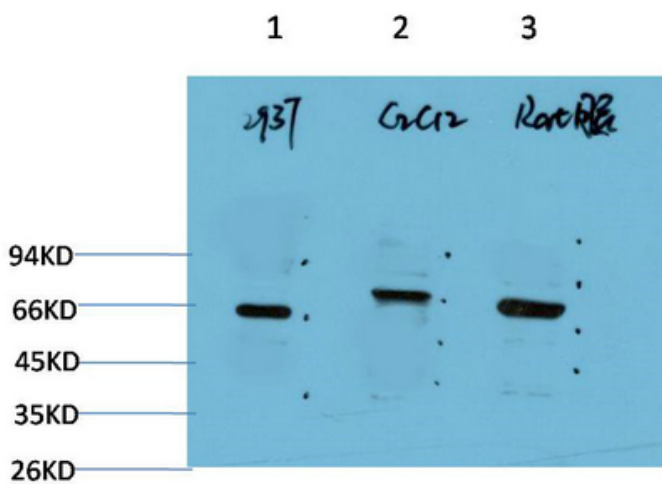
## Product Images



Immunohistochemical analysis of paraffin-embedded Human Brain Tissue using Beclin-1 Mouse mAb diluted at 1:200.



Immunohistochemical analysis of paraffin-embedded Human Breast Carcinoma Tissue using Beclin-1 Mouse mAb diluted at 1:200.



Western blot analysis of 1) 293T Cell Lysate, 2) C2C12 Cell Lysate, 3) Rat Brain Tissue Lysate using Beclin-1 Mouse mAb diluted at 1:2000.