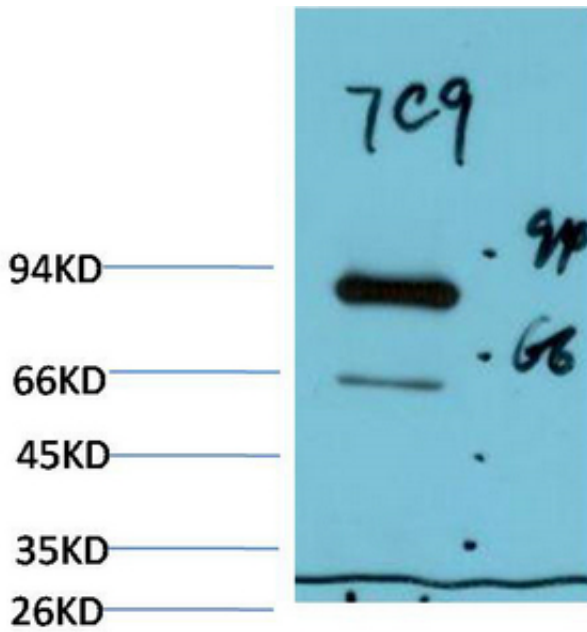




## Luciferase mouse Monoclonal Antibody(7C9)

Catalog_no :	AM3657
Applications :	WB
Reactivity :	Firefly
Category :	抗原抗体
Size :	100µg/50µg
Protein_name :	Luciferase
Humanswissprot _no :	<a href="#">P08659</a>
Immunogen :	Synthetic Peptide of Luciferase
Specificity :	Luciferase protein detects endogenous levels of Luciferase
Formulation :	Liquid in PBS containing 50% glycerol, 0.5% BSA and 0.02% sodium azide.
Source :	Mouse
Dilution :	WB 1:1000-2000
Purification :	The antibody was affinity-purified from mouse ascites by affinity-chromatography using specific immunogen.
Concentration :	1 mg/ml
Storage_stability :	-20°C/1 year
Msds :	MSDS_Antibody.pdf
Molecular Weight :	60KD

## Product Images



Western blot analysis of Firefly Luciferase Transfected Hela Cell Lysate using Luciferase Mouse mAb diluted at 1:2000.