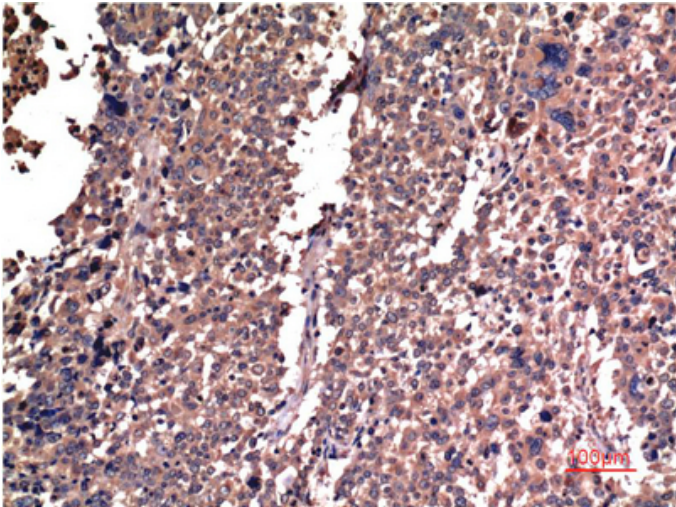




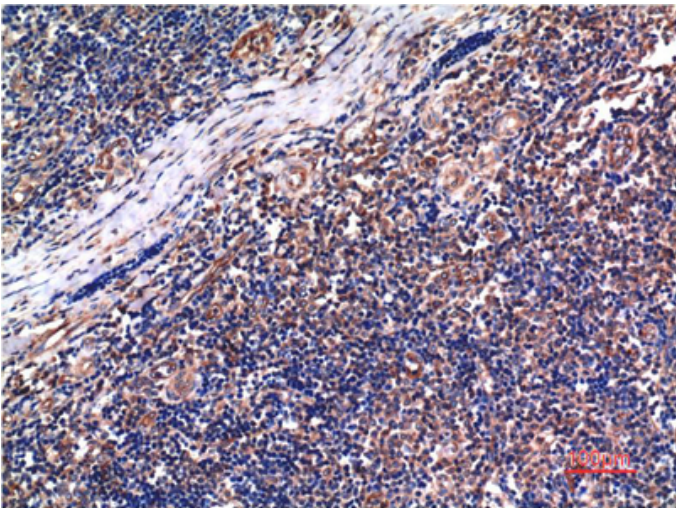
Cyclin B1 mouse Monoclonal Antibody(5C1)

Catalog_no :	AM3661
Applications :	IHC-p
Reactivity :	Human,Rat,Mouse
Category :	抗原抗体
Size :	100µg/50µg
Gene_name :	CCNB1
Protein_name :	CCNB1
Humangene_id :	891
Humanswissprot_no :	P14635
Immunogen :	Synthetic Peptide of Cyclin B1 at AA range of 60-140
Specificity :	Cyclin B1 protein detects endogenous levels of CCNB1
Formulation :	Liquid in PBS containing 50% glycerol, 0.5% BSA and 0.02% sodium azide.
Source :	Mouse
Dilution :	IHC 1:100-200
Purification :	The antibody was affinity-purified from mouse ascites by affinity-chromatography using specific immunogen.
Concentration :	1 mg/ml
Storage_stability :	-20°C/1 year
Msds :	MSDS_Antibody.pdf
Other_name :	CCNB1
Molecular Weight :	55KD

Product Images



Immunohistochemical analysis of paraffin-embedded Human Lung Carcinoma Tissue using Cyclin B1 Mouse mAb diluted at 1:200.



Immunohistochemical analysis of paraffin-embedded Human Tonsil Tissue using Cyclin B1 Mouse mAb diluted at 1:200.