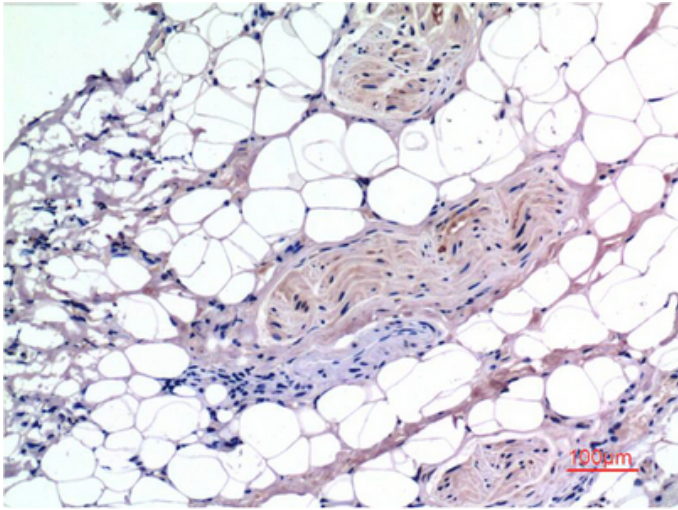




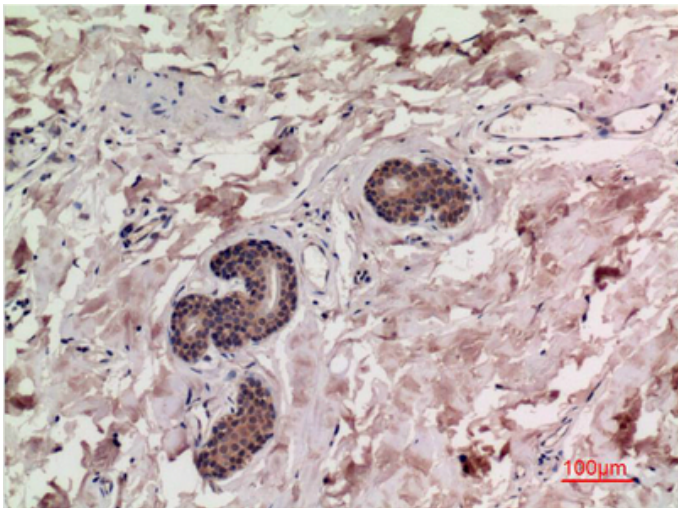
## Smad3 mouse Monoclonal Antibody(4C9)

Catalog_no :	AM3666
Applications :	WB,IHC-p
Reactivity :	Human,Rat,Mouse
Category :	抗原抗体
Size :	100µg/50µg
Gene_name :	SMAD3
Protein_name :	SMAD3
Humangene_id :	<a href="#">4088</a>
Humanswissprot_no :	<a href="#">P84022</a>
Immunogen :	Synthetic Peptide of Smad3 at AA range of 350-430
Specificity :	Smad3 protein detects endogenous levels of SMAD3
Formulation :	Liquid in PBS containing 50% glycerol, 0.5% BSA and 0.02% sodium azide.
Source :	Mouse
Dilution :	WB 1:1000-2000, IHC 1:100-200
Purification :	The antibody was affinity-purified from mouse ascites by affinity-chromatography using specific immunogen.
Concentration :	1 mg/ml
Storage_stability :	-20°C/1 year
Msds :	<a href="#">MSDS_Antibody.pdf</a>
Other_name :	SMAD3
Molecular Weight :	52KD

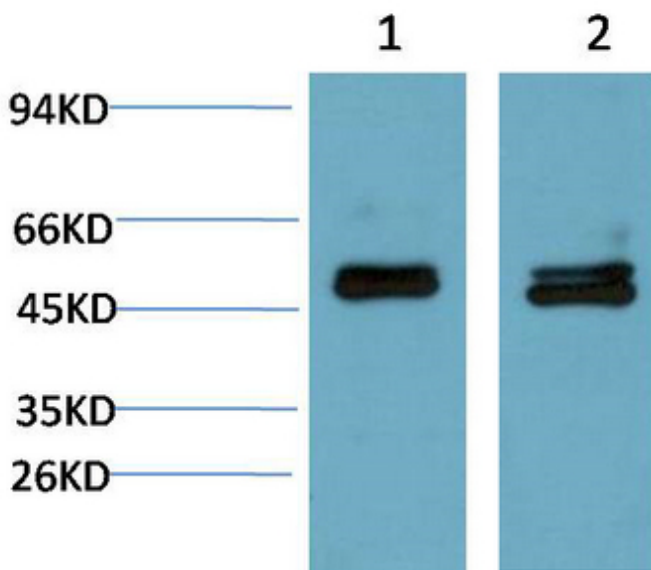
## Product Images



Immunohistochemical analysis of paraffin-embedded Human Liver Carcinoma Tissue using Smad3 Mouse mAb diluted at 1:200.



Immunohistochemical analysis of paraffin-embedded Human Breast Carcinoma Tissue using Smad3 Mouse mAb diluted at 1:200.



Western blot analysis of 1) Mouse Brain Tissue Lysate, 2) Rat Brain Tissue Lysate using Smad3 Mouse mAb diluted at 1:2000.