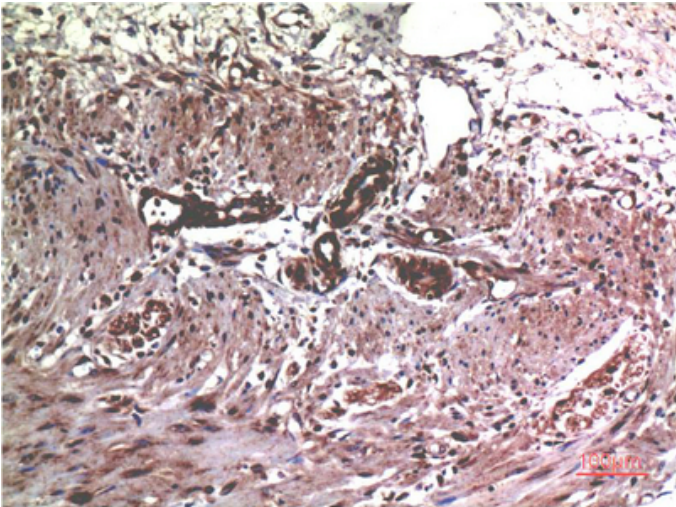




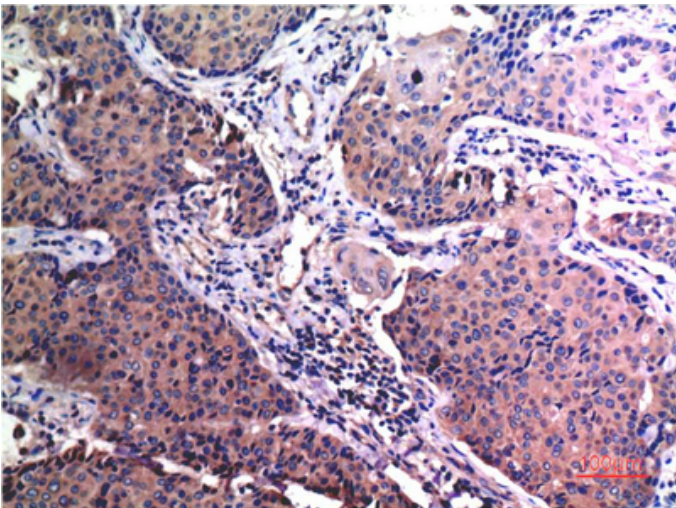
## MMP2 mouse Monoclonal Antibody(1H1)

Catalog_no :	AM3667
Applications :	IHC-p
Reactivity :	Human,Rat,Mouse
Category :	抗原抗体
Size :	100µg/50µg
Gene_name :	MMP2
Protein_name :	MMP2
Humangene_id :	<a href="#">4313</a>
Humanswissprot_no :	<a href="#">P08253</a>
Immunogen :	Synthetic Peptide of MMP2 at AA range of INTERNAL
Specificity :	MMP2 protein detects endogenous levels of MMP2
Formulation :	Liquid in PBS containing 50% glycerol, 0.5% BSA and 0.02% sodium azide.
Source :	Mouse
Dilution :	IHC 1:100-200
Purification :	The antibody was affinity-purified from mouse ascites by affinity-chromatography using specific immunogen.
Concentration :	1 mg/ml
Storage_stability :	-20°C/1 year
Msds :	<a href="#">MSDS_Antibody.pdf</a>
Other_name :	MMP2
Molecular Weight :	64 , 72KD

## Product Images



Immunohistochemical analysis of paraffin-embedded Human Colon Carcinoma Tissue using MMP2 Mouse mAb diluted at 1:200.



Immunohistochemical analysis of paraffin-embedded Human Breast Carcinoma Tissue using MMP2 Mouse mAb diluted at 1:200.