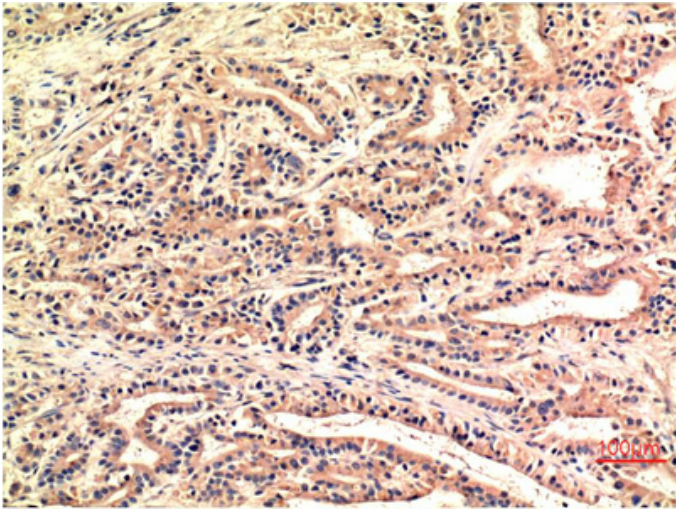




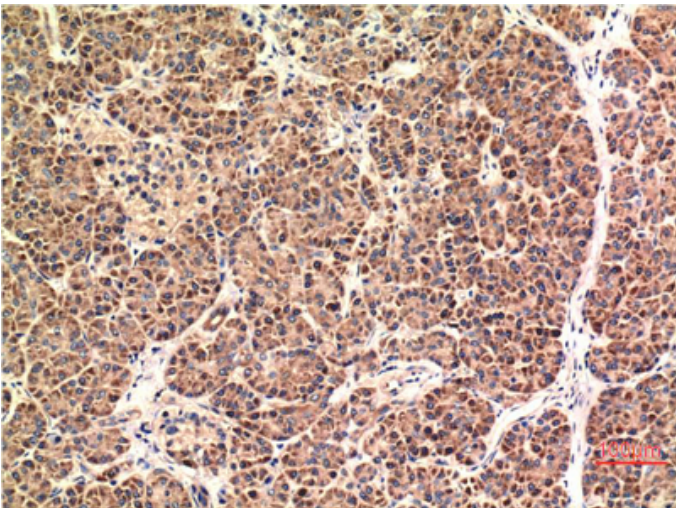
## CHOP mouse Monoclonal Antibody(1E1)

Catalog_no :	AM3669
Applications :	IHC-p
Reactivity :	Human,Rat,Mouse
Category :	抗原抗体
Size :	100µg/50µg
Gene_name :	DDIT3
Protein_name :	DDIT3
Humangene_id :	<a href="#">1649</a>
Humanswissprot_no :	<a href="#">P35638</a>
Immunogen :	Synthetic Peptide of CHOP at AA range of 10-90
Specificity :	CHOP protein detects endogenous levels of DDIT3
Formulation :	Liquid in PBS containing 50% glycerol, 0.5% BSA and 0.02% sodium azide.
Source :	Mouse
Dilution :	IHC 1:100-200
Purification :	The antibody was affinity-purified from mouse ascites by affinity-chromatography using specific immunogen.
Concentration :	1 mg/ml
Storage_stability :	-20°C/1 year
Msds :	<a href="#">MSDS_Antibody.pdf</a>
Other_name :	DDIT3
Molecular Weight :	27KD

## Product Images



Immunohistochemical analysis of paraffin-embedded Human Stomach Carcinoma Tissue using CHOP Mouse mAb diluted at 1:200.



Immunohistochemical analysis of paraffin-embedded Human Pancreas Carcinoma Tissue using CHOP Mouse mAb diluted at 1:200.