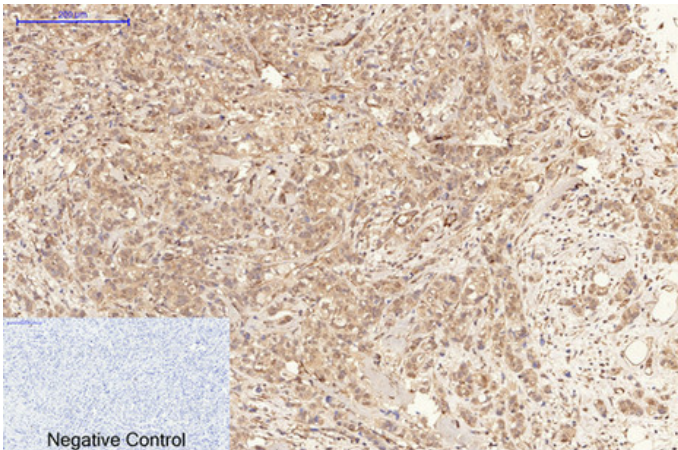




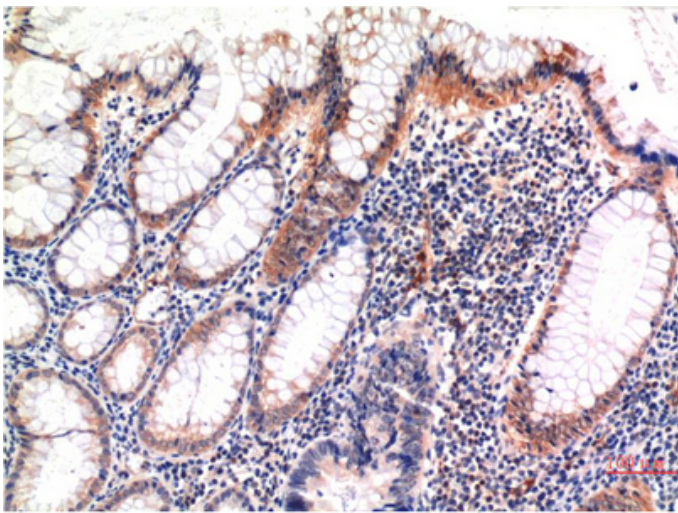
phospho-MLKL (S358) mouse Monoclonal Antibody(6F8)

| | |
|---------------------|--|
| Catalog_no : | AM3670 |
| Applications : | IF,IHC-p |
| Reactivity : | Human |
| Category : | 抗原抗体 |
| Size : | 100µg/50µg |
| Gene_name : | MLKL |
| Protein_name : | MLKL |
| Humangene_id : | 197259 |
| Humanswissprot_no : | Q8NB16 |
| Immunogen : | Synthetic Peptide of phospho-MLKL (S358) |
| Specificity : | phospho-MLKL (S358) protein detects endogenous levels of MLKL |
| Formulation : | Liquid in PBS containing 50% glycerol, 0.5% BSA and 0.02% sodium azide. |
| Source : | Mouse |
| Dilution : | IF: 1:50-200 IHC 1:100-200 |
| Purification : | The antibody was affinity-purified from mouse ascites by affinity-chromatography using specific immunogen. |
| Concentration : | 1 mg/ml |
| Storage_stability : | -20°C/1 year |
| Msds : | MSDS_Antibody.pdf |
| Other_name : | MLKL |
| Molecular Weight : | 54KD |

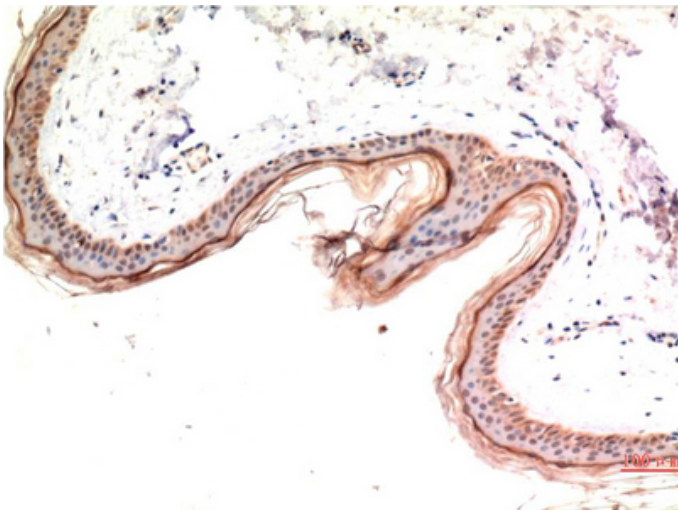
Product Images



Immunohistochemical analysis of paraffin-embedded Human-breast-cancer tissue. 1,phospho-MLKL (S358) Mouse Monoclonal Antibody(6F8) was diluted at 1:200(4°C,overnight). 2, Sodium citrate pH 6.0 was used for antibody retrieval(>98°C,20min). 3,Secondary antibody was diluted at 1:200(room temperature, 30min). Negative control was used by secondary antibody only.



Immunohistochemical analysis of paraffin-embedded Human Colon Carcinoma Tissue using Phospho-MLKL S358 Mouse mAb diluted at 1:200.



Immunohistochemical analysis of paraffin-embedded Human Skin Tissue using Phospho-MLKL S358 Mouse mAb diluted at 1:200.