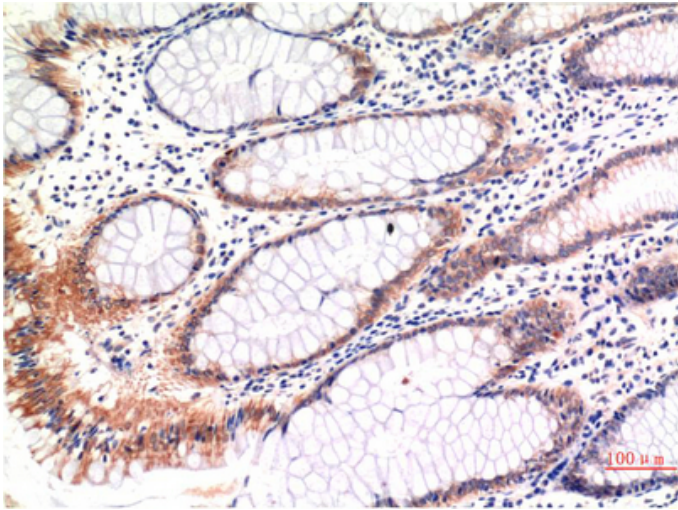




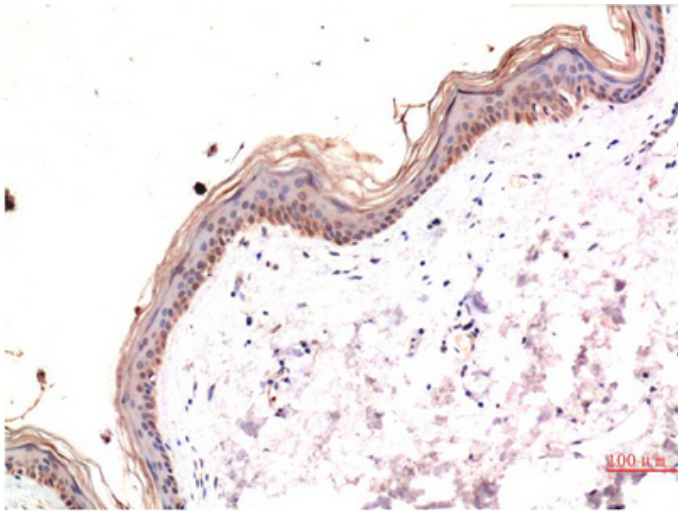
phospho-MLKL (S358) mouse Monoclonal Antibody(6B4)

Catalog_no :	AM3671
Applications :	IHC-p
Reactivity :	Human
Category :	抗原抗体
Size :	100µg/50µg
Gene_name :	MLKL
Protein_name :	MLKL
Humangene_id :	197259
Humanswissprot_no :	Q8NB16
Immunogen :	Synthetic Peptide of phospho-MLKL (S358)
Specificity :	phospho-MLKL (S358) protein detects endogenous levels of MLKL
Formulation :	Liquid in PBS containing 50% glycerol, 0.5% BSA and 0.02% sodium azide.
Source :	Mouse
Dilution :	IHC 1:100-200
Purification :	The antibody was affinity-purified from mouse ascites by affinity-chromatography using specific immunogen.
Concentration :	1 mg/ml
Storage_stability :	-20°C/1 year
Msds :	MSDS_Antibody.pdf
Other_name :	MLKL
Molecular Weight :	54KD

Product Images



Immunohistochemical analysis of paraffin-embedded Human Colon Carcinoma Tissue using Phospho-MLKL S358 Mouse mAb diluted at 1:200.



Immunohistochemical analysis of paraffin-embedded Human Skin Tissue using Phospho-MLKL S358 Mouse mAb diluted at 1:200.