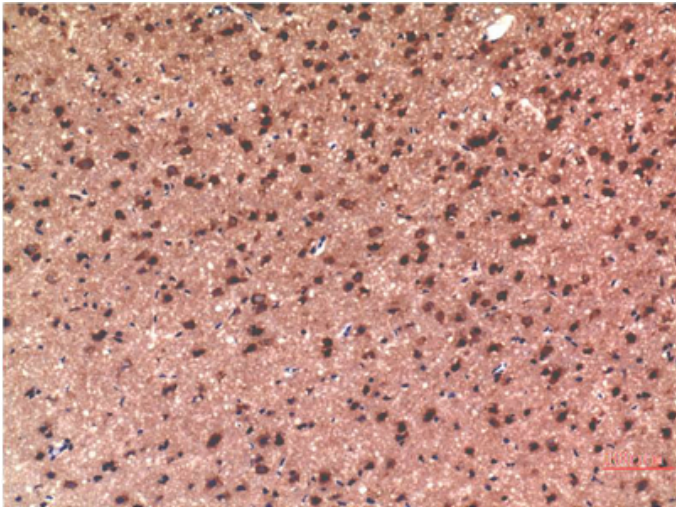


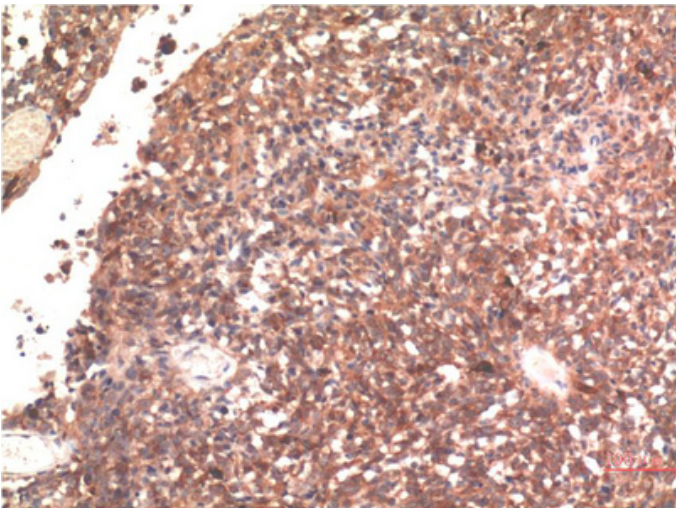
## Tau mouse Monoclonal Antibody(10E3)

Catalog_no :	AM3672
Applications :	WB,IHC-p
Reactivity :	Human,Rat,Mouse
Category :	抗原抗体
Size :	100µg/50µg
Gene_name :	MAPT
Protein_name :	MAPT
Humangene_id :	<a href="#">4137</a>
Humanswissprot_no :	<a href="#">P10636</a>
Immunogen :	Synthetic Peptide of Tau
Specificity :	Tau protein detects endogenous levels of MAPT
Formulation :	Liquid in PBS containing 50% glycerol, 0.5% BSA and 0.02% sodium azide.
Source :	Mouse
Dilution :	WB 1:1000-2000, IHC 1:100-200
Purification :	The antibody was affinity-purified from mouse ascites by affinity-chromatography using specific immunogen.
Concentration :	1 mg/ml
Storage_stability :	-20°C/1 year
Msds :	<a href="#">MSDS_Antibody.pdf</a>
Other_name :	MAPT
Molecular Weight :	79KD

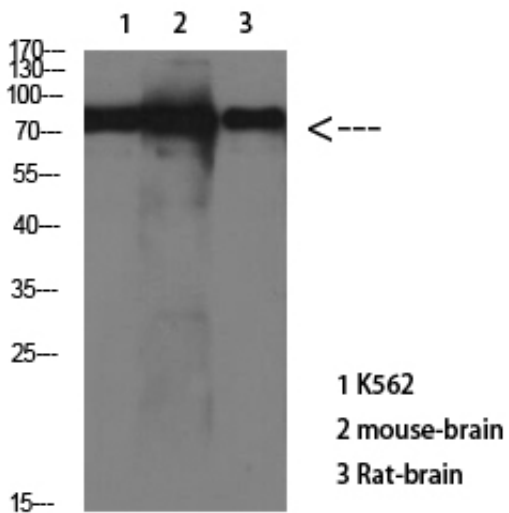
## Product Images



Immunohistochemical analysis of paraffin-embedded Rat Brain Tissue using Tau Mouse mAb diluted at 1:200



Immunohistochemical analysis of paraffin-embedded Human Brain Tissue using Tau Mouse mAb diluted at 1:200



Western Blot analysis of various cells using Antibody diluted at 1:1000



**专注二抗产品**

Biodragon旗下品牌

---