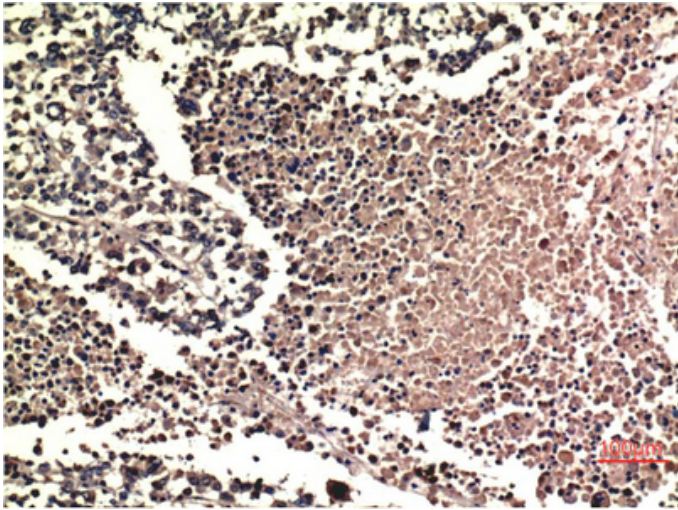




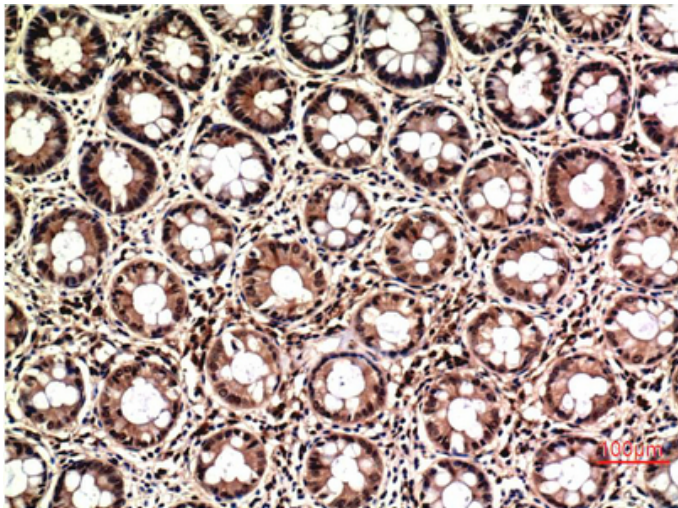
ERK1/2 mouse Monoclonal Antibody(1H4)

Catalog_no :	<u>AM3677</u>
Applications :	<u>WB,IHC-p</u>
Reactivity :	<u>Human,Rat,Mouse</u>
Category :	<u>抗原抗体</u>
Size :	<u>100µg/50µg</u>
Gene_name :	<u>MAPK1/MAPK3</u>
Protein_name :	<u>MAPK1/MAPK3</u>
Humangene_id :	<u>5594/5595</u>
Humanswissprot_no :	<u>P27361/P28482</u>
Immunogen :	<u>Synthetic Peptide of ERK1/2 at AA range of 140-220</u>
Specificity :	<u>ERK1/2 protein detects endogenous levels of MAPK1/MAPK3</u>
Formulation :	<u>Liquid in PBS containing 50% glycerol, 0.5% BSA and 0.02% sodium azide.</u>
Source :	<u>Mouse</u>
Dilution :	<u>WB 1:1000-2000, IHC 1:100-200</u>
Purification :	<u>The antibody was affinity-purified from mouse ascites by affinity-chromatography using specific immunogen.</u>
Concentration :	<u>1 mg/ml</u>
Storage_stability :	<u>-20°C/1 year</u>
Msds :	<u>MSDS_Antibody.pdf</u>
Other_name :	<u>MAPK1/MAPK3</u>
Molecular Weight :	<u>44KD,42KD</u>

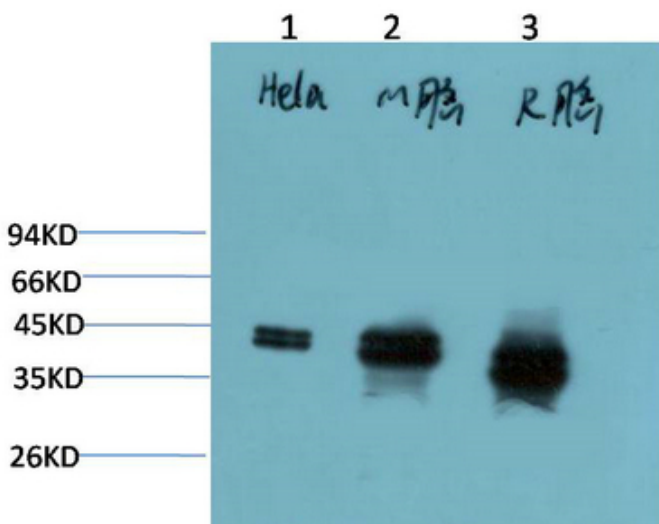
Product Images



Immunohistochemical analysis of paraffin-embedded Human Lung Carcinoma Tissue using ERK1/2 Mouse mAb diluted at 1:200.



Immunohistochemical analysis of paraffin-embedded Human Colon Carcinoma Tissue using ERK1/2 Mouse mAb diluted at 1:200.



Western blot analysis of 1) HeLa Cell Lysate, 2) Mouse Brain Tissue Lysate, 3) Rat Brain Tissue Lysate using ERK1/2 Mouse mAb diluted at 1:2000.