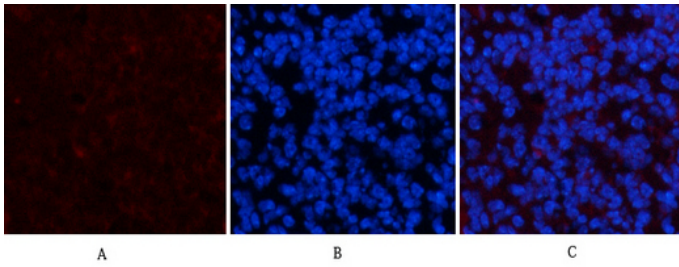




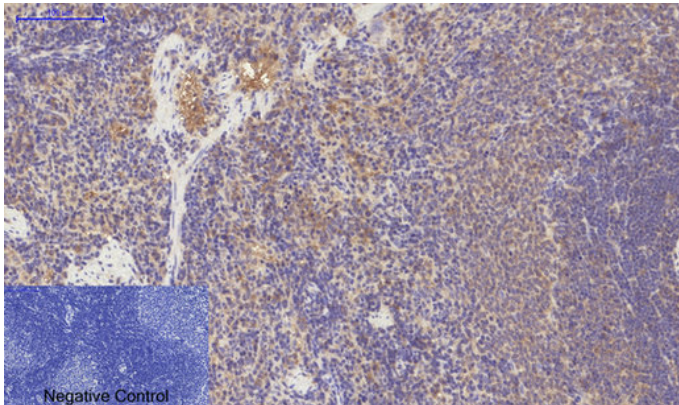
## PDGFR $\alpha$ mouse Monoclonal Antibody(7A3)

Catalog_no :	AM3687
Applications :	IF,IHC-p
Reactivity :	Human,Rat,Mouse
Category :	抗原抗体
Size :	100 $\mu$ g/50 $\mu$ g
Gene_name :	PDGFRA
Protein_name :	PDGFRA
Humangene_id :	<a href="#">5156</a>
Humanswissprot_no :	<a href="#">P16234</a>
Immunogen :	Synthetic Peptide of PDGFR $\alpha$ at AA range of 1010-1090
Specificity :	PDGFR $\alpha$ protein detects endogenous levels of PDGFRA
Formulation :	Liquid in PBS containing 50% glycerol, 0.5% BSA and 0.02% sodium azide.
Source :	Mouse
Dilution :	IF: 1:50-200 IHC 1:100-200
Purification :	The antibody was affinity-purified from mouse ascites by affinity-chromatography using specific immunogen.
Concentration :	1 mg/ml
Storage_stability :	-20°C/1 year
Msds :	<a href="#">MSDS_Antibody.pdf</a>
Other_name :	PDGFRA
Molecular Weight :	180KD

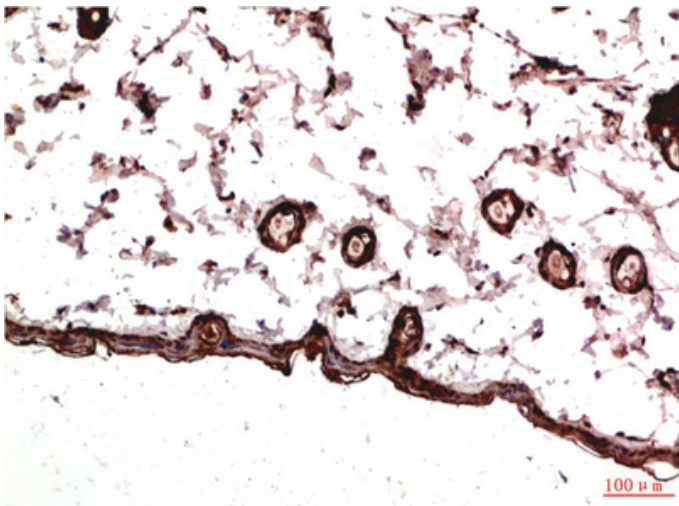
## Product Images



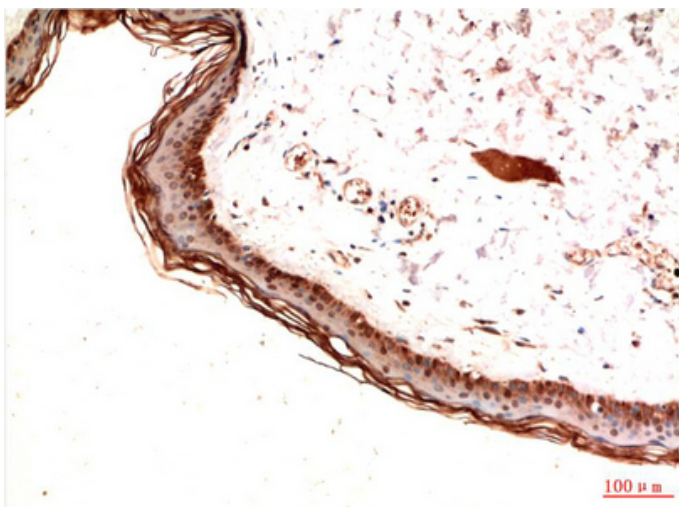
Immunofluorescence analysis of mouse-spleen tissue. 1, PDGFR $\alpha$  Mouse Monoclonal Antibody(7A3)(red) was diluted at 1:200(4°C, overnight). 2, Cy3 labeled Secondary antibody was diluted at 1:300(room temperature, 50min). 3, Picture B: DAPI(blue) 10min. Picture A: Target. Picture B: DAPI. Picture C: merge of A+B



Immunohistochemical analysis of paraffin-embedded Rat-spleen tissue. 1, PDGFR $\alpha$  Mouse Monoclonal Antibody(7A3) was diluted at 1:200(4°C, overnight). 2, Sodium citrate pH 6.0 was used for antibody retrieval(>98°C, 20min). 3, Secondary antibody was diluted at 1:200(room temperature, 30min). Negative control was used by secondary antibody only.



Immunohistochemical analysis of paraffin-embedded Rat Skin Tissue using PDGFR  $\alpha$  Mouse mAb diluted at 1:200.



Immunohistochemical analysis of paraffin-embedded Human Skin Tissue using PDGFR  $\alpha$  Mouse mAb diluted at 1:200.



**专注二抗产品**

Biodragon旗下品牌

---